

Champion® | TEAMWEAR





WHAT WE'RE MADE OF

Driven by your team's grit and resilience to be the best, Champion continues to evolve our athleticwear to take your team to the next level. From their strength as they perform to the strength of our gear, we know what it takes to outfit Champions. Now it's time to show what we're made of.



PRODUCT DURABILITY

Embodying the strength and grit of every athlete, our durable line of Champion athleticwear can handle every competition, wash, and season every time.



COMPETITIVE PRICE POINTS

Create your head-to-toe looks with our wide range of products and decoration capabilities designed for any budget.



INDUSTRY-LEADING SERVICE

When our experienced reps help you create your very own look, you'll know why our customer service has been rated one of the highest in the industry.

CONTENTS

PRACTICEWEAR	4	LACROSSE	138
OUTERWEAR	50	SOCCER	142
COACHES/FANWEAR	82	SOFTBALL	146
ACCESSORIES	92	TRACK AND FIELD	154
BASEBALL	104	VOLLEYBALL	164
BASKETBALL	112	WRESTLING	172
ESPORTS	122	ORDERING/DECORATION	174
FOOTBALL	130		

PRACTICE WEAR





 MORE OPTIONS AVAILABLE IN THE CANADIAN STOCK COLLECTION.



ACTIVE LUXE SHORT SLEEVE TEE

2653TU Adult: S-3XL
2653TL Ladies': XS-2XL
2653TY Youth: S-XL

- 95% Polyester/5% Spandex
- Ultra Soft With Superior Stretch • Odor-Resistant
- Crew Neck (Adult & Youth)
- Back Neck Tape
- Flatlock Seams
- Shoulder/Sleeve Inset Extends From Neckline To Sleeve Hem
- Moisture-Wicking
- V-Neck (Ladies')
- Side Split, Hi-Lo Hem

Colors: Red, Navy, Royal, White, Graphite, Black



ACTIVE LUXE LONG SLEEVE TEE

2654TU Adult: XS-3XL
2654TY Youth: S-XL

- 95% Polyester/5% Spandex
- Ultra Soft With Superior Stretch • Odor-Resistant
- Crew Neck
- Back Neck Tape
- Shoulder/Sleeve Inset Extends From Neckline To Sleeve Hem
- Moisture-Wicking
- Regular Fit
- Side Split, Hi-Lo Hem

Colors: Red, Navy, Royal, White, Graphite, Black





NEW DOUBLE DRY TANK

2658TU

Adult: S-3XL

2658TY

Youth: S-XL

- 100% Polyester
- Moisture-Wicking
- Anti-Odor Technology
- Crew Neck With Self Fabric Collar
- Sleeveless Design For Range Of Motion
- Fullback For Coverage

Colors: Black, Royal, White, Red, Steel Grey, Navy



DOUBLE DRY SHORT SLEEVE TEE

2657TU

Adult: S-5XL

2657TL

Ladies': XS-2XL

2657TY

Youth: S-XL

- 100% Polyester Knit
- Crew Neck (Adult & Youth)
- V-Neck (Ladies')
- Odor-Resistant
- Moisture-Wicking
- Set-In Sleeves (Adult & Youth)
- Raglan Sleeves (Ladies')

Colors: Maroon, Red, Forest, Navy, Royal, Purple, White, Steel Grey, Black



DOUBLE DRY LONG SLEEVE TEE

2656TU

Adult: S-3XL

2656TY

Youth: S-XL

- 100% Polyester Knit
- Odor-Resistant
- Imported
- Moisture-Wicking
- Set-In Sleeve

Colors: Black, Navy, Royal, Red, Purple, Forest, Maroon, White, Steel Grey



COTTON SHORT SLEEVE TEE

I5050TU

Adult: S-3XL

I5050TY

Youth: S-XL

- 5.2 oz 100% Cotton
- Taped Crew Neck
- Set-In Sleeve
- Tag-Free
- Imported

Adult Colors: Maroon, Scarlet, Orange, Gold, Dark Green, Navy, Royal Blue, Purple, White, Ash, Light Steel, Charcoal Heather, Black
Youth Colors: Maroon, Scarlet, Dark Green, Navy, Gold, White, Light Steel, Black



COTTON LONG SLEEVE TEE

I5047TU

Adult: S-2XL

I5047TY

Youth: S-XL

- 5.2 oz 100% Cotton
- Taped Crew Neck
- Set-In Sleeve
- Tag-Free
- Ribbed Cuffs
- Imported

Colors: Scarlet, Navy, Royal Blue, White(Y), Light Steel(Y), Black(Y)
(Y)=Youth



RAGLAN 3/4 SLEEVE JERSEY

I5049TU

Adult: S-3XL

- 100% Cotton
- Contrast Rib Collar And 3/4 Raglan Sleeves
- Locker Tag
- Curved Hem For Coverage

Colors: White/Maroon, White/Scarlet, White/Champion Gold, White/Dark Green, White/Navy, White/Black



POWER TANK

0351TL
0351TG

Ladies': XS-2XL
Girls': XS-L

- 100% Cotton Jersey Knit
- Racerback Design With Inverted Box Pleat At center Back
- Scoop Neck
- Pre-Shrunk
- Lightweight

Colors: Red, WOW Pink, Royal, Purple, White, Steel Grey, Black



POWER SHORT SLEEVE TEE

0352TL
0352TG

Ladies': XS-2XL
Girls': XS-L

- 100% Cotton Jersey Knit
- Lightweight
- Back Neck Tape To Eliminate Abrasion
- Set-In Sleeves
- Pre-Shrunk
- Classic Crew Neck

Colors: Red, WOW Pink, Royal, Purple, White, Steel Grey, Black



NEW POWER LONG SLEEVE HOODED CROPPED TEE

2660TL
2660TG

Ladies': XS-2XL
Girl's: XS-L

- 100% Cotton Jersey Knit
- Set-In Sleeve With Dropped Shoulder
- 2-Piece Hood With Round Tipped Drawstring (No Drawstring On Girls')
- Buttonhole At Center Front Hood
- Cropped Length Hits Right Below Natural Waist For A Flattering Fit
- "C" Logo Back Neck Tape For Added Comfort

Colors: Black, White, WOW Pink, Steel Grey



NEW POWER LONG SLEEVE HOODED TEE

2659TU
2659TY

Adult: S-3XL
Youth: S-XL

- 100% Cotton Jersey Knit
- Set-In Sleeve With Dropped Shoulder
- 2-Piece Hood With Round Tipped Drawstring (No Drawstring On Youth)
- Buttonhole At Center Front Hood
- "C" Logo Back Neck Tape For Added Comfort

Colors: Black, White, Steel Grey



NEW CONTOUR CROPPED TANK

0354TL

Ladies': XS-2XL

0354TG

Girl's: XS-L

- 85% Polyester/15% Spandex
- Moisture-Wicking Contour Fabric Wicks Sweat Away From The Body
- Cropped Length That Hits Right Above Natural Waist
- Next To Skin Fit With No Restrictions
- 2-Ply Fabric Front For Additional Coverage
- Wide Racerback Design Contours To The Body
- Tag-Free Back Neck Label Eliminates Irritation
- Clean Finished Seams At Neckline And Armholes (Front Body Only)

Colors: Black



ALLEGRO TANK

0349TL

Ladies': XS-2XL

0349TG

Girls': XXS-L

- 50% Polyester/50% Rayon
- Scoop Neck
- Keyhole Racerback Design For Airflow

Colors: WOW Pink, Blazing Yellow, White, Graphite, Navy, Black





ESSENTIAL RACERBACK TANK

0348TL Ladies': XS-2XL
0348TG Girls': XXS-L

- 50% Cotton/50% Polyester
- Scoop Neck
- Racerback Design

Colors: Red, Hot Coral, WOW Pink, Purple, Navy, Royal, Pale Blue, White, Steel Grey Heather, Black



MOMENTUM TANK

0353TL Ladies': XS-2XL
0353TG Girls': XS-L

- 88% Polyester/12% Spandex
- Higher Neckline For A Modern Look With Coverage
- Racerback For Range Of Motion
- 2-Ply, Contrasting Straps With a Clean Finish For Durable Strength
- Front Lined For Modesty And Comfort
- Imported

Colors: White/Black, Black/Purple, Black/Red, Black/Royal, Black/Gold





NEW CONTOUR V-NECK BRA TOP

1014TL Ladies': XS-2XL
1014TG Girl's: XS-L

- 85% Polyester/15% Spandex
- Moisture-Wicking Contour Fabric Wicks Sweat Away From Body
- V-Neck With Ruched Center Front Bust Detail
- 2-Ply Fabric Front For Additional Coverage
- 2" Encased Elastic Waistband For A Secure Fit
- Shoulder Seam Is Dropped Back For Added Comfort
- Double Criss-Cross Strappy Back For Added Detail
- Medium Support

Colors: Black



ESSENTIAL RACERBACK BRA TOP

1013TL Ladies': XS-2XL
1013TG Girls': S-L

- SpiritFlex™ 88% Polyester/12% Spandex
- Moisture-Wicking
- Racerback Design
- Encased Elastic Waistband For A Secure Fit
- No True Shoulder Seam For Added Comfort
- 2-Ply Front For Added Modesty
- Elastic Edging At Neck And Armholes For Easy On And Off
- Medium Support: Moderate Exercise
- Consider Sizing Down If You Are Looking For A Compression Fit

Colors: Red, Navy, Royal, Purple, WOW Pink, Black, White



COMPRESSION TANK

26I2TU Adult: S-3XL
26I2TL Ladies: XS-2XL
26I2TY Youth: S-L

- 92% Polyester/8% Spandex
- Crew Neck With Self Fabric Collar For A Comfortable Fit
- Flatlock Seams To Eliminate Chaffing
- Modified Racerback To Enable Full Range Of Motion
- Close To Body Fit For Comfort

Colors: Red, Navy, Royal, Black



SHORT SLEEVE COMPRESSION TEE

26I3TU Adult: S-3XL
26I3TY Youth: S-XL

- 92% Polyester/8% Spandex
- Moisture-Wicking
- Crew Neck With Self Fabric Collar For A Comfortable Fit
- Flatlock Seams To Eliminate Chaffing
- Classic Set-In Sleeve For Added Range Of Motion
- Back Neck Tape To Eliminate Abrasion
- Close To Body Fit For Comfort

Colors: Graphite, White, Navy, Black





HALF SLEEVE COMPRESSION TEE

2614TU Adult: S-3XL

2614TY Youth: S-XL

- 92% Polyester/8% Spandex
- Crew Neck With Self-Fabric Collar
- Flatlock Seams To Eliminate Chaffing
- Classic Set-In Sleeve For Added Range Of Motion
- Back Neck Tape To Eliminate Abrasion
- Close To Body Fit
- Moisture-Wicking

Colors: Navy, White, Graphite, Black



3/4 SLEEVE COMPRESSION TEE

2611TU Adult: S-3XL

2611TY Youth: S-XL

- 92% Polyester/8% Spandex
- Moisture-Wicking
- Crew Neck With Self Fabric Collar
- Flatlock Seams To Eliminate Chaffing
- Classic Set-In Sleeve For Added Range Of Motion
- Back Neck Tape To Eliminate Abrasion

Colors: White, Graphite, Navy, Black



LONG SLEEVE COMPRESSION TEE

2615TU Adult: S-3XL

2615TL Ladies': XS-2XL

2615TY Youth: S-XL

- 92% Polyester/8% Spandex
- Moisture-Wicking
- Crew Neck With Self Fabric Collar
- Flatlock Seams To Eliminate Chaffing
- Classic Set-In Sleeve For Added Range Of Motion
- Back Neck Tape To Eliminate Abrasion

Colors: Graphite, White, Navy, Black

IGNITE SHORT

8220BL

Ladies': XS-2XL

8220BG

Girls': XS-L

- Body: 100% Polyester
- Lining: 100% Polyester
- Side Panels: 50% Polyester/50% Rayon
- Inseam: Ladies' 3.5" | Girls' 2" (YXS), 2.25" (YS), 2.625" (YM), 2.875" (YL)
- Exposed Soft Elastic "C" Logo Waistband For A Comfortable, Adjustable Fit
- Moisture Wicking Liner For Comfort
- Binding Along Seam And Hem Edges For A Retro Look
- Engineered Side Panel To Allow For Non-Restrictive Movement

Colors: Red/ Heather Steel Grey, Navy/ Heather Steel Grey, Royal/ Heather Steel Grey, Black/Heather Steel Grey



MESH 5" SHORT

8218BL

Ladies': XS-2XL

8218BG

Girls': S-L

- Body: 100% Polyester
- Lining: 100% Polyester
- Inseam: Ladies' 5" | Girls' 3.5" (YS), 3.875" (YM), 4.125" (YL)
- Moisture-Wicking Lining For Comfort And Coverage
- Breathable Mesh For Ventilation
- Exposed Soft Elastic "C" Logo Waistband For A Comfortable, Adjustable Fit

Colors: Red, Navy, Royal, Black



MESH 7" SHORT

8212BL

Ladies': XS-2XL

8212BY

Youth: S-XL

- Body: 100% Polyester
- Lining: 100% Polyester
- Inseam: Ladies' 7" | Youth 7" (YS), 7.25" (YM), 7.5" (YL), 7.75" (YXL)
- Moisture Wicking Lining Wicks Sweat Away From Body
- Breathable Mesh Fabric For Ventilation
- Extended, Encased Elastic Waistband With Flat Interior Drawstring (No Drawstring On Youth)

Colors: Red, Navy, Royal, Black





MESH 9"POCKET SHORT

35337BU

Adult: S-3XL

- Body: 100% Polyester
- Inseam: 9"
- Side Pockets
- Full Athletic Fit
- Lining: 100% Polyester
- Multi-Needle Waistband
- Looped Drawcord

Colors: Black, Navy, Scarlet, Athletic Royal, Athletic Grey



MESH 9" SHORT

35338BU

Adult: S-3XL

- Body: 100% Polyester
- Inseam: 9"
- Looped Drawcord
- Lining: 100% Polyester
- Multi-Needle Waistband
- Full Athletic Fit

Colors: Black, Navy, Scarlet



DOUBLE DRY POCKET TRAINING SHORT

8219BU

Adult: S-3XL

8219BY

Youth: S-L

- 92% Polyester/8% Spandex
- Inseam: Adult 10" | Youth 8"
- Moisture-Wicking
- Exposed Soft Elastic "C" Logo Waistband With Flat Drawstring (No Drawstring On Youth)
- On-Seam Pockets
- Contrasting Side Insets
- One-Piece Gusset That Extends From Hem to Hem

Colors: Black/White, Navy/White, Royal/White, Red/White



CORE POCKET TRAINING SHORT

8214BU

Adult: S-3XL

8214BY

Youth: S-L

- 100% Polyester
- Moisture-Wicking, Odor-Resistant
- Inseam: Adult 10" | Youth 6.5" (YS), 7.5" (YM), 8.5" (YL)
- Encased Elastic Waistband With Drawstring For A Comfortable, Adjustable Fit (No Drawstring In Youth)
- On-Seam Pockets
- Side Vents For Ease And Range On Motion

Colors: Black, Steel Grey, Navy, Royal, Red



2-IN-1 ACTIVE SHORT

0517BL

Ladies': XS-2XL

0517BG

Girls': XXS-L

- Inner Short: 85% Polyester/15% Spandex
- Outer Short: Printed 97% Polyester/3% Spandex, Metallic 100% Polyester
- Inner Short Inseam: Ladies' 4" | Girls' 3" (YXXS, YXS), 3.5" (YS), 3.875" (YM), 4.125" (YL)
- Outer Short Inseam: Ladies' 2.5" | Girls' 1.625" (YXXS-YXS), 2.25" (YS), 2.625" (YM), 2.875" (YL)
- Outer Short With A Built-In Inner Short
- Side Pocket On Inner Short For Small Items
- Branded Exposed Elastic Waistband

Colors: Black, Pixie/Black, Frequency/Black, Instinct/Black



COTTON JERSEY 6" SHORT

35336BU

Adult: S-3XL

- 100% Ring Spun Cotton
- Inseam: 6"
- Exposed Elastic Waistband With Inside Drawstring
- Soft, Ring Spun Cotton
- Full Athletic Fit
- No Side Pockets

Colors: Black, Navy, Royal Blue, Oxford Grey



ESSENTIAL SHORT

82I5BL

Ladies': XS-2XL

82I5BG

Girls': XXS-L

- 50% Cotton/50% Polyester
- Inseam: Ladies' 3" | Girls' 1.75" (YXXS), 2" (YXS), 2.25" (YS), 2.5" (YM), 2.75" (YL)
- Exposed Soft Elastic "C" Logo Waistband For A Comfortable, Adjustable Fit
- Side Vents For Ease And Range Of Motion

Colors: Maroon, Red, Orange, Athletic Gold, Forest, Navy, Royal, Purple, Lilac, WOW Pink, Graphite, Black, White





CONTOUR SHORT

0519BL

Ladies': XS-2XL

0519BG

Girls': XS-L

- 85% Polyester/15% Elastane
- Inseam: Ladies' 3" | Girls' 2"
- Moisture-Wicking Contour Fabric Wicks Sweat Away From Body
- Mid-Rise, Contoured Comfort Waistband With Thin Elastic At Edge For A Supportive Fit
- Gusseted For Ease Of Movement
- No Exterior Side Seam, Leaves Plenty Of Opportunities For Embellishments

Colors: Black



NEW CONTOUR BIKE SHORT

0522BL

Ladies': XS-2XL

0522BG

Girls': XS-L

- 85% Polyester/15% Spandex
- Moisture-Wicking Contour Fabric Wicks Sweat Away From Body
- Mid-Rise, Contoured Comfort Waistband With Thin Elastic At Edge
- On-Seam Waistband Pocket Ensures a Safe Storage Space
- Waistband Height: Ladies' 2.75", Girl's 2"
- Gusseted For Ease Of Movement
- No Exterior Side Seams
- Inseam: Ladies' 8.5" | Girls' 5.25" (YXS), 6.25" (YS), 7.25" (YM), 7.75" (YL)

Colors: Black



CONTOUR CAPRI

0516BL

Ladies': XS-2XL

0516BG

Girls': XS-L

- 85% Polyester/15% Elastane
- Inseam: Ladies' 19.25" | Girls' 11.5" (YXS), 14" (YS), 15.75" (YM), 17.75" (YL)
- Moisture-Wicking Contour Fabric Wicks Sweat Away From Body
- Mid-Rise, Contoured Comfort Waistband With Thin Elastic At Edge For A Supportive Fit
- Gusseted For Ease Of Movement
- No Exterior Side Seam, Leaves Plenty Of Opportunities For Embellishments

Colors: Black



NEW CONTOUR MESH 7/8 LEGGING

0523BL

Ladies': XS-2XL

0523BG

Girls': XS-L

- Body: 85% Spandex/15% Spandex, Mesh: 91% Polyester/9% Spandex
- Inseam: Ladies' 25" | Girls' 10.5" (YXXS), 13.5" (YXS), 16.5" (YS), 19" (YM), 22.25" (YL)
- On-Seam Sided Pockets At Left And Right Hip
- Moisture-Wicking Contour Fabric Wicks Sweat Away From Body
- Mid-Rise, Contoured Comfort Waistband With Thin Elastic Edge
- Waistband Height: Ladies' 4", Girls' 3.25"
- Gusseted For Ease Of Movement
- No Exterior Side Seams

Colors: Black



CONTOUR LEGGING

0515BL Ladies': XS-2XL
0515BG Girls': XS-L

- 85% Polyester/15% Elastane
- Inseam: Ladies' 28" | Girls' 17.875" (YXS), 21" (YS), 23.5" (YM), 26.75" (YL)
- Moisture-Wicking Contour Fabric Wicks Sweat Away From Body
- Mid-Rise, Contoured Comfort Waistband With Thin Elastic At Edge For A Supportive Fit
- Gusseted For Ease Of Movement
- No Exterior Side Seam, Leaves Plenty Of Opportunities For Embellishments

Colors: Black, Navy



CONTOUR PANT

0518BL Ladies': XS-2XL
0518BG Girls': XS-L

- 85% Polyester/15% Elastane
- Inseam: Ladies' 32" | Girls' 22.875" (YXS), 26" (YS), 28.5" (YM), 31.75" (YL)
- Moisture-Wicking Contour Fabric Wicks Sweat Away From The Body
- Mid-Rise, Contoured Comfort Waistband With Thin Elastic At Edge For A Supportive Fit
- Gusseted For Ease Of Movement
- No Exterior Side Seam, Leaves Plenty Of Opportunities For Embellishments

Colors: Black, Navy



DOUBLE DRY 4" COMPRESSION SHORT

2002BL Ladies': XS-2XL
2002BG Girls': S-L

- Body: 88% Polyester/12% Spandex
- Liner: 100% Polyester
- Inseam: Ladies' 4" | Girls' 2.75" (YS), 3.125" (YM), 3.375" (YL)
- Moisture-Wicking
- Exposed Soft Elastic "C" Logo Waistband For A Comfortable, Adjustable Fit
- Gusset For Full Range Of Motion
- No Side Seams For Non-Restricted Movement

Colors: Royal, Maroon, Red, Forest, Navy, Purple, Black



DOUBLE DRY 5" COMPRESSION SHORT

I5034BL Ladies': XS-2XL

- Liner: 100% Polyester
- Body: 88% Polyester/12% Spandex
- Inseam: 5"
- Moisture-Wicking
- Exposed Soft Elastic "C" Logo Waistband For A Comfortable, Adjustable Fit
- Gusset For Full Range Of Motion
- No Side Seams For Non-Restricted Movement

Colors: Athletic Royal, Scarlet, Athletic Navy, Black



DOUBLE DRY 7" COMPRESSION SHORT

I5000BL Ladies': XS-2XL
I5000BY Youth: S-L
I5000BG Girls': S-L

- Liner: 100% Polyester
- Body: 88% Polyester/12% Spandex
- Inseam: Ladies' 7" (XS-XL), 7.25" (2XL) | Youth 6" (YS), 6.5" (YM), 7" (YL) | Girls' 3.625" (YS), 4" (YM), 4.25" (YL)
- Moisture-Wicking
- Encased Elastic Waistband For A Comfortable, Adjustable Fit
- One-Piece Gusset That Extends From Hem To Hem For Full Range Of Motion (Youth)
- Gusset For Full Range Of Motion (Ladies' And Girls')
- No Side Seams For Non-Restricted Movement

Colors: Royal, Scarlet, Navy, Black





DOUBLE DRY 9" COMPRESSION SHORT

I5057BU Adult: S-3XL

- Body: 88% Polyester/12% Spandex
- Liner: 100% Polyester
- Inseam: Adult 9"
- Moisture-Wicking
- Exposed Soft Elastic "C" Logo Waistband For A Comfortable, Adjustable Fit
- One-Piece Gusset That Extends From Hem To Hem For Full Range Of Motion
- No Side Seams For Non-Restricted Movement

Colors: Athletic Royal, Athletic Navy, Scarlet, Black



DOUBLE DRY 3" COMPRESSION SHORT

I5057BL Ladies': XS-2XL

- Body: 88% Polyester/12% Spandex
- Liner: 100% Polyester
- Inseam: Ladies' 3"
- Moisture-Wicking
- Exposed Soft Elastic "C" Logo Waistband For A Comfortable, Adjustable Fit
- Gusset For Full Range Of Motion
- No Side Seams For Non-Restricted Movement

Colors: Athletic Royal, Athletic Navy, Scarlet, Black, Maroon, Dark Green



NEW FLIGHT RUNNING TIGHT

052IBU Adult: S-3XL

052IBY Youth: S-XL

- 88% Polyester/12% Spandex
- Inseam: Adult 28" | Youth 19" (YS), 22" (YM), 25" (YL), 25.5" (YXL)
- Moisture-Wicking
- Exposed Soft Elastic "C" Logo Waistband With Flat Drawstring For A Comfortable, Adjustable Fit (No Drawstring In Youth)
- Contoured, Flatlock Seams To Eliminate Chaffing
- Gusset For Maximum Mobility
- Hidden Waistband Pocket To Securely Store Items

Adult Colors: Black, White

Youth Colors: Black





CHAMPION MADE TANK I

C180TL | Ladies': XS-3XL

C180TG | Girl's: XXS-L

- Body: SpiritFlex™ 88% Polyester/12% Spandex Knit
- Straps: Double Knit™ 100% Polyester
- Moisture-Wicking
- Dyed Fabric Main Body
- Overlapping Sublimated Braid Straps For Customization
- Higher Neckline For Coverage
- Clean Finished Neckline, Armholes, And Hem

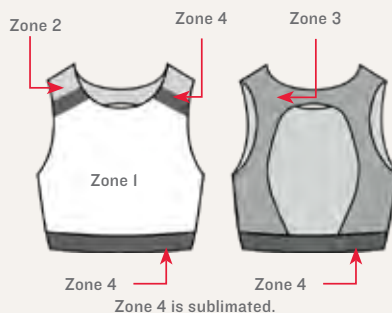
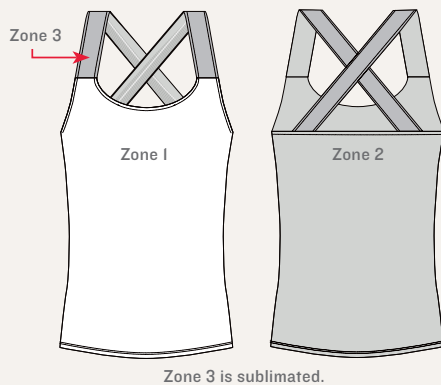


CHAMPION MADE BRA TOP I

C181TL | Ladies': XS-3XL

C181TG | Girl's: XXS-L

- Body: SpiritFlex™ 88% Polyester/12% Spandex Knit
- Lining: FlexForm™ 90% Polyester/10 Spandex
- Moisture-Wicking And Odor-Resistant Liner
- Dyed Fabric Main Body
- FlexForm™ Lined Front Panelling For Modesty
- Sublimated Braid Top Applied At The Collarbone And Set-On Around The Bottom Hem For Customization
- Back Keyhole For Ventilation And A Feminine Detail
- Encased Elastic At Bottom Hem For Adjustable Comfort And Support
- Clean Finished Neckline, Back Keyhole, And Armholes



1

CHOOSE YOUR TEAM LOOK IN YOUR TEAM COLORS

Customize your ultimate practice look.



2

CUSTOMIZE YOUR BRAID

Choose your braid by blending bold colors and patterns.



ASK ABOUT BRAIDS WITH A PATTERN!

\$5 upcharge per item for patterned braids.



CHAMPION MADE COMPRESSION SHORT I

3" • C001BL | Ladies': XS-3XL

3" • C001BG | Girl's: XXS-L

4" • C002BL | Ladies': XS-3XL

4" • C002BG | Girl's: XXS-L

5" • C003BU | Adult: S-4XL

5" • C003BL | Ladies': XS-3XL

5" • C003BY | Youth: XS-XL

5" • C003BG | Girl's: XXS-L

7" • C004BU | Adult: S-4XL

7" • C004BL | Ladies': XS-3XL

7" • C004BY | Youth: XS-XL

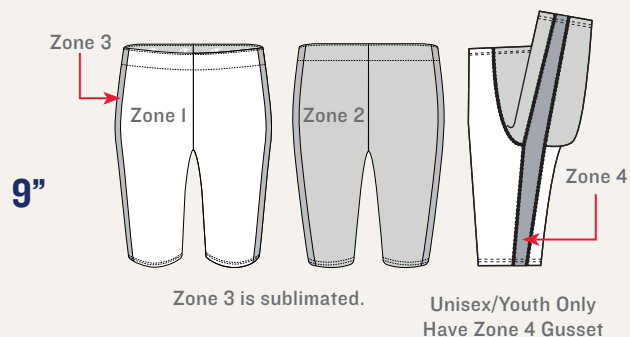
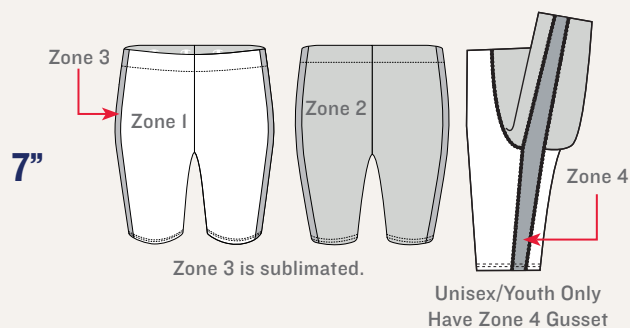
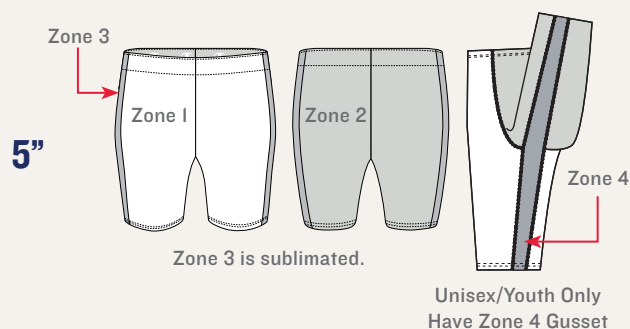
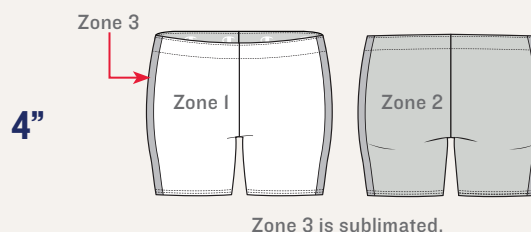
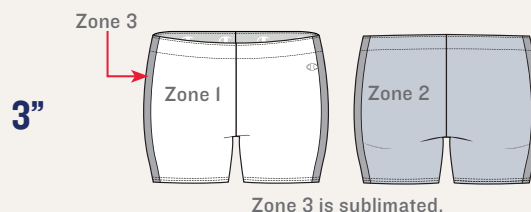
7" • C004BG | Girl's: XXS-L

9" • C005BU | Adult: S-4XL

9" • C005BL | Ladies': XS-3XL

9" • C005BY | Youth: XS-XL

- SpiritFlex™ 88% Polyester/12% Spandex
- 3" Inseam: Ladies' 3" | Girls' 2" (YXXS-YM), 2.5" (YL)
- 4" Inseam: Ladies' 4" | Girls' 2.25" (YXXS-YXS), 3.75" (YM), 4.25" (YL)
- 5" Inseam: Mens' 5" | Youth 3.5" (YXS), 4" (YS), 4.75" (YM), 5.5" (YL), 6.25" (YXL) | Ladies' 5" | Girls' 2.75" (YXXS-YXS), 4" (YS), 4.75" (YM), 5.25" (YL)
- 7" Inseam: Mens' 7" | Youth 5.5" (YXS), 6" (YS), 6.75" (YM), 7.5" (YL), 7.75" (YXL) | Ladies' 7" | Girls' 3.5" (YXXS), 4.75" (YXS), 6" (YS), 6.75" (YM), 7.25" (YL)
- 9" Inseam: Mens' 9" | Youth 6.5" (YXS), 7" (YS), 7.75" (YM), 8.5" (YL), 8.75" (YL) | Ladies' 9"
- Moisture-Wicking
- Dyed Fabric Main Body
- Contrasting Insets Down The Sides For Customization
- Exposed Interior "C" Logo Elastic Waistband For Adjustable Comfort
- Gusset To Enable Full Range Of Motion
- Flatlock Seams To Eliminate Chaffing

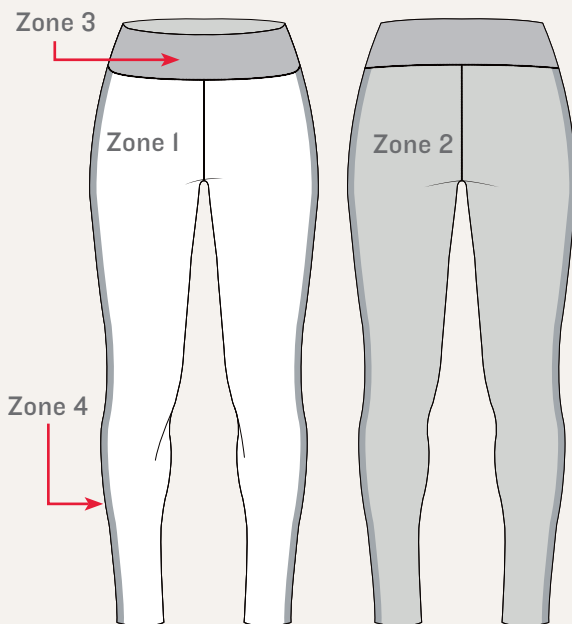


CHAMPION MADE LEGGING I

CI82BL | Ladies': XS-3XL

CI82BG | Girl's: XXS-L

- SpiritFlex™ 88% Polyester/12% Spandex Knit
- Inseam: Ladies' 28" | Girls' 12.5" (YXXS), 15.5" (YXS), 18.5" (YS), 21" (YM), 24.25" (YL)
- Moisture-Wicking
- Dyed Fabric Main Body
- Mid-Rise
- Sublimated Braid Down The Side Seam For Customization
- On-Seam Waistband Pocket For Storage Of Small Items
- Wide, Comfort Waistband With Thin Elastic At Waistband Edge For Extra Support
- Gusset To Enable Full Range Of Motion
- Flatlock Seams To Eliminate Chaffing



1

CHOOSE YOUR TEAM LOOK
IN YOUR TEAM COLORS

Customize your ultimate practice look.



WHITE



BLACK



STEEL GREY



PURPLE



MAROON



RED



ORANGE



NAVY



ROYAL



COL. BLUE



FOREST



KELLY



ATH. GOLD



VEGAS GOLD



CARDINAL

2

CUSTOMIZE YOUR BRAID

Choose your braid by blending bold colors and patterns.



Braid 1



Braid 2



Braid 3



Braid 4



Braid 5



Braid 6



Braid 7



Braid 8



Braid 9



Braid 10



Braid 11



Braid 12

ASK ABOUT BRAIDS WITH A PATTERN!

\$5 upcharge per item for patterned braids.





MIRAGE



CHISEL



CHAOS©



DIMENSION



EDGE©



CLASSICO©

UF PERFORMANCE SHORT SLEEVE TEE

U260TU

Adult: XS-4XL

U260TL

Ladies': XS-3XL

U260TY

Youth: S-XL

- 100% Polyester
- Short Sleeve Crew Neck Tee
- Moisture Wicking and Odor-Resistant



DIGITAL CAMO



CHAOS



CRUSHER©



FIERCE©



EDGE



WEB©

UF PERFORMANCE LONG SLEEVE TEE

U265TU

Adult: XS-4XL

U265TL

Ladies': XS-3XL

U265TY

Youth: S-XL

- 100% Polyester
- Long Sleeve Crew Neck Tee
- Moisture Wicking and Odor-Resistant



GOOD VIBES



RHYTHM



ALL-STAR

UF GAME DAY TANK

U252TL

Ladies': XS-2XL

U252TG

Girls': XS-L

- 100% Polyester
- Crossback Straps With A Danted Keyhole For A Feminine Detail
- Binded Neckline & Arm Holes To Keep Neckline & Straps For Durability
- Curved Hem For Coverage
- Side Vents On Hem For Comfortable Movement



HERITAGE



SOLID



BRIDGE

UF GAME DAY SHORT SLEEVE TEE

U251TU

Adult: S-3XL

U251TL

Ladies': XS-2XL

U251TY

Youth: S-XL

U251TG

Girls': XS-L

- 100% Polyester
- Classic Crew Neck With Self Fabricated Collar
- Dropped Shoulder With Set-In Sleeves For Range Of Motion (Ladies'/Girls')
- Raglan Sleeve That Doesn't Restrict Movement (Adult/Youth)
- Side Split For Ventilation



RETRO



WILDCARD



LATERAL

UF GAME DAY LONG SLEEVE TEE

U250TL

Ladies': XS-2XL

U250TG

Girls': XS-L

- 100% Polyester
- Classic Crew Neck With Self Fabricated Collar
- Dropped Shoulder With Set-In Sleeve For Range Of Motion
- Side Vents On Hem For Comfortable Movement



AGILE



AMPED



FLEX



JOLT



METHOD



ROWDY

UF LOOSE FITTING TANK

UI83TL

Ladies': XS-2XL

UI83TG

Girls': XXS-L

- 100% Polyester
- Moisture Wicking And Odor-Resistant Lining
- Scoop Neck
- Racerback Design For Added Range Of Motion
- Odor-Resistant



ALL-STAR



LIVE WIRE



MOTION



ODYSSEY



SUPERNOVA



TORQUE

UF SPIRITFLEX™ FULL BACK TANK

UI82TL

Ladies': XS-2XL

UI82TG

Girls': XXS-L

- Body: SpiritFlex™ 88% Polyester/12% Spandex
- Lining: 100% Polyester
- Moisture Wicking And Odor-Resistant Lining
- Scoop Neck
- Fullback
- Lined Front Bodice For Modesty



MYSTIC



RAPTURE



SPRINKLE



SWIFT



TORQUE



WHIPLASH

UF SPIRITFLEX™ RACERBACK TANK

UI80TL
UI80TG

Ladies': XS-2XL
Girls': XXS-L

- Body: SpiritFlex™ 88% Polyester/12% Spandex
- Lining: 100% Polyester
- Moisture Wicking And Odor-Resistant Lining
- Scoop Neck
- Lined Front Bodice For Modesty
- Racerback Design For Added Range Of Motion



CHEVRON



DOUBLE DOWN



DREAM



ENVY

UF SPIRITFLEX™ RACERBACK BRA

UI81TL
UI81TG

Ladies': XS-2XL
Girls': XXS-L

- SpiritFlex™ (88% Polyester/12% Spandex)
- Lining: 100% Polyester
- Moisture Wicking And Odor-Resistant Lining
- Scoop Neck
- Racerback Design For Added Range Of Motion
- Encased Elastic Waistband For A Secure Fit
- Lined Front Bodice For Modesty



JOLT



KALEIDOSCOPE



REWIND I



AFTERGLOW I



FRENZY I



SOLID



WATERCOLOR



FRENZY II

UF SPIRITFLEX™ LITE REVERSIBLE TANK

UI84TL

Ladies': XS-2XL

UI84TG

Girls': XXS-L

- SpiritFlex™ Lite (88% Polyester/12% Spandex)
- Scoop Neck With Binding At Neck And Armholes
- Racerback Design For Added Range Of Motion
- Completely Reversible For 2 Different Looks



AFTERGLOW I



AFTERGLOW II



FRENZY I



FRENZY II



WATERCOLOR I



WATERCOLOR II

UF SPIRITFLEX™ LITE REVERSIBLE BRA TOP

UI85TL

Ladies': XS-2XL

UI85TG

Girls': XXS-L

- SpiritFlex™ Lite (88% Polyester/12% Spandex)
- Scoop Neck With Binding At Neck And Armholes
- Racerback Design For Added Range Of Motion
- Encased Elastic Waistband For Secure Fit
- Completely Reversible For 2 Different Looks



AGILITY



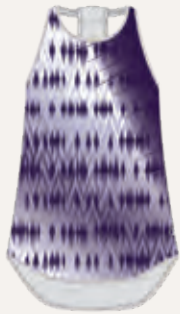
ALLURE



SCORPION



DIVIDE



LIVE WIRE



STRIPES

UF SINGLE-PLY REVERSIBLE TANK

UI94TL

Ladies': XS-2XL

UI94TG

Girls': XXS-L

- 100% Polyester
- Single-Ply Reversible For Two Different Looks
- Moisture-Wicking
- Scoop Neck
- Racerback Design For Added Range Of Motion
- Shirt Tail Hem
- Binding At Hem, Armholes, And Neckline



AGILITY



CHAOS



EDGE



FIERCE



NET



ODYSSEY

NEW UF PERFORMANCE TANK

UI75TU

Adult: S-4XL

UI75TY

Girls': S-XL

- 100% Polyester
- Moisture-Wicking
- Odor-Resistant
- Crew Neckline With Self Fabric Collar
- Sleeveless Design For Full Range Of Motion
- Fullback For Coverage



DOODLE



GEM



GLAMOUR



PIVOT



RINGER



SIDELINE

UF POWER NET MESH RACERBACK TANK

U277TL

Ladies': XS-3XL

U277TG

Girls': XXS-L

- Body: Power Net (92% Polyester/8% Spandex Mesh Knit)
- Set-In, Self Fabricated Collar And Binding Around Armholes
- Split Hem With Side Vents For Full Range Of Motion And Coverage
- Mesh Insets Around Arm And Back Shoulder For Ventilation
- Racerback For Non-Restricted Movement



FUSION



KICK TWIST



RINGER



SCRIPT TAPE



SIDELINE



STACK

UF POWER NET MESH FULL BACK TANK

UI98TL

Ladies': XS-3XL

UI98TG

Girls': XXS-L

- Body: Power Net (92% Polyester/8% Spandex Mesh Knit)
- Binding: SpiritFlex Lite (88% Polyester/12% Spandex)
- Classic Crew Neckline
- Binding On Neckline And Armholes For Durability
- Full Back Coverage
- Loose Fit For Non-Restrictive Movement

UF POWER NET MESH
CROPPED TEE

U276TL
U276TG

Ladies': XS-3XL
Girls': XXS-L

- Body: 100% Polyester
- Insets: Power Net Mesh (92% Polyester/8% Spandex)
- Cropped Hem Hits Above The Hips To Enable Non-Restricted Movement
- Mesh Insets Around Sleeve Hem And Back Neck Area For Ventilation
- Binding Around Neckline For Durability



DOODLE



TECHNICOLOR



SIDELINE

UF POWER NET MESH HOODED
CROPPED TEE

U715TL
U715TG

Ladies': XS-3XL
Girls': XXS-L

- Body: SpiritFlex Lite (88% Polyester/12% Spandex)
- Insets: Power Net Mesh (92% Polyester/8% Spandex)
- 3-Piece Hood With Drawstring (No Drawstring In Girls')
- Cropped, Hi-Lo Hem Hits Above The Hips To Enable Non-Restricted Movement
- Mesh Insets At Front Chest, Back, And Center Of Hood For Ventilation
- Dropped Shoulder And Short Sleeves



FUSION



GLAMOUR



RINGER

UF POWER NET MESH
RACERBACK BRA

U279TL
U279TG

Ladies': XS-3XL
Girls': XXS-L

- Body: SpiritFlex™ (88% Polyester/12% Spandex Knit)
- Insets: Powernet Mesh (92% Polyester/8% Spandex)
- Lining: Flexform (90% Polyester/10% Spandex)
- Lined Front Paneling For Modesty
- Moisture-Wicking And Odor-Resistant Lining
- Mesh Insets Around Collarbone And Back Neck
- Encased Elastic At Bottom Hem
- Racerback For Full Range Of Motion



PIVOT



SIDELINE



GEM



AMPED



GLAMOUR



SIDELINE



TEXTILE

UF SHIMMER TANK

UI77TL

Ladies': XS-3XL

UI77TG

Girls': XXS-L

- Body: SpiritFlex™ 88% Polyester/12% Spandex
- Shimmer Insets: 80% Polyester/20% Spandex
- Contrasting Shimmer Details For Some Fun Sparkle
- Moisture-Wicking Body
- Low-Cut Back For Ventilation
- Binding Along Scoop Front And Back Necklines and Armholes
- Reinforced Back Straps To Keep Garment Moving With You
- Forward Shoulder Seams To Keep Garment From Falling Back



SPRINKLE



SOLID



FUSION



SHATTER

UF SHIMMER BRA

UI76TL

Ladies': XS-3XL

UI76TG

Girls': XXS-L

- Body: SpiritFlex™ 88% Polyester/12% Spandex
- Shimmer Insets: 80% Polyester/20% Spandex
- Lining: Flexform (90% Polyester/10% Spandex)
- Contrasting Shimmer Details For Some Fun Sparkle
- Encased Elastic At Bottom Hem For Adjustable Comfort And Support
- Clean Finished Armholes And Back Panel
- Racerback For Full Range Of Motion
- Binding Along Scoop Neckline For Durability
- Reinforced Back Strap To Keep Garment Moving With You
- Shoulder Seam Is Slightly Set Back To Alleviate Pressure Off Shoulders
- FlexForm™ Lined Front Paneling For Modesty



BLITZ



CHAOS



CLASSICO



CONQUER



DIGITAL CAMO



EDGE

UF SLEEVELESS COMPRESSION TEE

U262TU Adult: XS-3XL
U262TY Youth: XS-XL

- 92% Polyester/8% Spandex
- Moisture-Wicking
- Crew Neck With Self Fabric Collar For A Comfortable Fit
- Sleeveless Design
- Flatlock Seam At Shoulder To Eliminate Chaffing
- Close To Body Fit For Comfort



EDGE



FORCE



REACTION



REIGN



RUSH



SOLID

UF 1/2 SLEEVE COMPRESSION TEE

U261TU Adult: XS-3XL
U261TY Youth: XS-XL

- 92% Polyester/8% Spandex
- Crew Neck With Self Fabric Collar For A Comfortable Fit
- Moisture-Wicking
- Flatlock Seams At Shoulder And Armhole To Eliminate Chaffing
- Classic Set-In Sleeve For Added Range Of Motion
- Close To Body Fit For Comfort



BRUSHSTROKE



DREAM



ENVY



FIERCE



LIVE WIRE



MOTION

UF SPIRITFLEX™ CAPRI

UI87BL

Ladies': XS-2XL

UI87BG

Girls': XXS-L

- SpiritFlex™ (88% Polyester/12% Spandex)
- Inseam: Ladies' 18" | Girls' 9" (YXXS), 10.75" (YXS), 12.5" (YS), 13.75" (YM), 15" (YL)
- Mid-Rise
- Moisture-Wicking
- Encased Elastic Waistband For A Comfortable, Adjustable Fit
- No Outseam/Sideseam



TECHNICOLOR



SWIFT



SPRINKLE



SPACE DYE



SALUTE



ROWDY

UF SPIRITFLEX™ CUFFED CAPRI

UI91BL

Ladies': XS-2XL

UI91BG

Girls': XXS-L

- SpiritFlex™ (88% Polyester/12% Spandex)
- Inseam: Ladies' 18" | Girls' 10.75" (YXXS), 12" (YXS), 13" (YS), 14.25" (YM), 15.5" (YL)
- Mid-Rise
- Contoured Comfort Waistband
- Moisture-Wicking
- Thin Elastic At Waistband Edge For Extra Support
- Self Fabric Cuffs
- No Sideseam



DREAM



MOTION



MYSTIC



NIGHTFALL



SOFT CAMO



SUPERNOVA

UF SPIRITFLEX™ LEGGING

UI88BL

Ladies': XS-2XL

UI88BG

Girls': XXS-L

- SpiritFlex™ (88% Polyester/12% Spandex)
- Inseam: Ladies' 28" | Girls' 15.5" (YXXS), 18.5" (YXS), 21" (YS), 24.5" (YM), 28" (YL)
- Mid-Rise
- Moisture-Wicking
- Encased Elastic Waistband For A Comfortable, Adjustable Fit
- No Outseam/Sideseam



SALUTE



MEMPHIS RETRO



LIMIT



KICK TWIST



JOLT



ICON

UF SPIRITFLEX™ CUFFED LEGGING

UI92BL

Ladies': XS-2XL

UI92BG

Girls': XXS-L

- SpiritFlex™ (88% Polyester/12% Spandex)
- Inseam: Ladies' 26.5" | Girls' 13" (YXXS), 16" (YXS), 18.5" (YS), 22" (YM), 25.5" (YL)
- Mid-Rise
- Moisture-Wicking
- Contoured Comfort Waistband
- Thin Elastic At Waistband Edge For Extra Support
- Self-Fabric Cuffs
- No Sideseam



DOODLE



GEM



GLAMOUR



INCLINE



PIVOT



RINGER



SIDELINE



SOLID



TECHNICOLOR

UF POWER NET MESH LEGGING

U278BL

Ladies': XS-3XL

U278BG

Girls': XXS-L

- Body: SpiritFlex™ (88% Polyester/12% Spandex)
- Insets: Power Net Mesh (92% Polyester/8% Spandex)
- Inseam: Ladies' 28" | Girls' 12.5" (YXXS), 15.5" (YXS), 18.5" (YS), 21" (YM), 24.5" (YL)
- Moisture-Wicking
- Mid-Rise
- Mesh Panel Inset At Side Ankle To Calf Area For Ventilation
- Wide, Comfort Waistband With Thin Elastic At Waistband Edge For Extra Support
- Gusset To Enable Full Range Of Motion
- Contoured Seams For A Flattering Silhouette
- Internal Waistband Pocket To Keep Items Secure



AMPED



FUSION



GLAMOUR



SHATTER



SIDELINE



SOLID

UF SHIMMER LEGGING

UI79BL Ladies': XS-3XL
UI79BG Girls': XXS-L

- Body: SpiritFlex™ 88% Polyester/12% Spandex
- Insets: 80% Polyester/20% Spandex
- Inseam: Ladies' 28" | Girls' 12.5"(YXXS), 15.5"(YXS), 18.5"(YS), 21"(YM), 24.25"(YL)
- Mid-Rise
- * Shimmer Side Insets And Waistband
- Wide, Comfort Waistband With Thin Elastic At Waistband Edge
- Gusset To Enable Full Range Of Motion
- Internal Waistband Pocket To Keep Items Securely Stored



ECLIPSE



EDGE



PRIME



SOAR



SPRINT



WIRED

UF TIGHT

U274BU Adult: S-3XL
U274BY Youth: S-L

- 88% Polyester/12% Spandex
- Inseam: Adult 27" | Youth 19.5"(YS), 23"(YM), 26.5"(YL)
- Branded Exposed Elastic Waistband
- Contoured Pouch Pocket
- No Outseam



ART DECO



CIRCUIT



GALAXY



GEO FUSION



LIMITLESS



MEMPHIS RETRO

UF SYNERGY SHORT

UI02BL

Ladies': XS-2XL

UI02BG

Girls': XXS-L

- 88% Polyester/12% Spandex
- Inseam: Ladies' 2.75" | Girls' 1.5"
- Encased Elastic Waistband For A Comfortable, Adjustable Fit
- No Side Seam
- Fully Lined For Modesty



AGILE



AMPED



BLOSSOM



ESCAPE



GEO FUSION



HARMONY

UF SPIRITFLEX™ HIGH WAIST SHORT

UI90BL

Ladies': XS-2XL

UI90BG

Girls': XXS-L

- 88% Polyester/12% Spandex
- Inseam: Ladies' 2.5" | Girls' 1.5"
- High-Rise, Hits At True Waist
- Thong Elastic At Waistband Edge For Extra Support
- No Outseam/Sideseam

UF 3" COMPRESSION SHORT

U204BL

Ladies': XS-2XL

U204BG

Girls': S-L

- 88% Polyester/12% Spandex
- Inseam: Ladies' 3" | Girls' 2.75" (YS), 3.125" (YM), 3.375" (YL)
- Encased Elastic Waistband For A Comfortable, Adjustable Fit
- Double-Needle Hemmed Bottom
- No Side Seam For Non-Restricted Movement



DOUBLE UP



LIBERO



PERIMETER

UF 4" COMPRESSION SHORT

U003BL

Ladies': XS-2XL

- 88% Polyester/12% Spandex
- Inseam: Ladies' 4"
- Moisture-Wicking
- Encased Elastic Waistband For A Comfortable, Adjustable Fit



ALIGN



ALLOY



ARRAY

UF COMPRESSION SHORT

U002BU

Adult: XS-3XL

U002BL

Ladies': XS-2XL

U002BY

Youth: S-XL

- 88% Polyester/12% Spandex
- Inseam: Mens' 9" | Ladies' 7.25" | Youth 6" (YS), 7.25" (YM), 8.5" (YL), 9" (YXL)
- Encased Elastic Waistband For A Comfortable, Adjustable Fit
- Moisture-Wicking



PRIME



MIRAGE



TORQUE



BREAK OUT



CHARISMA



FUSION



HIGH FLYER



METHOD



VAULT

UF SHIMMER BOY-CUT SHORT

UI03BL

Ladies': XS-3XL

UI03BG

Girls': XXS-L

- Body: 80% Polyester/20% Spandex
- Liner: 92% Polyester/8% Spandex
- Inseam: Ladies' 2.75" | Girls' 1.5"
- Encased Elastic Waistband For A Comfortable, Adjustable Fit
- No Side Seam
- Fully Lined For Modesty



AMPED



FUSION



GLAMOUR



SHATTER

UF SHIMMER INSET BOY-CUT SHORT

UI78BL

Ladies': XS-3XL

UI78BG

Girls': XXS-L

- Body: SpiritFlex™ 88% Polyester/12% Spandex
- Shimmer Insets & Waistband: 80% Polyester/20% Spandex
- Inseam: Ladies' 3" | Girls' 2" (YXXS-YM), 2.5" (YL)
- Mid-Rise
- Shimmer Side Insets And Waistband
- Wide, Comfort Waistband With Thin Elastic At Edge For Extra Support
- Gusset To Enable Full Range Of Motion
- Internal Waistband Pocket To Keep Item Securely Stored



SOLID



TEXTILE



OASIS



SWIFT

UF ECHO SHORT

UI93BL Ladies': XS-2XL
UI93BG Girls': XXS-L

- Body: 100% Polyester
- Waistband: 88% Polyester/12% Spandex
- Inseam: Ladies' 3" | Girls' 2.5"
- Inner Brief Liner
- Thin Elastic At Waistband Edge For Extra Support
- Interior Drawstring For Adjustable Fit
- Binding At Let Openings For Clean Finish



ELECTRA



REIGN

UF 5" SHORT

U270BL Ladies': XS-2XL
U270BG Girls': S-L

- 88% Polyester/12% Spandex
- Inseam: Ladies' 5" | Girls' 3.25" (YS), 4" (YM), 4.5" (YL)
- Encased Elastic Waistband With Interior Drawstring For a Comfortable, Adjustable Fit (No Drawstring In Girls')
- Side Panels



CHEVRON MOTIF



SOFT CAMO MOTIF

UF FREEDOM SHORT

UI89BL Ladies': XS-2XL
UI89BG Girls': XXS-L

- 100% Polyester
- Inseam: Ladies' 2.5" (XS-S), 2.75" (M-L), 3" (XL-2XL) | Girls' 2.5"
- Inner Brief Liner
- Mesh Side Panel Insets
- Encased Elastic Waistband With Drawstring For A Comfortable, Adjustable Fit



BURST



FRAGMENT

UF ACTIVE SHORT

UI25BL Ladies': XS-2XL
UI25BG Girls': XXS-L

- 100% Polyester
- Outer Short Inseam: Ladies' 2.5" | Girls' 1.75" (YXXS-YXS), 2.25" (YS), 2.625" (YM), 2.875" (YL)
- Inner Short Inseam: Ladies' 4" | Girls' 3" (YXXS-YXS), 3.5" (YS), 3.875" (YM), 4.125" (YL)
- Mid-Rise, 2-In-1 Short
- Side Pocket On Inner Short For Storage Of Small Items
- Branded Exposed Elastic Waistband



DOODLE



GEM



GLAMOUR



INCLINE



PIVOT



RINGER



SIDELINE



SOLID



TECHNICOLOR

UF POWER NET MESH 2-IN-1 SHORT

U275BL
U275BG

Ladies': XS-3XL
Girls': XXS-L

- Outer Short: 92% Polyester/8% Spandex
- Outer Short Inseam: Ladies' 3" | Girls' 1.25" (YXXS), 1.5" (YXS), 2" (YS), 2.375" (YM), 2.625" (YL)
- Inner Short Inseam: Ladies' 7" | Girls' 4.25" (YXXS), 4.5" (YXS), 5" (YS), 5.75" (YM), 6.25" (YL)
- Set-In Ruffled Outer Waistband
- Curved, Tulip Hem For Uninterrupted Movement
- Mid-Rise
- Gusset To Enable Full Range Of Motion
- Inner Short: 88% Polyester/12% Spandex
- Internal Waistband Pocket
- Facing On Hem For Clean Finished Look
- Wide, Comfort Waistband With Elastic At Edge
- No Side Seam To Create More Room For Placements



BALANCE



FLORAL SPLASH



SWEEP



TOP SPIN

UF PLEATED SHORT

UI95BL

Ladies': XS-2XL

UI95BG

Girls': XXS-L

- Body: 100% Polyester
- Inner Short: 85% Polyester/15% Spandex
- Interior Short Inseam: Ladies' 3" | Girls' 1.75" (YXXS), 2.25" (YXS), 2.75" (YS), 3.125" (YM), 3.375" (YL)
- Outer Short Inseam: Ladies' 3.75" | Girls' 2" (YXXS), 2.5" (YXS), 3" (YS), 3.375" (YM), 3.625" (YL)
- Mid-Rise
- 18 Box Pleats
- Inner Compression Shorts
- Inner Side Pocket For Storage Of Small Items
- Odor-Resistant



FIERCE



HERITAGE



TERMINATOR



POWER PLAY

UF 7" TRAINING SHORT

U272BU

Adult: XS-3XL

U272BY

Youth: S-XL



FACE OFF



WAVELENGTH

- Polyester Performance Fabric
- Inseam: Adult 7" | Youth 3.5" (YS), 4.5" (YM), 5.5" (YL), 6.5" (YXL)
- Encased Elastic Waistband With Flat Drawstring For A Comfortable, Adjustable Fit
- Side Vents
- Moisture-Wicking
- Odor-Resistant



DIGITAL CAMO



FIERCE



SOLID©



TERMINATOR



TORQUE

UF POCKET TRAINING SHORT

U269BU

Adult: XS-3XL

- 100% Polyester
- Inseam: 9"
- Encased Elastic Waistband With Flat Drawstring For A Comfortable, Adjustable Fit
- Side Vents
- Side Pockets
- Moisture-Wicking



DIGITAL CAMO



FIERCE



RIVAL



SHOCK



TORQUE



TERMINATOR

UF TRAINING SHORT

U268BU

Adult: XS-3XL

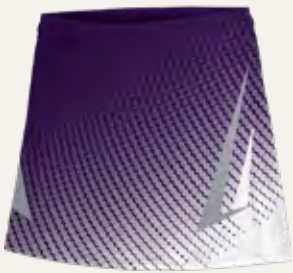
U268BL

Ladies': XS-2XL

U268BY

Youth: S-XL

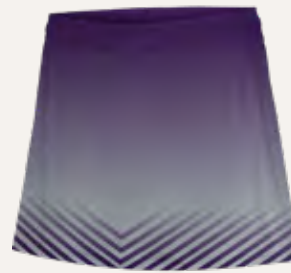
- 100% Polyester
- Inseam: Adult 9" | Ladies' 8" | Youth 6.375" (YS), 7.625" (YM), 8.875" (YL), 10.125" (YXL)
- Encased Elastic Waistband With Flat Drawstring For A Comfortable Fit
- Side Vents
- Moisture-Wicking



CHAOS



DIVERGE



ELECTRA



POWER PLAY

UF PERFORMANCE SKORT

U273BL

Ladies': XS-2XL

U273BG

Girl's: S-L



ROWDY



SOLID

- 88% Polyester/12% Spandex
- Interior Short: 88% Polyester/12% Spandex
- Inseam: Ladies' 4" | Girls' 3" (YS), 3.375" (YM), 3.625" (YL)
- Mid-Rise
- Encased Elastic Waistband With Interior Drawstring For A Comfortable, Adjustable Fit (No Drawstring In Girls')
- Inner Compression Short With Side Pocket
- Side Vents



CHAOS



SETUP



SOLID



TAKEDOWN

UF WOVEN SPORT SHORT

U600BU

Adult: S-3XL

U600BY

Youth: S-XL



TERMINATOR



TORQUE

- Body: 100% Polyester
- Side Panels: SpiritFlex™ (88% Polyester/12% Spandex)
- Inseam: Mens' 9" | Youth 5" (YS), 6" (YM), 7" (YL), 8" (YXL)
- Encased Elastic Waistband With Faux Fly For A Comfortable Fit
- Stretch Side Panels For Comfort

OUTERWEAR

 MORE OPTIONS AVAILABLE IN THE CANADIAN STOCK COLLECTION.



TRAILBLAZER WARM-UP

Jacket: 8010TU, Pant: 8010BU

Adult: S-3XL

Jacket: 8010TL, Pant: 8010BL

Ladies': XS-2XL

Jacket:

- 100% Polyester
- 3-Piece Drawcord Adjustable Hood With Cord Lock and Engineered Brim
- Set-In Sleeve With Adjustable Elastic Cuff
- On-Seam Zippered Welt Pockets For Secure Storage
- Storm Flap With Snap Covering Zipper
- Waterproof Fabric With Sealed Seams
- Contrasting Insets On Bodice And Sleeves
- Drop Tail With Cord Lock Adjustment At Hem For Added Coverage

Pant:

- 100% Polyester
- Inseam: Adult 32" | Ladies' 32"
- Encased Elastic Waistband With Flat Drawstring For A Comfortable, Adjustable Fit
- Zippered, Reverse Entry Welt Front And Back Pockets For Storage
- Waterproof Zipper With Cord Lock Adjustment At Leg Opening And Snap For Keeping The Elements Out
- Waterproof Fabric With Sealed Seams

Jacket Colors: Royal/White, Red/White, Purple/White, Black/White, Navy/White, Graphite/White

Pant Colors: Royal, Red, Purple, Black, Navy, Graphite



QUEST WARM-UP

Jacket: 35IITU, Pant: 35IIBU

Jacket: 35IITL, Pant: 35IIBL

Jacket: 35IITY, Pant: 35IIBY

Adult: S-5XL

Ladies': XS-2XL

Youth: XS-XL

Jacket:

- 100% Polyester
- Water-Resistant
- 3-Piece Drawcord Adjustable Hood With Cord Lock (No Drawcord In Youth)
- Adjustable Drawcord Hem With Cord Lock (No Drawcord In Youth)
- Set-In Sleeve With Encased Elastic Cuff
- Welt Pockets For Secure Storage
- Contrasting Insets At Shoulder And Sleeves For A Sporty Look
- Dropped Tail For Added Coverage

Pant:

- 100% Polyester
- Water-Resistant
- Inseam: Adult 32" | Ladies' 32" | Youth 18.875" (YXS), 22" (YS), 25.5" (YM), 29" (YL), 31" (YXL)
- Encased Elastic Waistband With Flat Drawstring For A Comfortable, Adjustable Fit
- On-Seam Pockets
- Ankle Zip For Easy On And Off
- Contrasting Insets On Outer Let For A Sporty Look

Colors: Royal/White, Red/White, Black/White, Maroon/White, Forest/White, Navy/White, Purple/White, Graphite/White



RUSH WARM-UP

Jacket: I7I4TU, Pant: I7I4BU

Jacket: I7I4TL, Pant: I7I4BL

Jacket: I7I4TY, Pant: I7I4BY

Adult: XS-3XL

Ladies': XS-2XL

Youth: XS-L

Jacket:

- 100% Polyester
- Water-Resistant
- 3-Panel Hood With A Flat Drawstring (No Drawstring In Youth)
- Contrasting Sleeve Flat Piping
- Back Neck Tape To Eliminate Abrasion
- Zippered Pockets For Secure Storage
- Encased Elastic Hem And Cuffs For An Adjustable Fit
- Back Yoke For Ventilation

Pant:

- 100% Polyester
- Water-Resistant
- Inseam: Adult 32" | Ladies' 32" | Youth 18.875" (YXS), 22" (YS), 25.5" (YM), 29" (YL)
- Encased Elastic Waistband With Flat Drawstring For A Comfortable, Adjustable Fit
- On-Seam Pockets
- Ankle Zip For Easy On And Off

Jacket Colors: Black/White, Royal/White, Navy/White, Red/White, Maroon/White, Forest/White, Purple/White

Pant Colors: Black, Royal, Navy, Red, Maroon, Forest, Purple





SOFTSHELL JACKET

I514TU

Adult: S-3XL

I514TL

Ladies': XS-2XL

- 100% Polyester
- Water And Wind Resistant
- 3-Piece Hood With Bungee Adjustment
- Interior Storm Flap With Zipper Garage
- Zippered Welt Hand Pockets With Media Friendly Headphones pass-through
- Interior Media Loop For Holding Heaphones In Place
- Reflective Sleeve Tape For Added Visablility
- Sleeve Pocket For Added Storage
- Tailored Fit

Colors: Black



ARCTIC DOWN JACKET

I553TU

Adult: S-3XL

- Shell: 100% Nylon
- Fill: 45% Grey Duck Down/55% Synthetic Duck Down Made From 100% Polyester
- Water-Resistant
- Self-Fabric Stand Collar
- Zipper Garage Top Of Collar
- Horizontal Quilting
- On-Seam Pockets For Storage
- Elastic Binding Around Hem And Sleeve Opening For An Adjustable Fit

Colors: Black



ACE WOVEN PULLOVER

I556TU

Adult: S-3XL

- 95% Polyester/5% Spandex
- Moisture-Wicking
- Classic Baseball Stand Collar
- Back Neck Tape To Eliminate Abrasion
- 1/4 Zipper With Bottom Zipper Garage
- Raglan Sleeve With Elastic Binding On Hem
- Pocket Bag With Welt Pocket Insets
- Zippered Side Vent To Adjust For Comfort
- Dropped Tail Hem For Extra Coverage

Colors: Royal, Navy, Red, Black



STADIUM JACKET

I554TU

Adult: XS-3XL

I554TY

Youth: S-L

- Body: 100% Polyester
- Lining: 100% Polyester Fleece
- 3-Piece Drawcord Adjustable Hood With Cord Lock (No Draw Cord In Youth)
- On-Seam Pockets For Storage
- Encased Elastic Cuffs
- Adjustable Drawcord Hem With Cord Lock (No Draw Cord In Youth)

Colors: Black, Navy, Royal, Red, Purple, Forest, Maroon, Graphite



LIGHTWEIGHT HOODED JACKET

I517TU

Adult: XS-3XL

I517TL

Ladies': XS-2XL

I517TY

Youth: S-L

- 100% Polyester
- Water-Resistant
- Self-Lined 3-Panel Hood With A Flat Drawstring (No Drawstring In Youth)
- On-Seam Pockets For Storage
- Dropped Hem For Coverage
- Encased Elastic Cuffs And Hem For Adjustable Fit

Colors: Black, Royal, Navy, Red



ESSENTIAL WATER-RESISTANT JACKET

I7I6TU

Adult: S-3XL

I7I6TY

Youth: S-XL

- 100% Polyester
- Water-Resistant
- Stand Collar
- Zipper Garage At Center Front To Eliminate Abrasion And Keep Zipper In Pace
- Set-In Sleeve With Elastic Sleeve Cuff For Versatility Of Wearer's Choice
- Dropped Back Hem For Added Coverage
- Forward Side Seam With On-Seam Pockets To Create Easy Access And Secure Storage

Colors: Royal, Navy, Red, Black, Forest, Maroon, Purple



AMBITION SHORT SLEEVE PULLOVER

I557TU

Adult: S-3XL

- 95% Polyester/5% Spandex
- Moisture-Wicking
- Classic Baseball Stand Collar For Non-Restrictive Movement
- Back Neck Tape To Eliminate Abrasion
- 1/4 Zipper With Bottom Zipper Garage For Tearing Prevention
- Raglan Sleeve With Elastic Binding On Hem To Keep Sleeves In Place
- Pocket Bag Welt Pocket Insets For Lots Of Storage
- Zippered Side Vent To Adjust For Comfort
- Dropped Tail Hem For Extra Coverage

Colors: Royal/Grey, Navy/Grey, Red/Grey, Black/Grey

PACE WARM-UP

Jacket

I5I5TU

Adult: S-5XL

I5I5TL

Ladies': XS-3XL

I5I5TY

Youth: S-L

Pant

I5I3BU

Adult: S-3XL

I5I3BL

Ladies': XS-2XL

I5I3BY

Youth: S-L

Pullover:

- 100% Polyester
- Stand Collar With Quarter Zip Front Lets You Adjust And Layer With Ease
- Zipper Garage At Top Of Collar
- Raglan Sleeve For Ease And Mobility

Pant:

- 92% Polyester/8% Spandex
- Inseam: Adult 30.5" (S-L), 31" (XS-2XL), 31.5" (3XL) | Ladies' 31.5" (XS-M), 32" (L), 32.5" (XS-2XL) | Youth 21" (YS), 24.5" (YM), 28" (YL)
- Exposed Soft Elastic "C" Logo Waistband With Flat Drawstring For A Comfortable, Adjustable Fit (No Drawstring In Youth)
- On-Seam Pockets
- Contoured, Flat Lock Seams To Eliminate Chaffing
- Ankle Zipper For Easy On And Off

Jacket Colors: Royal, Red, Black, Navy, Graphite Heather

Pant Colors: Black, Navy



NOVA WARM-UP

Jacket**I516TL**

Ladies': XS-2XL

I516TG

Girl's: XXS-L

Pant**I516BL**

Ladies': XS-2XL

I516BG

Girls': XXS-L

Jacket:

- 100% Polyester
- Raglan Sleeve For Added Range Of Motion
- Sleeve And Shoulder Insets With Piping For A Polished Look
- Welt Pockets For Easy Storage
- Self Fabric Stand Collar

Pant:

- 100% Polyester
- Inseam: Ladies' 32" | Girls' 15.875" (YXXS), 19" (YXS), 22.5" (YS), 26" (YM), 29.5" (YL)
- Encased Elastic Waistband With Drawstring For A Comfortable, Adjustable Fit (No Drawstring In Girls')
- Asymmetrical Leg Insets With Piping For A Polished Look
- On-Seam Pockets
- Ankle Zip For Easy On And Off

Colors: Royal/Black/White, Red/Black/White, Black/Wow Pink/White, Black/White/Steel Grey, Navy/White/Steel Grey



BREAK OUT WARM-UP

Jacket

I715TU	Adult: S-3XL
I715TL	Ladies': XS-2XL
I715TY	Youth: XS-L

Pant

I715BU	Adult: S-3XL
I715BL	Ladies': XS-2XL
I715BY	Youth: XS-L

Jacket:

- 100% Polyester
- Stand Ribbed Collar, Cuffs, And Bottom Hem
- Back Neck Tape To Eliminate Abrasion
- On-Seam Pockets For Storage
- Top Applied Contrasting Braid On Sleeves (No Braid On Black/Black Colorway)

Pant:

- 100% Polyester
- Inseam Adult 32" | Ladies' 32" | Youth 18.75" (YXS), 22" (YS), 25.5" (YM), 29" (YL)
- Exposed Soft Elastic "C" Logo Waistband With Flat Drawstring For A Comfortable, Adjustable Fit (No Drawstring On Youth)
- Welt Pockets For Secure Storage
- Top Applied Contrasting Braid (No Braid On Black/Black Colorway)
- Ankle Zip For Easy On And Off

Jacket Colors: Royal/Black/White, Red/Black/White, Black/White, Navy/Black/White, Graphite/Black/White, Forest/Black/White, Maroon/Black/White, Black/Black
Pant Colors: Black/White, Black/Black



DRIVE WARM-UP

Jacket

I717TU Adult: XS-3XL

I717TY Youth: S-XL

Pant

I717BU Adult: XS-3XL

I717BY Youth: S-XL

Jacket:

- 100% Polyester
- 2-Piece Hood With Drawstring For Adjustments (No Drawstring In Youth)
- Set-In Sleeves With Contrasting Insets For A Sleek Look To Match Back To Pant
- On-Seam Pockets For Easy Access And Secure Storage
- Slightly Curved, Dropped Back Hem For Added Coverage

Pant:

- 100% Polyester
- Inseam: Adult 32" | Youth 22" (YS), 25.125" (YM), 28.75" (YL), 29.5" (YXL)
- Exposed Soft Elastic "C" Logo Waistband With Flat Drawstring For A Comfortable, Adjustable Fit (No Drawstring In Youth)
- On-Seam Pockets For Easy Access And Secure Storage
- Contrasting Insets On Outer Leg Seam For A Sleek Look To Match Back To Jacket
- Tapered Leg With Ankle Zip To Adjust Fit And Easy On And Off

Colors: Royal/White, Navy/White, Red/White, Black/White





ACTIVE LUXE 1/4 ZIP PULLOVER

I555TU

Adult: S-3XL

I555TL

Ladies': XS-2XL

- 95% Polyester/5% Spandex
- Flatlock Seams To Eliminate Chaffing
- Classic Stand Collar
- Zipper Garage At Front Center
- Back Neck Tape To Eliminate Abrasion
- Side Split, Hi-Lo Hem For Ease Of Movement
- Moisture-Wicking And Odor-Resistant
- Shoulder/Sleeve Inset Extends From Neckline To Sleeve Hem, Eliminating Shoulder Seam

Colors: Navy, Black, White, Graphite



DAZZLER JACKET

I512TL

Ladies': XS-2XL

I512TG

Girls': XS-L

- Body: 86% Polyester/14% Spandex
- Raglan Sleeve Insets: 80% Nylon/20% Spandex
- Self-Fabric Stand Collar
- Raglan Sleeve For Added Range Of Motion
- On-Seam Pocket
- Hand Wash Only

Colors: Black/Hot Pink/White, Black/Royal/White, Black/Red/White, Black/Black/White, Black/Purple/White, Black/Silver/White



SURGE JOGGER

0514BU

Adult: S-3XL

0514BL

Ladies': XS-2XL

0514BY

Youth: S-L

- 100% Polyester
- Inseam: Adult 29" | Ladies' 28" | Youth 20" (YS), 23.5" (YM), 27" (YL)
- Relaxed Hip And Thigh
- Slim Fitted Ankle
- Front Slant Pockets
- Branded Exposed Elastic Waistband
- Self-Fabric Cuff

Colors: Black, Navy



COMING SOON CLASSIC JACKET

I719TU

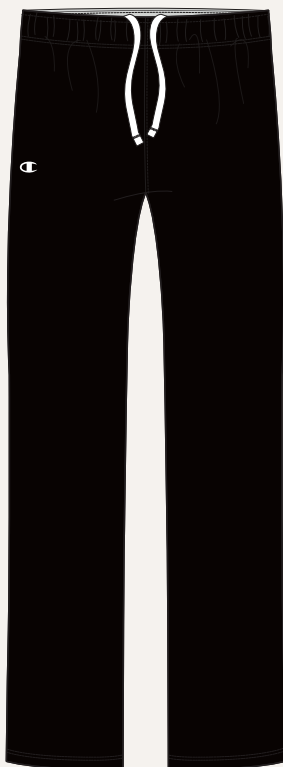
Adult: XS-2XL

I719TY

Youth: XS-L

- 100% Polyester
- Self-Fabric Stand Collar
- Set-In Sleeves For Ease And Mobility
- On-Seam Pockets For Easy Access and Secure Storage
- Exposed Center Front Zipper

Colors: Black, Navy



COMING SOON CLASSIC PANT

I719BU

Adult: XS-2XL

I719BY

Youth: XS-L

- 100% Polyester
- Mid-Rise
- Elastic Waistband With Interior Drawstring For An Adjustable Fit
- Straight Leg For A Tailored Fit
- Inseam: Adult 32" | Youth 18.875" (YXS), 22" (YS), 25.125" (YM), 28.75" (YL)

Colors: Black, Navy



CONTOUR JACKET

801ITL

Ladies': XS-2XL

801ITG

Girls': XS-L

- 4-Way Stretch Active (85% Polyester/15% Spandex)
- Moisture-Wicking Contour Fabric Wicks Sweat Away From Body
- Zipper Garage At Center Front To Eliminate Abrasion And Keep Zipper In Place
- Seamless Collar At Center Front For Clean Finish
- Raglan Sleeve That Doesn't Restrict Movement
- Princess Cut Seams On Body And Contoured Seams On Arms Provide A Flattering Shape
- Zippered Front Pockets To Keep Items Securely Stored
- Concealed Thumb Slits At Cuffs To Keep Sleeves Down And Hands Covered
- Curved, Dropped Back Hem For Added Coverage

Colors: Black, Navy





NEW CONTOUR FUSION FLEX JACKET

8012TL

Ladies': XS-2XL

8012TG

Girl's: XS-L

- Body: 85% Polyester/15% Spandex
- Cuffs/Bottom Band/Shoulder Insets: 95% Polyester/5% Spandex
- Moisture-Wicking Contour Fabric Wicks Sweat Away From Body
- Dropped Shoulder With Fusion Flex Fabric Overlay Insets
- Welt Pockets With Clean Finish
- Set-In, Elastic Encased Sleeve Cuffs and Bottom Hem
- Exposed Center Front Zipper
- Stand Collar With Interfacing For Durability
- Cropped Length That Hits Right Below Natural Waist

Colors: Black



COMING SOON FUSION FLEX WOVEN JOGGER

I558BL

Ladies': XS-2XL

I558BG

Girl's: XS-L

- 95% Polyester/5% Spandex
- Moisture-Wicking Fabric Wicks Sweat Away From Body
- Mid-Rise
- Elastic Waistband With Exterior Drawstring
- Front Slash Pockets For Easy Access And Secure Storage
- Tapered Leg For That Signature Jogger Look
- Elastic Binding At Let Opening
- Inseam: Ladies' 27" | Girls' 15" (YXS), 18" (YS), 20.75" (YM), 23.5" (YL)

Colors: Black





REVERSE WEAVE® HOODIE

I5011TU

Adult: S-3XL

- Body: 82% Cotton/18% Polyester
- Rib: 100% Cotton, Silver Gray: 80% Cotton/20% Polyester
- Oxford Gray: 78% Cotton/22% Polyester
- Heavyweight 12 Oz. Fleece With A Soft, Brushed Interior
- Reverse Weave Fleece Is Cut On The Cross-Grain To Resist Vertical Shrinkage
- Full Athletic Fit Allows Flexible Range Of Motion
- Sturdy Stretch Ribbed Cuffs And Waistband
- Roomy 2-Ply Hood With Knotted Drawcord And Metal Grommets Adjust For Custom Comfort
- Hand-Warming Kangaroo Pocket Is Bartacked For Durability
- Stretch Rib- Knit Side Panels Adds Ease And Flexibility

Colors: Black, Dark Green, Oxford Grey, White, Silver Grey, Scarlet, Navy, Athletic Royal



REVERSE WEAVE® CREW NECK SWEATSHIRT

I5003TU

Adult: S-3XL

- Body: 82% Cotton/18% Polyester
- Rib: 100% Cotton, Silver Gray: 80% Cotton/20% Polyester
- Oxford Gray: 78% Cotton/22% Polyester
- Heavyweight 12 Oz. Fleece With A Soft, Brushed Interior
- Reverse Weave Fleece Is Cut On The Cross-Grain To Resist Vertical Shrinkage
- Full Athletic Fit Allows Flexible Range Of Motion
- Sturdy Stretch Ribbed Crew Neck, Cuffs, And Waistband
- Stretch Rib-Knit Side Panels Adds Ease And Flexibility

Colors: Black, Silver, Maroon, Scarlet, Navy, Oxford Gray, Athletic Royal, Dark Green



REVERSE WEAVE® PANT

I5011BU

Adult: S-3XL

- Body: 82% Cotton/18% Polyester
- Rib: 100% Cotton
- Heavyweight 12 Oz. Fleece With A Soft, Brushed Interior
- Reverse Weave Fleece Is Cut On The Cross-Grain To Resist Vertical Shrinkage, So The Length Stays True To Size
- Full Athletic Fit Allows Flexible Range Of Motion
- Elastic Cuffs And Ribbed Waistband With Inner Drawcord
- Stretch Ribbed Gusset In The Crotch For Ease And Mobility
- Side Pockets For Plenty Of Storage

Colors: Black, Navy, Oxford Grey, Silver Grey



POWERBLEND® FLEECE HOODIE

15018TU Adult: S-3XL
15018TY Youth: S-XL

- Body: 9 Oz. 50% Cotton/50% Polyester
- Rib: 49% Cotton/49% Polyester/2% Spandex
- Soft Cotton/Polyester Blend Resists Shrinking And Pilling
- Midweight 9 Oz. Fleece With A Brushed Interior For Warmth
- Responsibly Made With Up To 10% Recycled Fibers
- Wider Ribbing Helps Cuffs And Waistband Stay Flat
- Longer Length For Better Coverage
- 2-Ply Hood With Drawcord
- Hand-Warming Front Kangaroo Pocket

Colors: Dark Green(Y), Black(Y), Navy(Y), Royal(Y), Purple, Maroon(Y), White, Orange, Charcoal Heather(Y), Gold, Scarlet(Y), Light Steel(Y), Azure(Y), Lilac(Y), WOW Pink(Y), Oatmeal Heather
 (Y) = Available In Youth



POWERBLEND® FLEECE CREW NECK SWEATSHIRT

15017TU Adult: S-3XL
15017TY Youth: S-XL

- Body: 9 Oz. 50% Cotton/50% Polyester
- Rib: 49% Cotton/49% Polyester/2% Spandex
- Soft Cotton/Polyester Blend Resists Shrinking And Pilling
- Midweight 9 Oz. Fleece With A Brushed Interior For Warmth
- Responsibly Made With Up To 10% Recycled Fibers
- Ribbing Helps Cuffs And Waistband Stay Flat
- Longer Length For Better Coverage

Colors: Black(Y), Charcoal Heather, Dark Green(Y), Light Steel(Y), Maroon(Y), Navy(Y), Purple, Royal(Y), Scarlet(Y)
 (Y) = Available In Youth

POWERBLEND® FLEECE CROPPED HOODIE

7000TL

Ladies': S-2XL

7000TG

Girls': S-L

- 50% Polyester/50% Spandex
- Exceptionally Soft Cotton/Polyester Blend Resists Shrinking And Pilling
- Midweight 9 Oz. Fleece With A Brushed Interior For Warmth Without Extra Bulk Or Weight
- Responsibly Made With Up To 10% Recycled Fibers
- Extra Stitch Details For Added Durability
- Wider Ribbing Helps Cuffs And Waistband Stay Flat
- Dated, One Piece Hood With Drawstring (No Drawstring On Girls')
- Length Hits Right Below Natural Waist
- Reinforced Raw Edge Hem To Keep From Unraveling

Colors: Black, Light Steel



POWERBLEND® FLEECE FULL-ZIP HOODIE

70038TU

Adult: S-3XL

70038TY

Youth: S-XL

- Body: 9 Oz, 50% Cotton/50% Polyester
- Rib: 49% Cotton/49% Polyester/2% Spandex
- Soft Cotton/Polyester Blend Resists Shrinking And Pilling
- Midweight 9 Oz. Fleece With A Brushed Interior For Warmth
- Responsibly Made With Up To 10% Recycled Fibers
- Wider Ribbing Helps Cuffs And Waistband Stay Flat
- Longer Length For Better Coverage
- 2-Ply Hood With Drawcord
- Hand-Warming Front Pouch Pockets

Colors: Black(Y), Charcoal Heather, Light Steel(Y), Navy(Y)

(Y) = Available In Youth



POWERBLEND® FLEECE 1/4 ZIP PULLOVER

70039TU

Adult: S-3XL

- Body: 9 Oz, 50% Cotton/50% Polyester
- Rib: 49% Cotton/49% Polyester/2% Spandex
- Soft Cotton/Polyester Blend Resists Shrinking And Pilling
- Midweight 9 Oz. Fleece With A Brushed Interior For Warmth
- Responsibly Made With Up To 10% Recycled Fibers
- Quarter Zip Front With Metal Zipper Pull
- Wider Ribbing Helps Cuff And Waistband Stay Flat
- Longer Length For Better Coverage
- Welt Pockets

Colors: Black, Light Steel, Navy



POWERBLEND® FLEECE JOGGER

70053BU Adult: S-2XL
70053BY Youth: S-XL

- Body: 9 Oz, 50% Cotton/50% Polyester
- Inseam: Adult 31" (S-L), 31.5" (XS-2XL) | Youth 20" (YS), 23.5" (YM), 27" (YL), 28" (YXL)
- Midweight 9 Oz. Cotton/Polyester Resists Shrinking And Pilling
- Brushed Interior For Warmth Without Extra Bulk
- Responsibly Made With Up To 10% Recycled Fibers
- Extra Stitch Details For Added Durability
- Elastic Waist With Inner Drawcord
- Tapered Leg With Ribbed Ankle Cuff
- Reinforced Onseam Side Pockets

Colors: Black(Y), Charcoal Heather, Light Steel(Y)
 (Y) = Available In Youth



POWERBLEND® FLEECE OPEN BOTTOM PANT

70038BU Adult: S-3XL
70038BY Youth: S-XL

- Body: 50% Cotton/50% Polyester
- Covered Elastic Waistband With Drawcord
- Side Pockets

Adult Colors: Black, Charcoal Heather, Light Steel, Navy, Royal, Scarlet, Purple
 Youth Colors: Black, Light Steel, Navy, Royal, Scarlet



NEW POWERBLEND® FLEECE 8" SHORT

7002BU Adult: S-3XL
7002BY Youth: S-XL

- Body: 50% Cotton/50% Polyester
- Inseam: Adult 8" | Youth 6" (YS), 6.75" (YM), 7.5" (YL), 8.25" (YXL)
- Encased Elastic Waistband With Flat Drawstring For Adjustable Comfort (Adult Only)
- On-Seam Pockets To Keep Your Items Secure

Colors: Light Steel, Black



NEW POWERBLEND® FLEECE 3" SHORT

7003BL Ladies': XS-2XL
7003BG Girls': S-L

- Body: 50% Cotton/50% Polyester
- Inseam: Ladies' 3" | Girls' 2.5" (YS), 2.75" (YM), 3" (YL)
- Encased Elastic Waistband With Flat Drawstring For Adjustable Comfort (Ladies' Only)
- On-Seam Pockets To Keep Your Items Secure
- Side Vents For Mobility

Colors: Light Steel, Black



POWERBLEND® ECO FLEECE PANT

15018BU

Adult: S-3XL

15018BY

Youth: S-XL

- 50% Cotton/50% Polyester
- Inseam: Adult 30.5" (S-L), 33" (XL), 33.5" (2XL), 34" (3XL) | Youth 22.25" (YS), 26" (YM), 29.25" (YL), 31.25" (YXL)
- Covered Elastic Waistband
- Elastic Cuff Leg Bottom

Colors: Light Steel(Y), Black(Y), Navy(Y), Charcoal Heather, Scarlet(Y), Royal(Y)
(Y)=Youth



NEW PRO-TECH PERFORMANCE FLEECE HOODIE

7001TU

Adult: S-3XL

7001TY

Youth: S-XL

- Pro-Tech Performance Fleece (100% Polyester)
- Moisture-Wicking And Odor-Resistant
- Full Athletic Fit With A Dropped Shoulders Allow Flexible Range Of Motion
- Double-Ply Dated Hood With Drawcord For Adjustability (No Dawcord On Youth)
- Hand-Warming Kangaroo Pocket With Bar Tacks For Durability
- Self-Fabric Cuff At Hem And Sleeve Hem For Adaptability To Keep In Place

Colors: Black, Navy, Steel Grey Heather

CHAMPION MADE RAGLAN JACKET 1

C701TU | Adult: S-5XL

C701TL | Ladies': XS-3XL

C701TY | Youth: XS-XL

CHAMPION MADE RAGLAN JACKET 2

C702TU | Adult: S-5XL

C702TL | Ladies': XS-3XL

C702TY | Youth: XS-XL

CHAMPION MADE RAGLAN JACKET 3

C703TU | Adult: S-5XL

C703TL | Ladies': XS-3XL

C703TY | Youth: XS-XL

- Body & Pocket Bags: 100% Polyester Knit
- Insets: Double Knit(100% Polyester) (Jacket 1 & 2)
- Stand Collar For A Classic Look
- Raglan Sleeve That Doesn't Restrict Movement
- Cuffed Sleeve Hems To Keep Sleeve In Place
- Zippered, On Seam Front Pockets To Keep Items Securely Stored
- Classic Straight Hem
- Top Applied Braid At Waist For Customization(Jacket 1)
- Contrasting Insets On Sleeves For Customization(Jacket 2)
- Contrasting Insets On Main Body Front For Customization(Jacket 3)

CHAMPION MADE RAGLAN JACKET 4

C710TL | Ladies': XS-3XL

C710TG | Girl's: XXS-L

- Body & Pocket Bags: 100% Polyester Knit
- Insets: Double Knit(100% Polyester)
- Stand Collar For A Classic Look
- Raglan Sleeve That Doesn't Restrict Movement
- Cuffed Sleeve Hems To Keep Sleeve In Place
- Zippered, On Seam Front Pockets To Keep Items Securely Stored
- Princess Cut Seams On Body To Provide A Flattering Shape
- Contrasting Insets on Body and Sleeves



Raglan Jacket 1
Zone 6 is sublimated.



Raglan Jacket 2
Zone 6 is sublimated.



Raglan Jacket 3
Zone 6 is sublimated.



Raglan Jacket 4



1

**CHOOSE YOUR TEAM LOOK
IN YOUR TEAM COLORS**

Customize your ultimate warm-up.



WHITE



BLACK



STEEL GREY



PURPLE



MAROON



LIME



RED



ORANGE



NAVY



ROYAL



COL. BLUE



TURQUOISE



FOREST



KELLY



ATH. GOLD



VEGAS GOLD



WOW PINK



METALLIC
SILVER

2

CUSTOMIZE YOUR BRAID

Choose your braid by blending bold colors
and patterns.



Braid 1



Braid 2



Braid 3



Braid 4



Braid 5



Braid 6



Braid 7



Braid 8



Braid 9



Braid 10



Braid 11



Braid 12

ASK ABOUT BRAIDS WITH A PATTERN!

\$5 upcharge per item for patterned braids.



CHAMPION MADE PANT 1

Short • C705BU | Adult: S-5XL
Short • C705BL | Ladies': XS-3XL
Short • C705BY | Youth: XS-XL
Regular • C704BU | Adult: S-5XL
Regular • C704BL | Ladies': XS-3XL
Regular • C704BY | Youth: XS-XL
Long • C706BU | Adult: S-5XL
Long • C706BL | Ladies': XS-3XL
Long • C706BY | Youth: XS-XL

- Body & Pocket Bags: 100% Polyester Knit
- Insets: Double Knit (100% Polyester)
- Short Inseam: Adult 30" | Ladies' 30" | Youth 16.875" (YXS), 20" (YS), 23.125" (YM), 26.75" (YL), 27.5" (YXL)
- Regular Inseam: Adult 32" | Ladies' 32" | Youth 18.875" (YXS), 22" (YS), 25.125" (YM), 28.75" (YL), 29.5" (YXL)
- Long Inseam: Adult 34" | Ladies' 34" | Youth 20.875" (YXS), 24" (YS), 27.125" (YM), 30.75" (YL), 31.5" (YXL)
- Interior C-Logo Elastic Waistband with Flat Drawstring for comfortable adjustment (No Drawstring on Youth)
- Exposed C-Logo Elastic Waistband can be folded over to show the C's right side up for a fun hit of branding
- On-Seam Pockets
- Contrasting Insets down the sides for customization
- Straight Leg w/ concealed Ankle Zip to adjust fit and easy-on, easy-off wear

CHAMPION MADE PANT 2

Short • C711BL | Ladies': XS-3XL
Short • C711BG | Girl's: XXS-L
Regular • C712BL | Ladies': XS-3XL
Regular • C712BG | Girl's: XXS-L
Long • C713BL | Ladies': XS-3XL
Long • C713BG | Girl's: XXS-L

- Short Inseam: Ladies' 30" | Girls' 14" (YXXS), 17" (YXS), 20" (YS), 22.5" (YM), 25.75" (YL)
- Regular Inseam: Ladies' 32" | Girls' 16" (YXXS), 19" (YXS), 22" (YS), 24.5" (YM), 27.75" (YL)
- Long Inseam: Ladies' 34" | Girls' 18" (YXXS), 21" (YXS), 24" (YS), 26.5" (YM), 29.75" (YL)
- Interior C-Logo Elastic Waistband with Flat Drawstring for comfortable adjustment (No Drawstring on Girls)
- Exposed C-Logo Elastic Waistband can be folded over to show the C's right side up for a fun hit of branding
- On-Seam Pockets
- Contrasting Insets down the sides for customization
- Straight Leg w/ concealed Ankle Zip to adjust fit and easy-on, easy-off wear

CHAMPION MADE JOGGER 1

Short • C707BU | Adult: S-5XL
Short • C707BL | Ladies': XS-3XL
Short • C707BY | Youth: XS-XL
Regular • C708BU | Adult: S-5XL
Regular • C708BL | Ladies': XS-3XL
Regular • C708BY | Youth: XS-XL
Long • C709BU | Adult: S-5XL
Long • C709BL | Ladies': XS-3XL
Long • C709BY | Youth: XS-XL

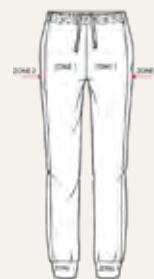
- Short Inseam: Adult 26" | Ladies' 25.5" | Youth 13.875" (YXS), 17" (YS), 20.125" (YM), 23.75" (YL), 24.5" (YXL)
- Regular Inseam: Adult 28" | Ladies' 27.5" | Youth 15.875" (YXS), 19" (YS), 22.125" (YM), 25.75" (YL), 26.5" (YXL)
- Long Inseam: Adult 30" | Ladies' 29.5" | Youth 17.875" (YXS), 21" (YS), 24.125" (YM), 27.75" (YL), 28.5" (YXL)
- Interior C-Logo Elastic Waistband with Flat Drawstring for comfortable adjustment (No Drawstring on Youth)
- Exposed C-Logo Elastic Waistband can be folded over to show the C's right side up for a fun hit of branding
- On-Seam Pockets
- Contrasting Insets down the sides for customization
- Tapered, Cuffed leg w/ concealed Ankle Zip to adjust fit and easy-on, easy-off wear
- Self-fabricated Cuff at pant hem for adjust ability and to keep leg in place



Pant 1
Zone 2 is sublimated.



Pant 2
Zone 2 is sublimated.



Jogger 1
Zone 2 is sublimated.



1

CHOOSE YOUR TEAM LOOK IN YOUR TEAM COLORS

Customize your ultimate warm-up.



WHITE



BLACK



STEEL GREY



PURPLE



MAROON



LIME



RED



ORANGE



NAVY



ROYAL



COL. BLUE



TURQUOISE



FOREST



KELLY



ATH. GOLD



VEGAS GOLD



WOW PINK



METALLIC
SILVER

2

CUSTOMIZE YOUR BRAID

Choose your braid by blending bold colors and patterns.



Braid 1



Braid 2



Braid 3



Braid 4



Braid 5



Braid 6



Braid 7



Braid 8



Braid 9



Braid 10



Braid 11



Braid 12

ASK ABOUT BRAIDS WITH A PATTERN!

\$5 upcharge per item for patterned braids.





FORMULA



GLIDE

UF 1/2 ZIP PULLOVER

U267TU

Adult: XS-3XL

U267TL

Ladies': XS-2XL

- 1/2 Zip: Brushed SpiritFlex™ (85% Polyester/15% Spandex)
- Stand Collar With 1/2 Zip Front
- Raglan Sleeve For Ease Of Mobility
- Clean-Finished Hem And Sleeves
- Lightly Brushed Back For Softness



ALLOY



TORQUE

UF LIGHTWEIGHT 1/2 ZIP PULLOVER

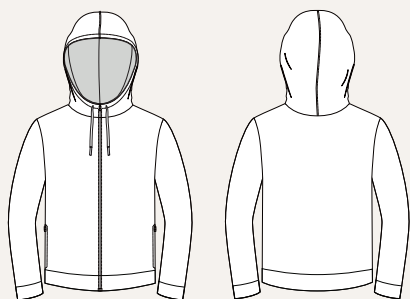
U704TU

Adult: XS-3XL

U704TL

Ladies': XS-2XL

- Lightweight 1/2 Zip: 100% Polyester
- Stand Collar With 1/2 Zip Front
- Raglan Sleeve For Ease Of Mobility



COMING SOON UF HOODED WARM-UP JACKET

U720TU

Adult: XS-5XL

U720TL

Ladies': XS-3XL

U720TY

Youth: S-XL

U720TG

Girls': XXS-L

- Brushed SpiritFlex™ (85% Polyester/15% Spandex)
- Set-In Sleeves For Ease And Mobility
- Front Kissing Welt Covered Zipper
- Self Fabric Cuff And Bottom Hem
- 2-Piece Hood With Tipped Drawstring (No Drawstring On Youth/Girl's)
- On-Seam Zippered Pockets For Secured Storage



LEVEL UP



VALOR

UF TEAR AWAY PANT

UI97BU

Adult: XS-4XL

UI97BL

Ladies': XS-2XL

UI97BY

Youth: S-XL

- Brushed SpiritFlex™ (85% Polyester/15% Spandex)
- Inseam: Adult 32" (S-3XL), 33" (4XL) | Ladies' 32" | Youth 22" (YS), 25.5" (YM), 29" (YL), 31" (YXL)
- Encased Elastic Waistband For A Comfortable, Adjustable Fit
- Snap Details At Waist For Adjustability
- Full Tear Away Through The Waistband



ALLOY



CROSS FADE

UF WARM-UP JACKET

U701TU Adult: XS-4XL
U701TY Youth: S-XL

- Brushed SpiritFlex™ (85% Polyester/15% Spandex)
- Self-Fabric Stand Collar
- Side Panel Designed For A Flattering Fit (Ladies' & Girls')
- Set-In Sleeve (Ladies' & Girls')
- Zippered On Seam Pockets With Heaphone Port In Right Pocket



FLARE



CHAOS

UF WARM-UP JACKET

U702TL Ladies': XS-2XL
U702TG Girls': XXS-L

- Brushed SpiritFlex™ (85% Polyester/15% Spandex)
- Self-Fabric Stand Collar
- Zippered On Seam Pockets With Heaphone Port In Right Pocket
- Raglan Sleeve For Added Range Of Motion (Adult & Youth)



CHAOS



DIMENSION

UF WARM-UP PANT

U701BU Adult: XS-4XL
U701BY Youth: S-XL

- Brushed SpiritFlex™ (85% Polyester/15% Spandex)
- Inseam: Adult 31" (XS), 32" (S-XL), 33" (2XL-4XL) | Youth 22.5" (YS), 26" (YM), 29.5" (YL), 30.25" (YXL)
- Encased Elastic Waistband With Flat Drawstring For A Comfortable, Adjustable Fit
- On Seam Pockets For Easy Access And Secure Storage
- Ankle Zip To Adjust Fit And Easy On And Off



ROWDY



SMASH HIT

UF WARM-UP PANT

U702BL Ladies': XS-2XL
U702BG Girls': XXS-L

- Brushed SpiritFlex™ (85% Polyester/15% Spandex)
- Inseam: Ladies' 32" | Girls' 17.5" (YXXS), 20.5" (YXS), 23" (YS), 26.5" (YM), 30" (YL)
- Encased Elastic Waistband For A Comfortable, Adjustable Fit
- Ankle Zip To Adjust Fit And Easy On And Off
- Side Panel Design For A Flattering Fit
- Slim Fit Through Waist, Hip And Thigh
- Mini-Bootcut Leg



MOTIVATE



CHAOS

UF WATER-RESISTANT POPOVER

U706TU Adult: XS-3XL
U706TL Ladies': XS-2XL
U706TY Youth: S-XL

- 100% Water-Resistant Polyester
- Exposed 1/2 Zip
- Self-Lined 3-Panel Hood With Drawcord For Adjustable Coverage
- Kangaroo Pocket For Secure Storage
- Hidden Zipper Pocket Under Waist Flap For Extra Storage
- Set In Sleeve With Elastic Cuff
- Encased Elastic At Hem
- Non-Lined, Lightweight Design



BASELINE



RELOAD

UF WATER-RESISTANT ANORAK

U714TU Adult: S-3XL
U714TL Ladies': XS-2XL
U714TY Youth: S-XL

- 100% Water-Resistant Polyester
- Exposed 1/2 Zip
- 2-Piece Lined Hood With Drawstring (No Drawstring On Youth)
- Kangaroo Pocket For Added Secure Storage
- Hidden Zipper Pocket Under Waist Flap For Extra Storage
- Set-In Sleeve With Elastic Cuff For Adjustability
- Concealed Side Zipper On Wearer's Right



VOYAGE



AMPED

UF WATER-RESISTANT FULL-ZIP JACKET

U703TU Adult: S-4XL
U703TL Ladies': XS-2XL
U703TY Youth: S-XL

- 100% Water-Resistant Polyester
- Exposed Full-Zip Closure
- Self-Lined 3-Panel Hood With Drawcord (No Drawcord In Youth)
- On-Seam Pockets For Easy Access And Storage
- Dropped Back Hem Enhances Coverage
- Elastic Cuffs And Hem



PRISM



RIVAL

UF WATER-RESISTANT PANT

U703BU Adult: S-4XL
U703BL Ladies': XS-2XL
U703BY Youth: S-XL

- 100% Polyester
- Inseam: Adult 32" | Ladies' 32" | Youth 22.5" (YS), 25" (YM), 28.25" (YL), 30.25" (YXL)
- Moisture-Wicking And Odor-Resistant
- Encased Elastic Waistband With Flat Drawstring
- Relaxed, Straight Leg
- On Seam Side Pockets For Easy Access And Secure Storage
- Ankle Zip To Adjust Fit And Easy On And Off



CHARISMA



FUSION



GLAMOUR



JIVE



SHATTER



SOLID

UF SHIMMER WARM-UP JACKET

U7I9TL

Ladies': XS-3XL

U7I9TG

Girl's: XXS-L

- Body: Brushed SpiritFlex™ (85% Polyester/15% Spandex)
- Insets: 80% Nylon/20% Spandex
- Self-Fabric Stand Collar With Clean Finished Seams
- Exposed Center Front Zipper Garage To Eliminate Abrasion And Keep Zipper In Place
- 3" Shimmer Fabric Insets On Sleeves For Added Design Feature
- Zippered On-Seam Pockets To Keep Items Securely Stored
- Raglan Sleeve For Added Range Of Motion



FUSION



SHATTER



CHARISMA



GLAMOUR



JIVE



SOLID

UF SHIMMER WARM-UP PANT

U7I9BL

Ladies': XS-3XL

U7I9BG

Girl's: XXS-L

- Body: Brushed SpiritFlex™ (85% Polyester/15% Spandex)
- Side Panels: 80% Nylon/20% Spandex
- Extended Encased Elastic Waistband With Drawstrings For A Comfortable, Adjustable Fit (No Drawstrings On Girls')
- On Seam Pockets For Storage
- 3" Shimmer Fabric Insets At Sides Eliminating A Traditional Side Seam
- Concealed Ankle Zipper For Easy On And Off
- Inseam: Ladies' 32" | Girls' 16" (XXS), 19" (XS), 22" (S), 24.5" (M), 27.75" (L)



ROWDY



BEACON



MACH5

UF PERFORMANCE HOODIE

U266TU

Adult: XS-5XL

U266TY

Youth: S-XL

- Pro-Tech Performance Fleece (100% Polyester)
- Hand-Warming Kangaroo Pocket
- Self Fabric Cuff At Hem And Sleeve
- Headphone Port In Pocket
- Lined Hood
- Moisture-Wicking And Odor-Resistant

NEW UF PRO-TECH PERFORMANCE FLEECE HOODIE

U716TU

Adult: XS-5XL

U716TY

Youth: XS-XL

- Pro-Tech Performance Fleece (100% Polyester)
- Moisture-Wicking
- Odor-Resistant
- Full Athletic Fit With A Dropped Shoulder Allows Flexible Range Of Motion
- Double-Ply Darted Hood With Drawstring For Adjustability (Adult Only)
- On-Seam Pockets
- Self-Fabric Cuffs And Bottom Band

COMING SOON UF PRO-TECH PERFORMANCE FLEECE CREW NECK

U721TU

Adult: XS-5XL

U721TY

Youth: XS-XL

- Pro-tech Performance Fleece (100% Polyester)
- Moisture-Wicking Fabric Wicks Sweat Away From Body
- Odor-Resistant Finish
- Full Athletic Fit With A Dropped Shoulder Allows Flexible Range Of Motion
- Self Fabric Color, Cuffs And Bottom Band



DOUBLE DOWN



TORQUE



FIERCE



GLAMOUR



RINGER



SIDELINE



SOLID



STACK



FUSION

UF POWER NET MESH JOGGER

UI99BL Ladies': XS-3XL
UI99BG Girl's: XXS-L

- Main Body: 100% Polyester
- Mesh Insets: Power Net (92% Polyester, 8% Spandex Mesh Knit)
- Inseam: Ladies' 28.25" | Girl's 12.75" (YXXS), 15.75" (YXS), 18.75" (YS), 21.25" (YM), 24.5" (YL)
- Moisture-Wicking And Odor-Resistant
- Elastic Waistband With Flat Drawstring For Adjustment (Ladies' Only)
- Side Panels With Mesh Insets For Targeted Ventilation
- Tapped Leg With Elastic Cuff For Secure Fit Around The Ankle And Adjustable Length



CHAOS



CROSS FADE



ECLIPSE



FIERCE



HERITAGE



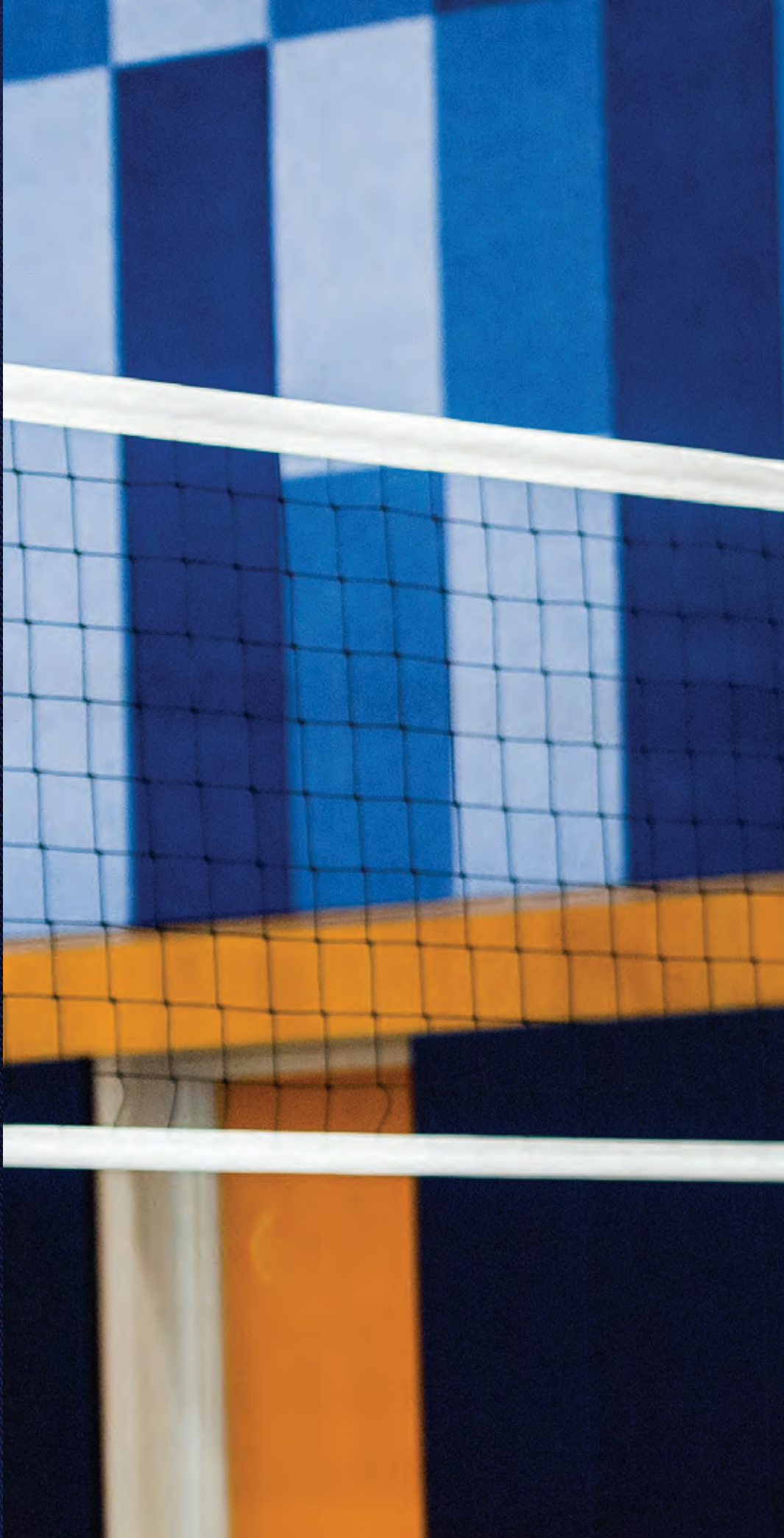
STRIVE

UF JOGGER

UI96BU Men's: XS-4XL
UI96BL Ladies': XS-2XL
UI96BY Youth: S-XL

- Brushed SpiritFlex™ (85% Polyester/15% Spandex)
- Inseam: Adult 29" | Ladies' 28" | Youth 20" (YS), 23.125" (YM), 26.75" (YL), 27.5" (YXL)
- Relaxed Hip And Thigh, Slim Fitted Ankle
- Branded Exposed Elastic Waistband
- Self-Fabric Cuff
- On-Seam Pockets

COACHES & FANWEAR







ESSENTIAL POLO

2397TU

Adult: S-4XL

2397TL

Ladies': XS-2XL

2397TY

Youth: XS-L

- 95% Polyester/5% Spandex
- Classic 3 Button Placket
- Back Neck Tape To Eliminate Abrasion
- Self-Fabric Collar
- Side Vents At Hem

Colors: Maroon, Red, Forest, Navy, Royal, Purple, White, Graphite, Black



LIMITED STOCK VOLT POLO

2398TU

Adult: S-3XL

2398TL

Ladies': XS-2XL

- 100% Polyester
- Classic 3 Button Placket
- Back Neck Tape
- Odor-Resistant
- Contrasting Insets At Shoulders And Sides
- Self-Fabric Collar
- Side Vents At Hem
- Moisture-Wicking

Colors: Red/White, Navy/White, Royal/White, Purple/White, White/Black, Black/White



ACTIVE LUXE POLO

2399TU

Adult: S-3XL

- Active Luxe (95% Polyester/5% Spandex)
- Self-Fabric Collar
- Moisture-Wicking And Odor-Resistant
- Classic 3 Button Placket
- Back Neck Tape To Eliminate Abrasion
- Side Split, Hi-Lo Hem For Ease Of Movement While Staying Covered
- Shoulder/Sleeve Inset Extends From Neckling To Sleeve Hem, Eliminating The Shoulder Seam And Enabling Full Range Of Motion

Colors: Navy, White, Graphite, Black





HYBRID SHORT

8221BU

Men's: S-3XL

- 100% Polyester
- Inseam: 9.75"
- Hidden, Zippered Pocket On Wearer's Left Side Seam For Phone Storage And Pocket Bag Acts As A Screen Cleaner
- Exposed "C" Logo Interior Elastic Waistband For Comfort On Body
- Front Slash Pockets
- Moisture-Wicking
- Back Yoke For Flattering Fit And Ease Of Movement
- Back Welt Pockets With Button Closure
- Designed For Comfortable Wear All Day For Any Activity
- Clean Finished Belt Loops To Keep Belt In Place
- Center Front Zipper And Button Closure

Colors: Black, Khaki



SHORT SLEEVE FAN JERSEY

0350TL

Ladies': XS-2XL

0350TG

Girl's: XS-L

- 100% Polyester
- Crossover V-Neck Collar
- Set-In Sleeves With Contrasting Sleeve Stripes
- Back Neck Tape To Eliminate Abrasion

Colors: Black/White, Navy/White, Royal/White, Red/White, Purple/White, White/Black, WOW! Pink/White



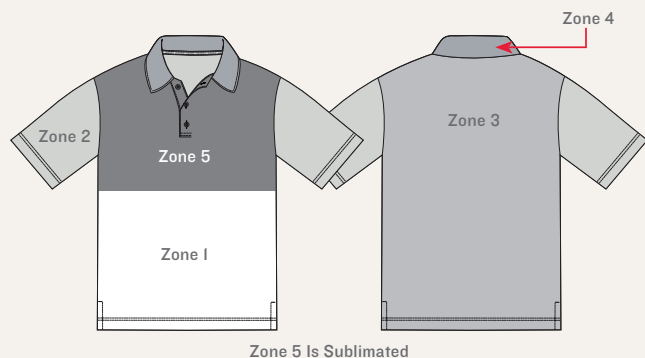
CHAMPION MADE POLO 1

CI83TU | Adult: S-5XL

CI83TL | Ladies': XS-3XL

CI83TY | Youth: XS-XL

- 100% Polyester
- Odor-Resistant
- Classic 3-Button Placket
- Back Neck Tape To Eliminate Abrasion
- Self-Fabricated Collar
- Set-In Sleeve
- Side Hem Vents For Full Range Of Motion



CHOOSE YOUR TEAM LOOK IN YOUR TEAM COLORS

Customize your ultimate look.



WHITE



BLACK



MAROON



FOREST



RED



PURPLE



NAVY



ROYAL

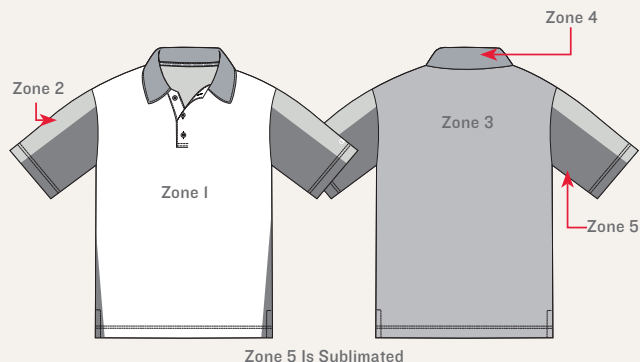
CHAMPION MADE POLO 2

CI84TU | Adult: S-5XL

CI84TL | Ladies': XS-3XL

CI84TY | Youth: XS-XL

- 100% Polyester
- Odor-Resistant
- Dyed Fabric Main Body, With Customizable Sleeve And Body Insets
- Classic 3-Button Placket
- Back Neck Tape To Eliminate Abrasion
- Self-Fabricated Collar
- Set-In Sleeve
- Side Hem Vents For Full Range Of Motion



FINISH IT OFF WITH DECORATION

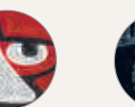
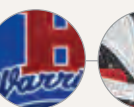
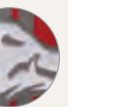
Make It Personal®. Customize your art to match your team's personality.



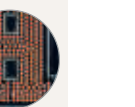
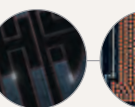
Twill



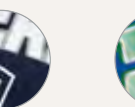
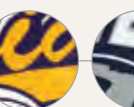
Embroidery



Twill with Rhinestones



Rhinestones



Heat Transfer



Sublimation



AMPED



CHAOS©



ECLIPSE©



GEO CALIBER



HI-RES STRIPE



VANTAGE

UF POLO

U230TU

U230TL

U230TY

Adult: S-6XL

Ladies': XS-3XL

Youth: S-XL

- 100% Polyester
- Set-In Sleeve
- Self Fabric Collar
- Imported

- Moisture-Wicking
- 3-Button Placket
- Side Vents



DRIVER



EAGLE



PAR



ROWDY

UF SLEEVELESS POLO

U231TL

U231TG

Ladies': XS-3XL

Girls': XS-L

- 100% Polyester
- Side Hem Vents For Full Range Of Motion
- Retro Johnny Collar - Clean Finished, Bartacked At The V-Notch To Keep It In Place
- Modified Racerback For Non-Restrictive Movement And To Conceal Traditional Bra Straps
- Imported



SLICE



STRIPES



CHAOS



FIERCE



HIBISCUS GARDEN



ISLAND BREEZE



JUNGLE PALMS



SOLID



SPARE

COMING SOON **UF** RESORT SHORT SLEEVE TEE

UI74TU

Adult: XS-5XL

UI74TY

Youth: XS-XL

- 100% Polyester
- Anti-Odor Technology Captures Odor-Causing Bacteria
- Full-Button Placket With Clear Buttons
- Short Sleeve, With Dropped Shoulder And Back Yoke For A Relaxed Fit
- Resort 2-Ply Collar With Clean Finished Edges
- Single Chest Patch Pocket
- Straight Hem With Vented Sides For Added Mobility



AFTERGLOW



HERITAGE



KALEIDOSCOPE



LINE-UP



PLAYOFF



REIGN

UF FAN JERSEY

UI86TU

Adult: S-3XL

UI86TL

Ladies': XS-2XL

UI86TY

Youth: S-L

UI86TG

Girl's: XXS-L

- Body: 100% Polyester Mini-Mesh
- Collar: SpiritFlex™ (88% Polyester/12% Spandex)
- One Piece Yoke, No Shoulder Seams
- Short Sleeve



ATTACK



BREAKAWAY



CONTENDER



SOLID



BLOCKER

UF HOCKEY FAN JERSEY

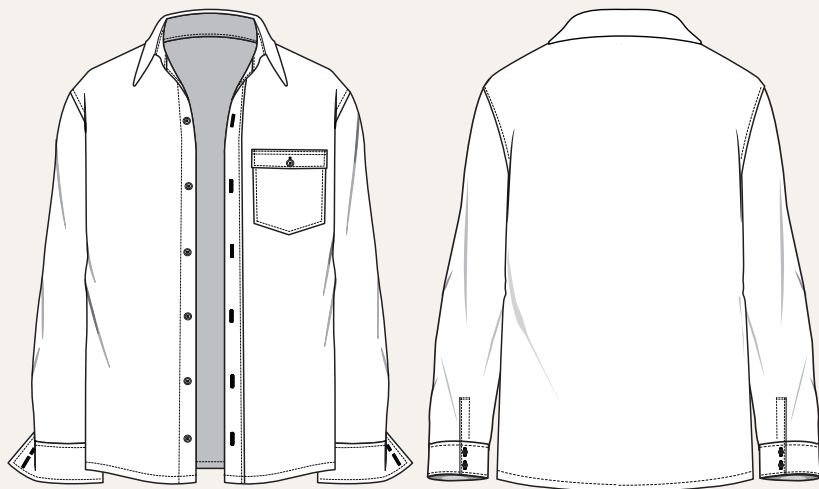
U440TU

Adult: XS-3XL

U440TY

Youth: S-XL

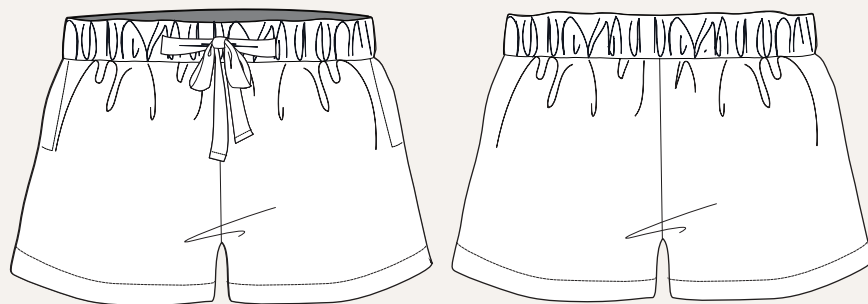
- 100% Polyester
- Self-Fabric V-Neck Collar
- Dropped Shoulder
- Front And Back Yoke



COMING SOON UF COZY
FULL-BUTTON SHIRT

U804TU Adult: XS-4XL
U804TY Youth: XS-XL

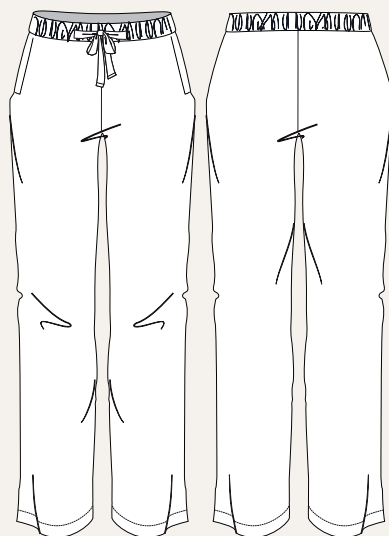
- 100% Polyester
- Moisture-Wicking
- Anti-Odor Technology
- Full-Button With Clear Buttons
- Long Sleeve With Double Clear Button Cuff
- Dropped Shoulder For Relaxed Fit
- Front Flap Patch Pocked With Button Closure
- Classic Shirt Collar
- Shirttail Hem For Added Coverage



COMING SOON UF COZY
SHORT

U803BL Ladies': XS-3XL
U803BG Girl's: XXS-L

- 100% Polyester
- Moisture-Wicking
- Anti-Odor Technology
- Encased Elastic Waistband With Exterior Self Fabric Drawstring (No Drawstring On Girl's)
- On-Seam Pockets
- Inseam: Ladies' 3"; Girl's YXS 2", YXS 2.25", YS 2.5", YM 2.75", YL 3"



COMING SOON UF COZY
PANT

U804BU Adult: XS-4XL
U804BY Youth: XS-XL

- 100% Polyester
- Moisture-Wicking
- Anti-Odor Technology
- Encased Elastic Waistband With Exterior Self Fabric Drawstring (No Drawstring On Youth)
- On-Seam Pockets
- Inseam: Adult 32"; Youth YXS 16.875", YS 20", YM 23.125", YL 26.75", YXL 27.5"



CHAOS



ENVY



TORQUE

UF BANNER

U287NN #635 | 24" X 48"

U287NN #613 | 30" X 72"

U287NN #639 | 48" X 96"

- 100% Polyester
- Mitored Corners
- Open Tunnel For Rod
- Top Left/Right Grommets For Hanging



ENVY



TERMINATOR



CHAOS

UF TABLECLOTH

U288NN #637 | 81" X 126"

U288NN #636 | 81" X 150"

- 100% Polyester
- Single Turn Back Hem



ACCESSORIES



MORE OPTIONS AVAILABLE IN THE CANADIAN STOCK COLLECTION.



ALL-SPORT BACKPACK

4023NN

10" X 12" X 18"

- Mesh Compartment
- Multi-Purpose Nylon Strap And Loop
- Two Mesh Side Pockets
- J-Hook
- Zippered Side Pocket With Jock Tag
- Adjustable Shoulder Straps
- Body - 100% Heavy Duty Sport Polyester
- Imported

Colors: Black/White, Red/Black/White, Purple/Black/White, Royal/Black/White, Forest/Black/White, Maroon/Black/White, Navy/Black/White



ALL-SPORT GLITTER BACKPACK

4024NN

10" X 12" X 18"

- Mesh Compartment
- Multi-Purpose Nylon Strap And Loop
- Two Mesh Side Pockets
- J-Hook
- Zippered Side Pocket With Jock Tag
- Adjustable Shoulder Straps
- 70% Polyurethane Upholstery/30% Polyethylene Terephthalate
- Imported

Colors: Black Glitter/Black/White, Royal Glitter/Black/White, Red Glitter/Black/White, Silver Glitter/Black/White





ALL-AROUND DUFFLE BAG

4026NN

21.75" X 10.75" X 11.75"

- 100% Heavy Duty Sport Polyester
- Large U-Shaped Compartment
- Front Pocket With Mesh Organizer
- Zippered Side Pocket With Jock Tag
- Detachable And Adjustable Padded Shoulder Strap
- Heavy Duty Metal Hardware
- Imported

Colors: Black/White, Maroon/Black/White, Red/Black/White, Forest/Black/White, Navy/Black/White, Royal/Black/White, Purple/Black/White



ALL-AROUND GLITTER DUFFLE BAG

4027NN

21.75" X 10.75" X 11.75"

- 70% Polyurethane Upholstery/30% Polyethylene Terephthalate
- Large U-Shaped Compartment
- Front Pocket With Mesh Organizer
- Zippered Side Pocket With Jock Tag
- Detachable And Adjustable Padded Shoulder Strap
- Heavy Duty Metal Hardware
- Imported

Colors: Black Glitter/White, Silver Glitter/Black/White





ALL-SEASON SLING BAG

4028NN 13" X 17.5"

- Nylon Webbing Carrying Handles
- Drawcord Closure
- Body - 100% Polyester
- Imported

Color: Black



ESSENTIAL BACKPACK

4030NN 10" X 6.5" X 17.75"

- 100% Heavy Duty Sport Polyester
- Water-Resistant
- Zippered Main Compartment with Two Zipper Pulls
- Side Pocket Enabling Easy Access Storage
- Interior Pocket
- Imported

Colors: Red/Black, Purple/Black, Royal/Black, Forest/Black, Maroon/Black, Navy/Black, Black



ESSENTIAL DUFFLE BAG

4031NN 18" X 9" X 10"

- 100% Heavy Duty Sport Polyester
- Water-Resistant
- Zippered Main Compartment With Two Zipper Pulls
- Side Pocket Enabling Easy Access Storage
- Zippered Interior Pocket
- Imported

Colors: Black, Navy, Royal, Red, Purple, Forest, Maroon



ENDURE DUFFLE BAG

4032NN 12" X 24" X 13"

- 100% Polyester
- Zippered Main Compartment With Two Zipper Pulls
- Mesh Side Pocket With Elastic Binding At Opening
- Water-Resistant
- 2 Compartment Interior Pocket With Zipper In The Main Compartment To Keep Everything Organized (Dimensions 10" x 15")
- 2 Zippered Side Pockets To Keep Must Have Items Secure
- Padded, Removable Shoulder Strap
- Reinforced Top Handles With Handle Wrap For Easy Transporting
- Contrasting Honeycomb Bottom Panel For Durability

Colors: Black

SQUAD BACKPACK

4033NN

18" X 12.5" X 9.5" • 5" X 9" X 2"



- 100% Polyester
- Water-Resistant
- 3 Zippered Main Compartments And 1 Front Zippered Pocket To Securely Store Items
- Detachable Fanny Pack
- Padded Interior Laptop Sleeve
- 2 Side Mesh Pockets With Elastic Binding On The Top
- Looped Webbing On Bag Sides For External Storage
- Top Applied Champion Script Elastic
- Padded Shoulder Straps And Back Panel For Comfort During Wear

Colors: Black

SQUAD GLITTER BACKPACK

4034NN

18" X 12.5" X 9.5" • 5" X 9" X 2"



- 70% Polyurethane Upholstery/30% Polyethylene Terephthalate
- Water-Resistant
- 3 Zippered Main Compartments And 1 Front Zippered Pocket To Securely Store Items
- Detachable Fanny Pack
- Padded Interior Laptop Sleeve
- 2 Side Mesh Pockets With Elastic Binding On The Top
- Looped Webbing On Bag Sides For External Storage
- Top Applied Champion Script Elastic
- Padded Shoulder Straps And Back Panel For Comfort During Wear

Colors: Black Glitter/Rainbow



GARMENT BAG

4029NN

21.5" X 3" X 39"

- 100% Heavy Duty Sport Polyester
- Water-Resistant
- Full Front Zipper
- Outside Zipper Pocket
- Compartment For Extra Storage
- Bag Folds With Handles For Easy Carrying

Color: Black

ULTIMATE SPORT BAG

4035NN

26" X 13.5" X 10"



- 100% Heavy Duty Sport Polyester
- Water-Resistant
- 2 Bat Holders To Accommodate 4 Bats With A Looping System And Draw Cord System For Stability
- Heavy Duty Wheels That Can Tackle Harsh Terrain
- 2 Side Mesh Pockets With Elastic Binding On The Top Opening For Holding Items In Place
- 2 External Side Pockets With Binding On Top Opening For Secure Storage
- Buckle And Latch Webbing For Adjustable, Extra External Storage
- 15" (Fully Extended) Retractable Handle For Easy Guiding
- Large, Zippered Main Compartment To Carry A Multitude Of Items
- Top Front External, Zippered Pocket Features A Soft Felt Lining To Protect Your Sunglasses Or Phone
- Lower Front External, Zippered Pocket Features A Continuous Zipper To Allow For Decoration
- Front Guard On Bottom To Protect The Bag's Bottom Fabric And To Keep The Bag From Losing Its Shape
- Imported

Color: Black



TRUCKER MESH HAT

4100NN

OSFA

- Body: 100% Cotton
- Mesh Side And Back Panels
- Adjustable Plastic Snapback
- Interior Sweatband
- Structured Solid Front Panel
- Pre-Curved Visor
- Sewn Eyelets
- Imported

Colors: Red/White, Navy/White, Royal/White, Black/White



COTTON TWILL HAT

4101NN

OSFA

- Body - 100% Cotton
- Pre-Curved Bill
- Self-Fabric Closure With Brass
- Interior Sweatband
- Washed Cotton Twill
- Six Panel, Unstructured
- Sewn Eyelets
- Imported

Colors: Maroon, Red, Forest, Navy, Royal, Purple, White, Stone, Black



STRETCH FIT HAT

4102NN

OSFA

- Body: 97% Cotton/3% Spandex
- Six Panel, Structured, Mid-Profile
- Stretch Fit
- Sewn Eyelets
- Interior Sweatband
- Imported

Colors: Maroon, Red, Forest, Navy, Royal, Purple, White, Stone, Black



FLAT BILL STRETCH FIT HAT

4103NU

Adult: OSFA

4103NY

Youth: OSFA

- Moisture-Wicking
- Classic Flat Bill
- Stretch Fit Headband For Adjustable Comfort
- Back And Side Panels Have Laser Cut Design For Breathability
- 6 Panels
- Imported

Colors: White/Royal, White/Navy, White/Red, White/Black



SLIDE

4203NU Adult: XS(3-4), S(5-6), M(7-8), L(9-10), XL(11-12) • Ladies will need to order 2 sizes down
4203NY Youth: M(12-13), L(1-2)

- Slide-On Design
- Open Toe
- Signature Logo Detailing
- Lightweight EVA Molded Outsole
- Adjustable Velcro Strap With Micro Fiber Upper

Color: Black



ESSENTIAL CREW SOCK

4300AU Adult: Small(Ladies' 5-9, Men's 3-7.5)
Medium(Ladies' 8-12, Men's 6-13)
4300AY Youth: Medium(9-2.5)

- 97% Polyester/2% Spandex/1% Other
- Crew Length
- Athletic, Ribbed Upper For A Secure Fit
- Cushioned Toe And Heel For Durable Comfort
- Imported

Color: White, Black





AIRBORNE



SHOUT©

UF SLING BAG

U400NN

19.5" X 14.5"

- 100% Polyester
- Drawcord Encased In Hem And Secured By Grommets
- Imported



DYNAMITE



ELECTRIFY

UF BARREL BAG

U40INN

20"x 10"x 10"

- 100% Polyester
- Strap Length: 25"
- Interior Flap Pocket With Hook/Loop Closure
- Nylon Webbing Carrying Handles
- Large Main Zipper Compartment



CRUSHER



FRAGMENT

UF BACKPACK

U402NN

11" X 7" X 16.5"

- 100% Polyester
- Dual Zippered Pockets With Interior Organizational Pockets
- Front Zippered Pocket
- Two Elastic Side Mesh Pockets
- Padded Back Panel
- Contoured Adjustable Straps
- Top Loop Haul For Easy Carrying



ALLOY



KICK TWIST

COMING SOON UF SQUAD BACKPACK

U404NN

18" X 12.5" X 8.5"

- 3 Zippered Main Compartments And 1 Front Zippered Pocket To Securely Store Items
- Detachable Fanny Pack That Features Two Zippered Compartments And An Adjustable Strap With Buckle Closure
- Loop Haul At Top Of Bag For Carrying And Hanging Capabilities
- Shoulder Straps Feature Lock System For Adjustability



KICK TWIST



ROWDY

COMING SOON **UF** DUFFLE BAG

U405NN 21.75" X 10.75" X 11.75"

- Large U-Shaped Compartment With Interior Pocket
- Front Pocket With Mesh Organizer
- Zippered Side Pockets
- Detachable And Adjustable Padded Shoulder Strap
- Velcroed Haul Handles



DYNAMITE

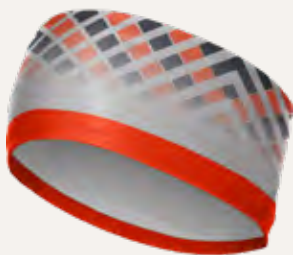


SHATTER

COMING SOON **UF** POCKETED GARMENT BAG

U403NN 21.5" X 3" X 39"

- 100% Polyester
- Full Front Zipper
- Outside Zipper Pocket
- Compartment For Extra Storage
- Bag Folds With Handles For Easy Carrying



CHISEL



MACH5

UF HEADBAND

U283NN OSFA

- 85% Polyester/15% Spandex
- 3.5" Width
- 19.75" Total Circumference
- Interior Brushed Side For Extra Warmth



ACTIVATE



FRACTURE

UF REVERSIBLE HEADBAND

U285NN OSFA

- SpiritFlex Lite 88% Polyester/12% Spandex
- Moisture-Wicking
- Tie Back Design
- 29.5" Long
- Reversible
- Made In The USA Of Imported Fabrics



UF CREW SOCK

U290AU Adult: Small (Ladies' 5-9, Men's 3-7.5),
Medium (Ladies' 8-12, Men's 6-13)
U290AY Youth: OSFA (9-2.5)

- 97% Polyester/2% Spandex/1% Other
- Crew Length
- Athletic, Ribbed Upper For A Secure Fit
- Cushioned Toe And Heel For Durable Comfort



ARRAY



FLASH

UF ARM SLEEVE

U291AU Adult: S/M, L/XL
U291AY Youth: S, L

- 88% Polyester/12% Spandex
- Length: Adult 15.5" | Youth 11" (YS/YM), 12.5" (YL/YXL)
- Moisture-Wicking
- Flatlock Seams To Eliminate Chafing
- Encased Elastic Top To Hold Sleeve In Place
- Imported



POISE



SPRINKLE

NEW UF SHIMMER SCRUNCHIE

U299AN

- 80% Nylon/20% Spandex
- Encased Elastic For The Perfect Fit In Your Hair Or On Your Wrist
- Clean Finished Seams For Less Bulk
- Comfortable, Easy Styling Solution
- Inner Diameter Approx. 1"
- Outer Diameter Approx. 4"
- Imported



PEP



HIDEAWAY

UF SUBLIMATED SCRUNCHIE

U292AN

- Custom
- Attached, Pre-Tied Bow
- Encased Elastic To Fit Your Ponytail Or Wrist
- Clean Finished Seams For Less Bulk When Tying
- Moisture-Wicking And Odor-Resistant



DYNAMITE



OASIS

UF PILLOWCASE

U286NN

Standard: 32"X 21" • King: 38"X 21"

- 100% Polyester Jersey
- Moisture-Wicking And Odor-Resistant
- Imported



ECLIPSE



JOLT

UF FACE MASK

U296AU

Adult: S/M, L/XL

U296AY

Youth: S/M, L/XL

- 88% Polyester/12% Spandex
- Soft Breathable Fabric
- Continuous Elastic Through Top And Bottom Tunnel For Secure Fit
- Elastic Ear Loops
- Medium Weight 2-Ply Fabric



ECLIPSE



GRADIENT



HERITAGE



LATERAL



MODERN CAMO



SHOUT

UF GAITER

U297AU

Adult: S/M(9" X 15"), L/XL(10" X 15")

U297AY

Youth: S/M(7" X 11"), L/XL(8" X 11")

- 88% Polyester/12% Spandex
- 1-Ply Smooth, Breathable Knit Fabric
- Single Turn Back Hem
- Flat Lock Seam For Clean Finish
- Stretch Fabric For An Easy On And Easy Off

BASEBALL







TWO-BUTTON HENLEY JERSEY

2652TU	Adult: S-3XL
2652TY	Youth: S-XL

- 100 % Polyester
- Moisture-Wicking And Odor-Resistant
- Stand Collar For No Distractions
- Back Neck Tape To Eliminate Abrasion
- Modern Two-Button Placket
- Classic Set-In Sleeve

Colors: Maroon, Red, Forest, Navy, Royal, Purple, Steel Grey, Black



HERITAGE JERSEY

5905TU

Adult: S-3XL

5905TY

Youth S-XL

- 100% Polyester
- Top Applied 1" 3-Tier Braid Around Neck And Sleeve Hem
- Moisture-Wicking
- Odor-Resistant
- Jocktag At Left Hem
- V-Neck For Non-Restrictive Movement
- Classic Set-In Sleeve
- Drop Tail Hem For Easy Tucking And Full Coverage
- Imported

Colors: Royal/White, Navy/White, Red/White, Black/White, Forest/White, Maroon/White, White/Black



SLIDER JERSEY

5906TU

Adult: S-3XL

5906TY

Youth: S-XL

- 100% Polyester
- Full Button Front
- Raglan Sleeve For Ease Of Movement
- Contrast Twill Tape Around Front Placket And Sleeves
- Drop Tail Hem For Easy Tucking Or Full Coverage When Untucked
- Jocktag At Left Hem

Colors: Red/White, Navy/White, Royal/White, White/Black, Black/White





ADJUSTABLE BELT

5904AN

OSFA

- Elastic Belt with Leather and Metal Buckle
- Width: 1.5"
- Imported

Colors: Red, Navy, Royal, Black



ACTION PANT

5904BU

Adult: S-3XL

5904BY

Youth: S-L

- 100% Polyester
- Inseam: Men's 34" (S-XL), 35" (2XL-3XL) | Youth 24" (YS), 27.5" (YM), 31" (YL)
- Back Welt Pocket (Adult, Youth)
- Reinforced Knees
- Zip Fly Closure
- Imported

Colors: Black, Navy, Steel Grey, White



STRETCH FIT HAT

4102NN

OSFA



- Body: 97% Cotton/3% Spandex
- Six Panel, Structured, Mid-Profile
- Sewn Eyelets
- Interior Sweatband
- Imported

Colors: Maroon, Red, Forest, Navy, Royal, Purple, White, Stone, Black

FLAT BILL STRETCH FIT HAT

4103NU

Adult: OSFA

4103NY

Youth: OSFA



- Moisture-Wicking
- 6 Panels
- Classic Flat Bill
- Imported
- Stretch Fit Headband For Adjustable Comfort
- Back And Side Panels Have Laser Cut Design For Breathability

Colors: White/Royal, White/Navy, White/Red, White/Black

COTTON TWILL HAT

4101NN

OSFA



- Body - 100% Cotton
- Washed Cotton Twill
- Pre-Curved Bill
- Six Panel, Unstructured
- Self-Fabric Closure With Brass
- Sewn Eyelets
- Interior Sweatband
- Imported

Colors: Maroon, Red, Forest, Navy, Royal, Purple, White, Stone, Black

CHAMPION MADE FULL LENGTH BASEBALL PANT I

REGULAR • C365BU | Adult: S-4XL

REGULAR • C365BY | Youth: XS-XL

LONG • C366BU | Adult: S-4XL

LONG • C366BY | Youth: XS-XL

- Double Knit (100% Polyester)
- Regular Inseam: Men's 32" | Youth 18.875" (YXS), 22" (YS), 25.125" (YM), 25.75" (YL), 29.5" (YXL)
- Long Inseam: Men's 34" | Youth 20.875" (YXS), 24" (YS), 27.125" (YM), 30.75" (YL), 31.5" (YXL)
- Dyed Fabric Main Body
- 7 Belt Loops To Keep Your Accessory In Place
- Extended Waistband With Exposed Champion Branded Interior Elastic For Adjustable Comfort
- 2 Button Closure With Zipper Fly For A Secure Fit
- Dual Layered Knee To Protect Against Abrasion
- 2 Back Welt Pockets To Carry Items Safely And Out Of The Way
- 2 Inseam Options; Regular And Long

CHAMPION MADE CROPPED BASEBALL PANT I

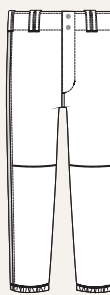
C361BU | Adult: S-4XL

C361BY | Youth: XS-XL

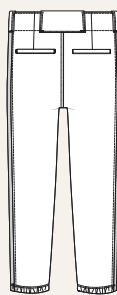
- Double Knit (100% Polyester)
- Regular Inseam: Men's 18" | Youth 14" (YS)
- Dyed Fabric Main Body
- 7 Belt Loops To Keep Your Accessory In Place
- Extended Waistband With Exposed Champion Branded Interior Elastic For Adjustable Comfort
- 2 Button Closure With Zipper Fly For A Secure Fit
- Dual Layered Knee To Protect Against Abrasion
- 2 Back Welt Pockets To Carry Items Safely And Out Of The Way
- Encased Elastic Hem To Keep Pant Leg In Place



Full Length Baseball Pant I



Cropped Baseball Pant I



1

CHOOSE YOUR TEAM LOOK IN YOUR TEAM COLORS

Customize your ultimate baseball look.



WHITE



BLACK



STEEL GREY



PURPLE



MAROON



RED



ORANGE



NAVY



ROYAL



COL. BLUE



FOREST



KELLY



ATH. GOLD



VEGAS GOLD



CARDINAL

2

CUSTOMIZE YOUR BRAID

Choose your braid by blending bold colors and patterns.



Braid 1



Braid 2



Braid 3



Braid 4



Braid 5



Braid 6



Braid 7



Braid 8



Braid 9



Braid 10



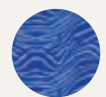
Braid 11



Braid 12

ASK ABOUT BRAIDS WITH A PATTERN!

\$5 upcharge per item for patterned braids.





CHANGE UP



SLUGGER

UF FULL-BUTTON BASEBALL JERSEY

U360TU Adult: XS-3XL

U360TY Youth: S-XL

- 100% Polyester
- Moisture-Wicking
- Classic Full Button Front
- Modified Raglan Sleeve That Won't Restrict Movement
- Curved Hem For Easy Tucking Or Full Coverage When Untucked
- Lightweight Material To Enhance Performance



BASELINE



RETRO

UF V-NECK SHORT SLEEVE JERSEY

U263TU Adult: S-3XL

U263TY Youth: S-XL

- 100% Polyester
- Odor-Resistant
- Classic Set-In Sleeve
- Self Fabricated V-Neck Collar For Non-Restrictive Movement
- Imported



STRIKE



PINSTRIPE

UF BASEBALL TEE

U361TU Adult: XS-4XL

U361TY Youth: S-L

- 100% Polyester Microfilament Interlock
- Moisture-Wicking And Odor-Resistant
- Short Sleeve Crew Neck Tee
- Imported



ARRAY



FLASH

UF ARM SLEEVE

U291AU Adult: S/M, L/XL

U291AY Youth: S, L

- 88% Polyester/12% Spandex
- Length: Adult 15.5" | Youth 11" (YS/YM), 12.5" (YL/YXL)
- Moisture-Wicking
- Flatlock Seams To Eliminate Chafing
- Encased Elastic Top To Hold Sleeve In Place
- Imported



BASKETBALL





GAME CHANGER BASKETBALL JERSEY

3114TU Adult: S-3XL
3114TL Ladies': XS-2XL
3114TY Youth: S-XL

- 100% Polyester
- Moisture-Wicking Mesh Insets
- Odor-Resistant
- V-Neck With Facing For Non-Restrictive Movement And Durability
- Engineered Fit Around Arm And Chest Area For Distraction Free Performance
- Full Back For Coverage
- Side Panels With Mesh Insets For Targeted Ventilation
- Jocktag At Left Hem

Colors: Royal, Navy, Red, Black, White, Forest, Maroon, Purple



GAME CHANGER BASKETBALL SHORT

3114BU Adult: S-3XL
3114BL Ladies': XS-2XL
3114BY Youth: S-XL

- 100% Polyester
- Inseam: Men's 9" | Ladies' 7" | Youth 6" (YS), 6.25" (YM), 6.5" (YL), 6.75" (YXL)
- Moisture-Wicking Mesh Inset
- Odor-Resistant
- Encased Elastic Waistband With Flat Drawstring For Adjustable Comfort
- Angled Hem With Side Vent For Mobility And Non-Restrictive Movement
- Side Panels With Mesh Insets For Targeted Ventilation

Colors: Royal, Navy, Red, Black, White, Forest, Maroon, Purple



ZONE BASKETBALL JERSEY

3115TU

Adult: S-3XL

3115TL

Ladies': XS-2XL

3115TY

Youth: S-XL



- 100% Polyester Double Face Mesh
- Moisture-Wicking And Odor-Resistant
- Wishbone Collar
- 1 x 1 Rib Knit Around Armhole And Neckline
- Back Neck Tape To Eliminate Abrasion
- Engineered Fit Around Arm And Chest Area For Distraction Free Performance
- Shoulder Seam Pushed To The Back For Comfort
- Modified Racerback To Enable Full Range Of Motion
- 1" Top Applied 3 Tier Braid At Side Seam
- 1" Direct Embroidery Champion Logo On Right Chest

Colors: Black/White, Navy/White, Royal/White, Red/White, Forest/White, Maroon/White, White/Black

ZONE BASKETBALL SHORT

3115BU

Adult: S-3XL

3115BL

Ladies': XS-2XL

3115BY

Youth: S-XL



- 100% Polyester Double Face Mesh
- Inseam: Men's 9" | Ladies' 8" | Youth 6" (YS), 6.75" (YM), 7.5" (YL), 8.25" (YXL)
- Moisture-Wicking And Odor-Resistant
- Set-In Elastic Waistband With Flat Drawstring For Comfortable Adjustment (No Drawstring On Youth)
- Self-Patch Set On CF For More Personalization Options
- 1" Top Applied 3 Tier Braid At Side Seam For A Sleek, Retro Look
- Side V-Notch Hem For Range Of Motion

Colors: Black/White, Navy/White, Royal/White, Red/White, Forest/White, Maroon/White, White/Black

REVERSIBLE PRACTICE BASKETBALL JERSEY

I5023TU

Adult: S-3XL

I5023TL

Ladies': XS-2XL

I5023TY

Youth: S-XL



- 100% Polyester
- Open Bottom Hem For Ease Of Printing
- Team Color Side Insert When Reversed To White
- Full Athletic Fit
- Jocktag At Left Hem

Colors: Black/White, Dark Green/White, Maroon/White, Navy/White, Purple/White, Scarlet/White, Royal/White

NEW CHAMPION MADE BASKETBALL JERSEY I

C300TU | Adult: S-4XL

C300TL | Ladies': XS-3XL

C300TY | Youth: S-XL

- 100% Polyester
- Odor-Resistant Technology Captures Odor-Causing Bacteria
- Dyed Fabric Main Body
- V-Neck With Facing For Non-Restrictive Movement And Durability
- Engineered Fit Around Arm And Chest Area
- Full Back For Coverage
- Top Applied 2" Braid Side Seam For Customization



Zone 3 Is Sublimated

1

CHOOSE YOUR TEAM LOOK IN YOUR TEAM COLORS

Customize your ultimate basketball look.



WHITE



BLACK



MAROON



PURPLE



RED



FOREST



NAVY



ROYAL

2

CUSTOMIZE YOUR BRAID

Choose your braid by blending bold colors and patterns.



Braid 1



Braid 2



Braid 3



Braid 4



Braid 5



Braid 6



Braid 7



Braid 8



Braid 9



Braid 10



Braid 11



Braid 12

ASK ABOUT BRAIDS WITH A PATTERN!

\$5 upcharge per item for patterned braids.



COMING SOON CHAMPION MADE BASKETBALL SHORT I

- 5" • C301BL | Ladies': XS-3XL
- 5" • C301BY | Youth: S-XL
- 7" • C302BU | Adult: S-4XL
- 7" • C302BL | Ladies': XS-3XL
- 7" • C302BY | Youth: S-XL
- 9" • C303BU | Adult: S-4XL
- 9" • C303BL | Ladies': XS-3XL
- 9" • C303BY | Youth: S-XL
- 10" • C304BU | Adult: S-4XL

- 100% Polyester
- Odor-Resistant Technology Captures Odor-Causing Bacteria
- Dyed Fabric Main Body
- Top Applied 2" Braid Side Seam For Customization
- Extended Encased Elastic Waistband With An Interior Flat Drawstring



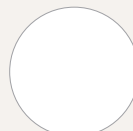
Zone 3 Is Sublimated



1

CHOOSE YOUR TEAM LOOK IN YOUR TEAM COLORS

Customize your ultimate basketball look.



WHITE



BLACK



MAROON



PURPLE



RED



FOREST



NAVY



ROYAL

2

CUSTOMIZE YOUR BRAID

Choose your braid by blending bold colors and patterns.



Braid 1



Braid 2



Braid 3



Braid 4



Braid 5



Braid 6



Braid 7



Braid 8



Braid 9



Braid 10



Braid 11



Braid 12

ASK ABOUT BRAIDS WITH A PATTERN!

\$5 upcharge per item for patterned braids.





DIGITAL CAMO



GEO

UF AWAY BASKETBALL JERSEY

U300TU	Adult: XS-4XL
U300TL	Ladies': XS-2XL
U300TY	Youth: S-L

- 88% Polyester/12% Spandex
- Moisture-Wicking
- V-Neck For Non-Restrictive Movement
- Self-Fabric Binding At Neck And Armholes
- Side Panels



BRUSHSTROKE



CLASSICO

UF AWAY BASKETBALL SHORT

U300BU	Adult: XS-4XL
U300BL	Ladies': XS-2XL
U300BY	Youth: S-XL

- 88% Polyester/12% Spandex
- Inseam: Adult 10" | Ladies' 8" | Youth 6" (YS), 7.25" (YM), 8.5" (YL), 9.75" (YXL)
- Moisture-Wicking
- Encased Elastic Waistband With Flat Drawstring For A Comfortable, Adjustable Fit
- Side Panels



DISSOLVE



CRUSHER

UF HOME BASKETBALL JERSEY

U301TU	Adult: XS-4XL
U301TL	Ladies': XS-2XL
U301TY	Youth: S-L

- SpiritFlex Lite™ (88% Polyester/12% Spandex)
- Moisture-Wicking
- V-Neck For Non-Restrictive Movement
- Self-Fabric Binding At Neck And Armholes
- Side Panels



HI-RES



CROSSHATCH

UF HOME BASKETBALL SHORT

U301BU	Adult: XS-4XL
U301BL	Ladies': XS-2XL
U301BY	Youth: S-XL

- SpiritFlex Lite™ (88% Polyester/12% Spandex)
- Inseam: Adult 10" | Ladies' 8" | Youth 6" (YS), 7.25" (YM), 8.5" (YL), 9.75" (YXL)
- Moisture-Wicking
- Encased Elastic Waistband With Flat Drawstring For A Comfortable, Adjustable Fit
- Side Panels



CHAOS



FADE AWAY



FULL COURT



PLAYMAKER



REACTION



SOLID

UF REVERSIBLE SINGLE-PLY JERSEY

U302TU	Adult: S-4XL
U302TL	Ladies': XS-3XL COMING SOON
U302TY	Youth: S-XL
U302TG	Girls': XS-L COMING SOON

- 100% Polyester
- Moisture-Wicking
- Single-Ply Reversible For Two Different Looks
- Crew Neck
- Binding Finish At Neckline And Armholes



FULL COURT



LAYUP



OVERTIME



REACTION



CHAOS



EDGE



UF REVERSIBLE SINGLE-PLY SHORT

U302BU	Adult: S-4XL
U302BL	Ladies': XS-3XL COMING SOON
U302BY	Youth: S-XL
U302BG	Girls': XS-L COMING SOON

- 100% Polyester
- Inseam: Adult 10" | Youth 7" (YS), 8" (YM), 9" (YL-YXL)
- Moisture-Wicking
- Single-Ply Reversible For Two Different Looks
- Encased Elastic Waistband With Flat Drawstring For A Comfortable, Adjustable Fit
- Binding Finish At Hem



ALIGN



ARRAY



BASELINE



FLEX



HORIZON



NET

UF ELITE BASKETBALL JERSEY

U3I4TU

Adult: S-3XL

U3I4TL

Ladies': XS-2XL

U3I4TY

Youth: S-XL

- Body: Dry Lock 100% Polyester Interlock Knit, Midweight (200g/m)
- Side Insets: 100% Polyester, Lightweight (120g/m)
- Moisture-Wicking And Odor-Resistant
- V-Neck For Non-Restrictive Movement
- Distraction-Free Performance Fit Around Arm And Chest
- Side Panels With Mesh Insets For Ventilation



SOLID



PINSTRIPE

UF ELITE BASKETBALL SHORT

U3I4BU

Adult: S-3XL

U3I4BL

Ladies': XS-2XL

U3I4BY

Youth: S-XL

- Body: Dry Lock 100% Polyester Interlock Knit, Midweight (200g/m)
- Side Insets: 100% Polyester, Lightweight (120g/m)
- Inseam: Adult 9" | Ladies' 7" | Youth 6" (YS), 6.75" (YM), 7.5" (YL), 8.25" (YXL)
- Moisture-Wicking
- Odor-Resistant
- Elastic Waistband with Flat Drawstring For Comfortable Adjustment (No Drawstring On Youth)
- Side Panels With Mesh Insets For Targeted Ventilation
- Angled Hem With Side Vent For Mobility And Breathability



FLEX



BASELINE



CLASSICO



FIERCE

UF PERFORMANCE SHORT SLEEVE TEE

U260TU Adult: XS-4XL
U260TL Ladies': XS-3XL
U260TY Youth: S-L

- 100% Polyester
- Moisture-Wicking
- Short Sleeve Crew Neck Tee
- Made In U.S.A. & Imported



TERMINATOR



MIRAGE©

UF PERFORMANCE LONG SLEEVE TEE

U265TU Adult: XS-4XL
U265TL Ladies': XS-3XL
U265TY Youth: S-L

- 100% Polyester
- Moisture-Wicking
- Long Sleeve Crew Neck Tee
- Made In U.S.A. & Imported



SPRINT



PRIME

UF TIGHT

U274BU Adult: S-3XL
U274BY Youth: S-L

- SpiritFlex™ (88% Polyester/12% Spandex)
- Inseam: Adult 27" | Youth 19.5" (YS), 23" (YM), 26.5" (YL)
- Branded Exposed Elastic Waistband
- Contoured Pouch Pocket
- No Outseam



ALIGN



FIERCE

UF ARM SLEEVE

U291AU Adult: S/M, L/XL
U291AY Youth: S, L

- SpiritFlex™ (88% Polyester/12% Spandex)
- Length: Adult 15.5" | Youth 11" (YS/YM), 12.5" (YL/YXL)
- Moisture-Wicking
- Flatlock Seams To Eliminate Chafing
- Encased Elastic Top To Hold Sleeve In Place
- Imported

ESPORTS







DOUBLE DRY SHORT SLEEVE TEE

2657TU

Adult: S-5XL

2657TL

Ladies': XS-2XL

2657TY

Youth: S-XL

- 100% Polyester Knit
- Crew Neck (Adult & Youth)
- V-Neck (Ladies')
- Odor-Resistant
- Moisture-Wicking
- Set-In Sleeves (Adult & Youth)
- Raglan Sleeves (Ladies')

Colors: Maroon, Red, Forest, Navy, Royal, Purple, White, Steel Grey, Black



DOUBLE DRY LONG SLEEVE TEE

2656TU

Adult: S-3XL

2656TY

Youth: S-XL

- 100% Polyester Knit
- Moisture-Wicking
- Odor-Resistant
- Set-In Sleeve
- Imported

Colors: Black, Navy, Royal, Red, Purple, Forest, Maroon, White, Steel Gray





ACTIVE LUXE POLO

2399TU

Adult: S-3XL

- Active Luxe (95% Polyester/5% Spandex)
- Self-Fabric Collar
- Moisture-Wicking And Odor-Resistant
- Classic 3 Button Placket
- Back Neck Tape To Eliminate Abrasion
- Side Split, Hi-Lo Hem For Ease Of Movement While Staying Covered
- Shoulder/Sleeve Inset Extends From Neckling To Sleeve Hem, Eliminating The Shoulder Seam And Enabling Full Range Of Motion

Colors: Navy, White, Graphite, Black



LIMITED STOCK VOLT POLO

2398TU

Adult: S-3XL

2398TL

Ladies': XS-2XL

- 100% Polyester
- Classic 3 Button Placket
- Back Neck Tape
- Moisture-Wicking
- Contrasting Insets At Shoulders And Sides
- Self-Fabric Collar
- Side Vents At Hem
- Odor-Resistant

Colors: Red/White, Navy/White, Royal/White, Purple/White, White/Black, Black/White



ESSENTIAL POLO

2397TU

Adult: S-4XL

2397TL

Ladies': XS-2XL

2397TY

Youth: XS-L

- 95% Polyester/5% Spandex
- Classic 3 Button Placket
- Back Neck Tape To Eliminate Abrasion
- Self-Fabric Collar
- Side Vents At Hem

Colors: Maroon, Red, Forest, Navy, Royal, Purple, White, Graphite, Black



REVERSE WEAVE® HOODIE

I50I1TU

Adult: S-3XL

- Body: 82% Cotton/18% Polyester
- Rib: 100% Cotton, Silver Gray: 80% Cotton/20% Polyester
- Oxford Gray: 78% Cotton/22% Polyester
- Heavyweight 12 Oz. Fleece With A Soft, Brushed Interior
- Reverse Weave Fleece Is Cut On The Cross-Grain To Resist Vertical Shrinkage
- Full Athletic Fit Allows Flexible Range Of Motion
- Sturdy Stretch Ribbed Cuffs And Waistband
- Roomy 2-Ply Hood With Knotted Drawcord And Metal Grommets Adjust For Custom Comfort
- Hand-Warming Kangaroo Pocket Is Bartacked For Durability
- Stretch Rib- Knit Side Panels Adds Ease And Flexibility

Colors: Black, Dark Green, Oxford Grey, White, Silver Grey, Scarlet, Navy, Athletic Royal



POWERBLEND® FLEECE HOODIE

I50I8TU

Adult: S-3XL

I50I8TY

Youth: S-XL

- Body: 9 Oz. 50% Cotton/50% Polyester
- Rib: 49% Cotton/49% Polyester/2% Spandex
- Soft Cotton/Polyester Blend Resists Shrinking And Pilling
- Midweight 9 Oz. Fleece With A Brushed Interior For Warmth
- Responsibly Made With Up To 10% Recycled Fibers
- Wider Ribbing Helps Cuffs And Waistband Stay Flat
- Longer Length For Better Coverage
- 2-Ply Hood With Drawcord
- Hand-Warming Front Kangaroo Pocket

Colors: Dark Green(Y), Black(Y), Navy(Y), Royal(Y), Purple, Maroon(Y), White, Orange, Charcoal Heather(Y), Gold, Scarlet(Y), Light Steel(Y), Azure(Y), Lilac(Y), WOW Pink(Y), Oatmeal Heather (Y) = Available In Youth



POWERBLEND® FLEECE JOGGER

70053BU Adult: S-2XL
70053BY Youth: S-XL

- Body: 9 Oz, 50% Cotton/50% Polyester
- Inseam: Adult 31" (S-L), 31.5" (XS-2XL) | Youth 20" (YS), 23.5" (YM), 27" (YL), 28" (YXL)
- Midweight 9 Oz. Cotton/Polyester Resists Shrinking And Pilling
- Brushed Interior For Warmth Without Extra Bulk
- Responsibly Made With Up To 10% Recycled Fibers
- Extra Stitch Details For Added Durability
- Elastic Waist With Inner Drawcord
- Tapered Leg With Ribbed Ankle Cuff
- Reinforced Onseam Side Pockets

Colors: Black(Y), Charcoal Heather, Navy, Light Steel(Y)
 (Y) = Available In Youth



SURGE JOGGER

0514BU Adult: S-3XL
0514BL Ladies': XS-2XL
0514BY Youth: S-L

- 100% Polyester
- Inseam: Adult 29" | Ladies' 28" | Youth 20" (YS), 23.5" (YM), 27" (YL)
- Relaxed Hip And Thigh
- Slim Fitted Ankle
- Front Slant Pockets
- Branded Exposed Elastic Waistband
- Self-Fabric Cuff

Colors: Black, Navy



CHAOS



CRUSHER



DIVE



RAID



RESPAWN



RUSH



SLATE



SOLID



VALIANT



VALOR



VISION



CYBER

UF HIGH PERFORMANCE JERSEY

U650TU

Adult: XS-5XL

U650TL

Ladies': XS-2XL

- Body/Side Panels - 100% Polyester
- Collar - 85% Polyester/15% Spandex
- Modified Mandarin Collar
- Mesh Insets For Breathability
- No Underarm Seam To Prevent Chafing And Allow Movement
- Flatlock Seams To Prevent Chafing Using Soft Thread
- Microbite Soft Stitch On Neckline For Comfort
- Thicker Collar Fabric To Hold Shape



CHAOS©



FIERCE

UF PERFORMANCE SHORT SLEEVE TEE

U260TU

Adult: XS-4XL

U260TL

Ladies': XS-3XL

U260TY

Youth: S-XL

- 100% Polyester
- Moisture-Wicking
- Odor-Resistant
- Short Sleeve Crew Neck



DIMENSION



TORQUE©

UF PERFORMANCE LONG SLEEVE TEE

U265TU

Adult: XS-4XL

U265TL

Ladies': XS-3XL

U265TY

Youth: S-XL

- 100% Polyester
- Moisture-Wicking
- Odor-Resistant
- Long Sleeve Crew Neck



ECLIPSE©



COMPASS

UF POLO

U230TU

Adult: S-6XL

U230TL

Ladies': XS-3XL

U230TY

Youth: S-XL

- 100% Polyester
- Moisture-Wicking
- Set-In Sleeve
- 3-Button Placket Opening
- Self Fabric Collar
- Side Vents
- Imported



SOLID



FIERCE©

UF PERFORMANCE HOODIE

U266TU

Adult: XS-5XL

U266TY

Youth: S-XL

- Performance Fleece (91% Polyester/9% Spandex)
- Hand-Warming Kangaroo Pocket
- Self-Fabric Cuff At Hem And Sleeve For Adaptability
- Self Fabric Cuff At Hem And Sleeve
- Headphone Port In Pocket
- Lined Hood

FOOTBALL





SPARTANS

18



HUDDLE FOOTBALL JERSEY

45705TU

Adult: S-3X

45705TY

Youth: S-XL

- Body: 94% Nylon/6% Spandex
- Shoulder, Yoke, Sleeve Cuff, Neckband: 93%Nylon/7% Spandex
- V-Neck With Mitered Collar For Non-Restrictive Movement
- Moisture-Wicking
- Cap Sleeves With Half-Elastic Cuffs For Secure Fit Over Pads
- Full Length Body With Bottom Vent

Colors: Black, White, Scarlet, Athletic Royal, Athletic Navy



HUDDLE FOOTBALL PANT

45705BU

Adult: S-3XL

45705BY

Youth: S-XL

- Body (Color): 89% Nylon/11% Lycra
- Body (White): 92% Polyester/8% Spandex
- Belt: 100% Polyester
- No-Fly Duke Crotch Gueset
- Interior Elastic Waistband To Secure Waist
- No-Show Belt System With Attached Belt For Comfort And Adjustable Fit
- Built-In Thigh And Knee Pockets For Pads For Impact Protection
- Encased Elastic At Leg Opening

Colors: Scarlet, Athletic Navy, Athletic Royal, White, Graphite, Black



BREEZE PRACTICE FOOTBALL JERSEY

5506TU

Adult: S/M, L/XL, 2X/3X

5506TY

Youth: S/M, L/XL

- Body: 100% Nylon
- Yoke: 93% Nylon / 7% Spandex
- V-Neck With Self Fabric Collar For Non-Restrictive Movement
- Set-In, Open Sleeves To Fit Over Pads
- Waist-Length

Colors: Black, Navy, Red, Royal, White



TUFFRIDER PRACTICE FOOTBALL PANT

5506BU

Adult: S-3XL

5506BY

Youth: S-XL

- Body: 100% Polyester
- Exposed Interior Elastic Waistband With Slots For Belt For Secure Waist
- No Fly Front
- Interior Mesh Thigh And Knee Pockets To Place Pads For Impact Protection
- Encased Half-Elastic At Leg Opening

Colors: Black, White, Graphite





D-RING FOOTBALL BELT

5502AU

Adult: S/M(32"-38"), L/XL(40"-42"), 2X/3X(44"-46")

- 100% Polyester
- 1.25" Dazzle Covered Web Belt With D-Ring

Colors: Black, Navy, Royal, Red, Graphite, White



COMPRESSION TANK

26I2TU

Adult: S-3XL

26I2TL

Ladies: XS-2XL

26I2TY

Youth: S-L

- 92% Polyester/8% Spandex
- Moisture-Wicking
- Crew Neck With Self Fabric Collar For A Comfortable Fit
- Flat-Lock Seams To Eliminate Chaffing
- Modified Racerback To Enable Full Range Of Motion
- Close To Body Fit For Comfort

Colors: Red, Navy, Royal, Black



SHORT SLEEVE COMPRESSION TEE

26I3TU

Adult: S-3XL

26I3TY

Youth: S-XL

- 92% Polyester/8% Spandex
- Moisture-Wicking
- Crew Neck With Self Fabric Collar For A Comfortable Fit
- Flatlock Seams To Eliminate Chaffing
- Classic Set-In Sleeve For Added Range Of Motion
- Back Neck Tape To Eliminate Abrasion
- Close To Body Fit For Comfort

Colors: Graphite, White, Navy, Black



HALF SLEEVE COMPRESSION TEE

26I4TU

Adult: S-3XL

26I4TY

Youth: S-XL

- 92% Polyester/8% Spandex
- Crew Neck With Self-Fabric Collar
- Flat-Lock Seams To Eliminate Chaffing
- Classic Set-In Sleeve For Added Range Of Motion
- Back Neck Tape To Eliminate Abrasion
- Close To Body Fit
- Moisture-Wicking

Colors: Navy, White, Graphite, Black



LONG SLEEVE COMPRESSION TEE

26I5TU

Adult: S-3XL

26I5TL

Ladies': XS-2XL

26I5TY

Youth: S-XL

- 92% Polyester/8% Spandex
- Crew Neck With Self Fabric Collar
- Flat-Lock Seams To Eliminate Chaffing
- Classic Set-In Sleeve For Added Range Of Motion
- Back Neck Tape To Eliminate Abrasion

Colors: Graphite, White, Navy, Black



CHAOS©



CLASSICO©



DIGITAL CAMO



EDGE©



FORCE©



NITRO©

UF NON-COMPLIANT FOOTBALL JERSEY

U550TU

Adult: XS-4XL

U550TY

Youth: S-XL

- Main Body, Yoke, Sleeves: 100% Polyester, Two-Way Stretch Steel Mesh
- Side Panels, Neck Trim, Cuffs: 92% Polyester/8% Spandex
- V-Neck With Mitered Collar For Non-Restrictive Movement
- Cap Sleeves With Cuffs For Secure Fit Over Pads
- Side Panels
- 2 Layer Front/Back Yoke For Durability
- Back Vent



BLITZ



CHAOS©



CONQUER



DIGITAL CAMO

UF COMPLIANT FOOTBALL JERSEY

U551TU

Adult: XS-4XL

U551TY

Youth: S-XL



EDGE©



FORCE©

- Main Body, Yoke, Sleeves: 100% Polyester, Two-Way Stretch Steel Mesh
- Side Panels, Neck Trim, Cuffs: 92% Polyester/8% Spandex
- V-Neck With Mitered Collar For Non-Restrictive Movement
- Cap Sleeves With Cuffs For Secure Fit Over Pads
- Side Panels
- 2 Layer Front/Back Yoke For Durability
- Back Vent



BLITZ



CHAOS



CLASSICO



DIGITAL CAMO



EDGE



RUSH

UF SLEEVELESS COMPRESSION TEE

U262TU

Adult: XS-3XL

U262TY

Youth: XS-XL

- 92% Polyester/8% Spandex
- Crew Neck With Self Fabric Collar For A Comfortable Fit
- Sleeveless Design
- Flat-Lock Seam At Shoulder To Eliminate Chaffing
- Close To Body Fit For Comfort



CHAOS



FORCE

UF 1/2 SLEEVE COMPRESSION TEE

U261TU

Adult: XS-3XL

U261TY

Youth: XS-XL

- 92% Polyester/8% Spandex
- Crew Neck With Self Fabric Collar For A Comfortable Fit
- Flat-Lock Seams At Shoulder And Armhole To Eliminate Chaffing
- Classic Set-In Sleeve For Added Range Of Motion
- Close To Body Fit For Comfort



DIGITAL CAMO



RIVAL

UF TRAINING SHORT

U268BU

Adult: XS-3XL

U268BL

Ladies': XS-2XL

U268BY

Youth: S-XL

- 100% Polyester
- Inseam: Adult 9" | Ladies' 8" | Youth 6.375" (YS), 7.625" (YM), 8.875" (YL), 10.125" (YXL)
- Encased Elastic Waistband With Flat Drawstring For A Comfortable Fit
- Side Vents
- Moisture-Wicking

LACROSSE







BOOST



CROSSE



STRIKE

UF REVERSIBLE LACROSSE PINNIE

U380TU

Adult: S-3XL

U380TL

Ladies': XS-2XL

U380TY

Youth: S-XL

- 100% Polyester
- Moisture-Wicking
- Reversible for two different looks
- Scoop neck for non-restrictive movement
- Full back



AGILITY



FACE-OFF



REGULATOR

UF LACROSSE JERSEY

U381TU

Adult: S-3XL

U381TY

Youth: S-XL

- V-Neck For Non-restrictive Movement
- Raglan Sleeve For Ease And Mobility
- Self Fabric Collar



IMPACT



POWER PLAY



PRISM

UF V-NECK SHORT SLEEVE JERSEY

U382TL

Ladies': XS-2XL

- 88% Polyester/12% Spandex
- V-Neck For Non-restrictive Movement
- Raglan Sleeve For Ease And Mobility
- Self Fabric Collar



DIGITAL CAMO



RIVAL

UF TRAINING SHORT

U268BU Adult: XS-3XL
U268BL Ladies': XS-2XL
U268BY Youth: S-XL

- 100% Polyester
- Inseam: Adult 9" | Ladies' 8" | Youth 6.375" (YS), 7.625" (YM), 8.875" (YL), 10.125" (YXL)
- Encased Elastic Waistband With Flat Drawstring For A Comfortable Fit
- Side Vents
- Moisture-Wicking



AGILITY

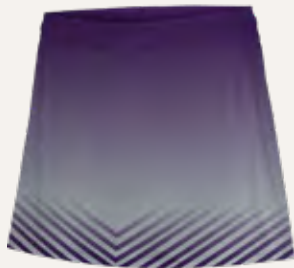


HERITAGE

UF 7" TRAINING SHORT

U272BU Adult: S-3XL
U272BY Youth: S-XL

- 100% Polyester
- Inseam: Adult 7" | Youth 3.5" (YS), 4.5" (YM), 5.5" (YL), 6.5" (YXL)
- Odor-Resistant
- Moisture-Wicking
- Encased Elastic Waistband With Flat Drawstring For A Comfortable, Adjustable Fit
- Side Vents



ELECTRA



ROWDY

UF PERFORMANCE SKORT

U273BL Ladies': XS-2XL
U273BG Girl's: S-L

- 88% Polyester/12% Spandex
- Inseam: 4" | Youth 3" (YS), 3.375" (YM), 3.625" (YL)
- Mid-Rise
- Encased Elastic Waistband With Interior Drawstring For A Comfortable, Adjustable Fit (No Drawstring In Girls)
- Inner Compression Shorts With Side Pocket For Storage Of Small Items
- Side Vents



PREMIER



FURY

UF 5" SHORT

U270BL Ladies': XS-2XL
U270BG Girl's: S-L

- 88% Polyester/12% Spandex
- Inseam: Ladies' 5" | Girls' 3.25" (YS), 4" (YM), 4.5" (YL)
- Encased Elastic Waistband With Interior Drawstring For A Comfortable, Adjustable Fit (No Drawstring In Girls)
- Side Panels



SOCGER





CHAOS



CLASSICO



CRUSHER



EDGE



FIERCE



SOLID

UF SOCCER TEE

U420TU | Adult: XS-4XL

U420TY | Youth: S-XL

- 100% Polyester
- Moisture-Wicking
- Short Sleeve Crew Neck Tee
- Clean-finished Bottom And Sleeve Hems
- Odor-Resistant
- Double-Needle Hemmed Bottom And Sleeve
- Imported



POWER PLAY



PREMIER



PRISM



SOLID



FURY



CHAOS

UF V-NECK SHORT SLEEVE JERSEY

U382TL | Ladies': XS-2XL

- 88% Polyester/12% Spandex
- V-Neck For Non-Restrictive Movement
- Raglan Sleeve For Ease And Mobility
- Self Fabric Collar



WAVELENGTH



TORQUE



TERMINATOR



REGULATOR



HERITAGE



FACE-OFF

UF 7" TRAINING SHORT

U272BU | Adult: XS-3XL

U272BY | Youth: S-XL

- 100% Polyester
- Inseam: Adult 7" | Youth 3.5" (YS), 4.5" (YM), 5.5" (YL), 6.5" (YXL)
- Moisture-Wicking
- Encased Elastic Waistband With Flat Drawstring For A Comfortable, Adjustable Fit
- Side Vents



BOOST



CORE



FURY



IMPACT



PREMIER



REIGN

UF 5" SHORT

U270BL | Ladies': XS-2XL

U270BG | Girls': S-L

- 88% Polyester/12% Spandex
- Inseam: Ladies' 5" | Girls' 3.25" (YS), 4" (YM), 4.5" (YL)
- Encased Elastic Waistband With Interior Drawstring For A Comfortable, Adjustable Fit (No Drawstring In Girls)
- Side Panels

SOFTBALL







TWO-BUTTON HENLEY JERSEY

2652TL

Ladies': XS-2XL

2652TY

Youth: S-XL

- 100% Polyester Knit
- Moisture-Wicking
- Odor-Resistant
- Stand Collar For No Distractions
- Back Neck Tape To Eliminate Abrasion
- Modern 2-Button Placket
- Classic Set-In Sleeve
- Imported

Colors: Black, Navy, Royal, Red, Purple, Forest, Maroon, Steel Grey

HERITAGE JERSEY

5905TL

Ladies': XS-2XL

5905TY

Youth S-XL

- 100% Polyester
- Moisture-Wicking
- Odor-Resistant
- Top Applied 1" 3-Tier Braid Around Neck And Sleeve Hem
- V-Neck For Non-restrictive Movement
- Classic Set-In Sleeve
- Drop Tail Hem For Easy Tucking Of Full Coverage
- Jocktag At Left Hem
- Imported

Colors: Royal/White, Navy/White, Red/White, Black/White, Forest/White, Maroon/White, White/Black



SLIDER JERSEY

5906TL

Ladies': XS-2XL

5906TY

Youth: S-XL

- 100% Polyester
- Full Button Front
- Raglan Sleeve For Ease Of Movement
- Contrast Twill Tape Around Front Placket And Sleeves
- Drop Tail Hem For Easy Tucking Or Full Coverage When Untucked
- Jocktag At Left Hem

Colors: Black/White, Navy/White, Royal/White, Red/White, White/Black





ADJUSTABLE BELT

5904AN

OSFA

- Elastic Belt With Faux Leather And Metal Buckle
- Width: 1.5"
- Imported

Colors: Black, Navy, Royal, Red



ACTION PANT

5904BL

Ladies': XS-2XL

5904BG

Girl's: S-L

- 100% Polyester
- Inseam: Ladies' 19" | Girls' 13.5" (YS), 14.5" (YM), 15.5" (YL)
- Mid-Calf Length
- Reinforced Knees
- Zip Fly Closure
- Imported

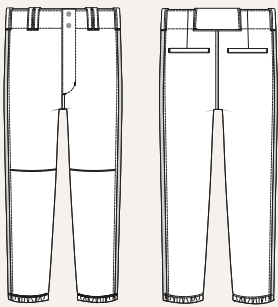
Colors: Black, Navy, White, WOW! Pink, Steel Grey

CHAMPION MADE SOFTBALL PANT I

Regular: C368BL | Ladies': XS-3XL

Regular: C368BG | Girl's: XS-L

- 100% Polyester
- Inseam: Ladies' 19" | Girl's 12" (YXS), 13" (YS), 14" (YM), 15" (YL)
- Dyed Fabric Main Body
- 7 Belt Loops to keep your accessory in place
- Extended Waistband with exposed Champion branded interior elastic for adjustable comfort
- 2 Button Closure with zipper fly for a secure fit
- Dual layered knee to protect against abrasion
- 2 Back Welt Pockets to carry items safely and out of the way
- Encased Elastic Hem to keep pant leg in place



Softball Pant I



CHOOSE YOUR TEAM LOOK IN YOUR TEAM COLORS

Customize your ultimate softball look.



WHITE



BLACK



STEEL GREY



PURPLE



MAROON



RED



ORANGE



NAVY



ROYAL



COL. BLUE



FOREST



KELLY



ATH. GOLD



VEGAS GOLD



CARDINAL



CUSTOMIZE YOUR BRAID

Choose your braid by blending bold colors and patterns.



Braid 1



Braid 2



Braid 3



Braid 4



Braid 5



Braid 6



Braid 7



Braid 8



Braid 9



Braid 10



Braid 11



Braid 12

ASK ABOUT BRAIDS WITH A PATTERN!

\$5 upcharge per item for patterned braids.





DUGOUT



FIELDER



GRANDSLAM



LINE DRIVE



RAIDER



STRIKE OUT

UF I-BUTTON SOFTBALL JERSEY

U342TL

Ladies': XS-3XL

U342TG

Girl's: S-L

- 100% Polyester
- Odor-Resistant
- Hidden Button In Placket For A Classic Look
- Mesh Insets In Underarm And Lower Back Area For Ventilation
- Modified Raglan Sleeve Enabling Full Range Of Motion
- Curved Hem For Easy Tucking Or Full Coverage When Untucked
- Forward Side Seams For Modern Design Detail
- Flat Lock Seams To Eliminate Chaffing



CHAOS



ELECTRA



POWER PLAY



REGULATOR



SOLID



THROWBACK

UF V-NECK SLEEVELESS SOFTBALL JERSEY

U341TL

Ladies': XS-2XL

U341TG

Girl's: S-L

- Body: 88% Polyester/12% Spandex
- Insets: 100% Polyester
- V-Neck For Non-Restrictive Movement
- Self-Fabric Collar
- Mesh Side Panels For Breathability
- Racerback
- No True Side Seam



ACE



CHANGE UP



DIGITAL CAMO



DREAM



FIERCE



FORCE



HERITAGE



LIVE WIRE



RALLY



RETRO

UF FULL-BUTTON SHORT SLEEVE SOFTBALL JERSEY

U340TL

Ladies': XS-2XL

U340TG

Girl's: S-L

- Polyester/Performance Fabric
- Moisture-Wicking
- Odor-Resistant
- Classic Full Button Front
- Modified Raglan Sleeve That Won't Restrict Movement
- Curved Hem For Easy Tucking Or Full Coverage When Untucked
- Lightweight Material To Enhance Performance



TRACK & FIELD





STRIDE TRACK SINGLET

0017TU | Adult: S-3XL

0017TL | Ladies': XS-2XL

0017TY | Youth: S-L

- Body: 100% Polyester
- Insets: 100% Polyester Knit Moisture-Wicking, Stain Release
- Lining: 100% Polyester Moisture-Wicking
- Odor-Resistant
- Moisture-Wicking And Stain Release Mesh
- Binding On Neckline And Armholes For Durability
- Contrasting Mesh Side Panel With Top Applied Stripes For Ventilation
- Modesty Liner In Ladies And Youth Only

Colors: Black/White, Navy/White, Royal/White, Red/White,
Forest/White, Maroon/White



STRIDE TRACK SHORT

0017BU | Adult: S-3XL

0017BL | Ladies': XS-2XL

0017BY | Youth: S-L

- Body: 100% Polyester
- Insets: 100% Polyester Knit Moisture-Wicking, Stain Release
- Lining: 100% Polyester Moisture-Wicking
- Inseam: Adult 3.25" | Ladies' 3" | Youth 2.75" (YS), 3.5" (YM), 4.25" (YL)
- Moisture-Wicking And Stain Release Mesh
- Moisture-Wicking Lining
- Odor-Resistant
- Encased Elastic Waistband With Drawstring For A Comfortable, Adjustable Fit (No Drawstring In Youth)
- Built-in Brief For Coverage With Moisture Wicking Properties
- Contrasting Mesh Side Panel With Top Applied Stripes For Ventilation

Colors: Black/White, Navy/White, Royal/White, Red/White,
Forest/White, Maroon/White





SOLID TRACK SINGLET

0018TU | Adult: XS-3XL

0018TL | Ladies': XS-2XL

0018TY | Youth: S-L

- Body: 100% Polyester
- Liner: 100% Polyester
- Moisture-Wicking
- Odor-Resistant
- Racerback For Range Of Motion
- Binding On Neckline And Armholes For Durability
- Modesty Liner In Ladies And Youth Only

Colors: Royal, Navy, Red, Maroon, Forest, Purple, Black



SOLID TRACK SHORT

0018BU | Adult: XS-3XL

0018BL | Ladies': XS-2XL

0018BY | Youth: S-L

- Body: 100% Polyester
- Interior Brief: 100% Polyester
- Inseam: Adult 3.25" | Ladies' 3" | Youth 2.75" (YS), 3.5" (YM), 4.25" (YL)
- Encased Elastic Waistband With Drawstring For A Comfortable, Adjustable Fit (No Drawstring In Youth)
- Self-fabric Binding Finished Hem
- Moisture-Wicking
- Odor-Resistant
- Built-in Brief For Coverage With Moisture Wicking Properties
- Imported

Colors: Royal, Navy, Red, Maroon, Forest, Purple, Black





PODIUM TRACK SINGLET

0019TU Adult: S-3XL
0019TL Ladies': XS-2XL
0019TY Youth: S-XL

- Body: 100% Polyester
- Insets: 100% Polyester Knit Moisture-Wicking, Stain Release
- Lining: 100% Polyester Moisture-Wicking
- Moisture-Wicking And Odor-Resistant
- Racerback For Range On Motion
- Binding On Neckline And Armhole For Durability
- Contrasting Mesh Insets In Side Panels And Front Shoulder Area For Ventilation
- Modesty Liner In Ladies' And Youth Only
- Imported

Colors: Red/White/Black, Purple/White/Black, Maroon/White/Black, Royal/White/Black, Forest/White/Black, Black/White/Steel Grey, Navy/White/Steel Grey



PODIUM TRACK SHORT

0019BU Adult: S-3XL
0019BL Ladies': XS-2XL
0019BY Youth: S-XL

- Body: 100% Polyester
- Insets: 100% Polyester Knit Moisture-Wicking, Stain Release
- Lining: 100% Polyester Moisture-Wicking
- Moisture-Wicking And Odor-Resistant
- Contrasting Mesh Insets In Side Panels For Ventilation
- Elastic Waistband With Drawstring (No Drawstring On Youth)
- Overlapping Fish Tail Hem With Binding For Durable, Full Range Of Motion
- Built-In Brief For Coverage With Moisture-Wicking Properties
- Inseam: Adult 3.25" | Ladies' 3" | Youth 2.75" (YS), 3.125" (YM), 3.375" (YL), 3.625" (YXL)
- Imported

Colors: Red/White/Black, Purple/White/Black, Maroon/White/Black, Royal/White/Black, Forest/White/Black, Black/White/Steel Grey, Navy/White/Steel Grey





ENDURANCE TRACK SINGLET

0020TL

Ladies': XS-2XL

0020TG

Girl's: S-L

- Body - 92% Polyester/8% Spandex
- Side Panel - 100% Polyester
- Moisture-Wicking
- Scoop Neck For Non-Restrictive Movement
- Side Mesh Panels With Contrasting Insets
- Racerback For Range Of Motion
- Imported

Colors: Royal/White, Navy/White, Red/White, Black/White



NEW VELOCITY TRACK SINGLET

0022TU

Adult: S-3XL

0022TL

Ladies': XS-2XL

0022TY

Youth: S-XL

- Body: 100% Polyester
- Insets: 100% Polyester Knit Moisture-Wicking
- Lining: 100% Polyester Moisture-Wicking
- Binding On Neckline And Armholes
- Moisture-Wicking And Odor Resistant
- Contrasting Mesh Insets In Side Panels And Front Shoulder Area For Ventilation

Colors: Royal/White, Navy/White, Red/White, Black/White, Forest/White, Maroon/White, Purple/White



TEMPO TRACK SHORT

0021BU

Adult: S-3XL

0021BL

Ladies': XS-2XL

0021BY

Youth: S-XL

- Body: Fusion Flex (95% Polyester/5% Spandex)
- Interior Brief: 100% Polyester
- Inseam: Adult 3" | Ladies' 2" | Youth 2" (YS), 2.375" (YM), 2.625" (YL), 2.875" (YXL)
- Moisture-Wicking
- Encased Elastic Waistband With Flat Drawstring (No Drawstring In Youth)
- Overlapped Side Vents Let You Move Freely
- Built-in Brief For Coverage

Colors: Royal, Navy, Red, Black



COMPRESSION TANK

26I2TU Adult: S-3XL
26I2TL Ladies: XS-2XL
26I2TY Youth: S-L

- 92% Polyester/8% Spandex
- Moisture-Wicking
- Crew Neck With Self Fabric Collar For A Comfortable Fit
- Flat-Lock Seams To Eliminate Chaffing
- Modified Racerback To Enable Full Range Of Motion
- Close To Body Fit For Comfort

Colors: Red, Navy, Royal, Black



DOUBLE DRY 9" COMPRESSION SHORT

I5057BU Adult: S-3XL

- Body: 88% Polyester/12% Spandex
- Liner: 100% Polyester
- Inseam: Adult 9"
- Moisture-Wicking
- Exposed Soft Elastic "C" Logo Waistband For A Comfortable, Adjustable Fit
- One-Piece Gusset That Extends From Hem To Hem For Full Range Of Motion
- No Side Seams For Non-Restricted Movement

Colors: Athletic Royal, Athletic Navy, Scarlet, Black



DOUBLE DRY 5" COMPRESSION SHORT

I5034BL Ladies': XS-2XL

- Liner: 100% Polyester
- Body: 88% Polyester/12% Spandex
- Inseam: 5"
- Moisture-Wicking
- Exposed Soft Elastic "C" Logo Waistband For A Comfortable, Adjustable Fit
- Gusset For Full Range Of Motion
- No Side Seams For Non-Restricted Movement

Colors: Black, Scarlet, Navy, Athletic Royal



DOUBLE DRY 3" COMPRESSION SHORT

I5057BL Ladies': XS-2XL

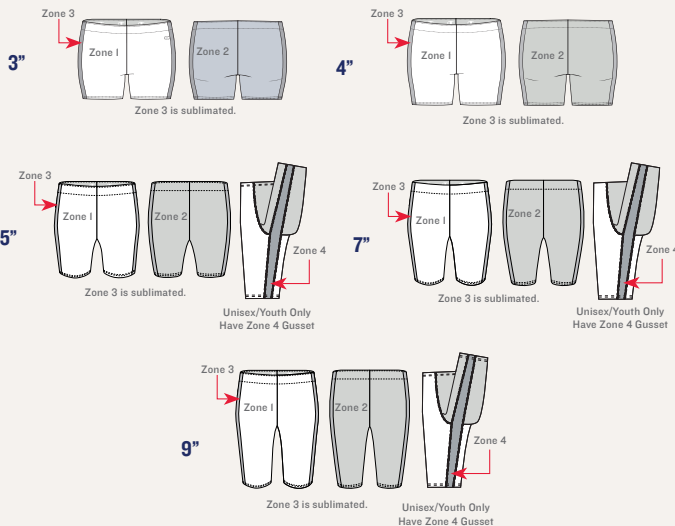
- Body: 88% Polyester/12% Spandex
- Liner: 100% Polyester
- Inseam: Ladies' 3"
- Moisture-Wicking
- Exposed Soft Elastic "C" Logo Waistband For A Comfortable, Adjustable Fit
- Gusset For Full Range Of Motion
- No Side Seams For Non-Restricted Movement

Colors: Athletic Royal, Athletic Navy, Scarlet, Black, Maroon, Dark Green

CHAMPION MADE COMPRESSION SHORT I

- 3" • C001BL | Ladies': XS-3XL
- 3" • C001BG | Girl's: XXS-L
- 4" • C002BL | Ladies': XS-3XL
- 4" • C002BG | Girl's: XXS-L
- 5" • C003BU | Adult: S-4XL
- 5" • C003BL | Ladies': XS-3XL
- 5" • C003BY | Youth: XS-XL
- 5" • C003BG | Girl's: XXS-L
- 7" • C004BU | Adult: S-4XL
- 7" • C004BL | Ladies': XS-3XL
- 7" • C004BY | Youth: XS-XL
- 7" • C004BG | Girl's: XXS-XL
- 9" • C005BU | Adult: S-4XL
- 9" • C005BL | Ladies': XS-3XL
- 9" • C005BY | Youth: XS-XL

- SpiritFlex™ 88% Polyester/12% Spandex
- 3" Inseam: Ladies' 3" | Girls' 2" (YXXS-YM), 2.5" (YL)
- 4" Inseam: Ladies' 4" | Girls' 2.25" (YXXS-YXS), 3.75" (YM), 4.25" (YL)
- 5" Inseam: Mens' 5" | Youth 3.5" (YXS), 4" (YS), 4.75" (YM), 5.5" (YL), 6.25" (YXL) | Ladies' 5" | Girls' 2.75" (YXXS-YXS), 4" (YS), 4.75" (YM), 5.25" (YL)
- 7" Inseam: Mens' 7" | Youth 5.5" (YXS), 6" (YS), 6.75" (YM), 7.5" (YL), 7.75" (YXL) | Ladies' 7" | Girls' 3.5" (YXXS), 4.75" (YXS), 6" (YS), 6.75" (YM), 7.25" (YL)
- 9" Inseam: Mens' 9" | Youth 6.5" (YXS), 7" (YS), 7.75" (YM), 8.5" (YL), 8.75" (YXL) | Ladies' 9"
- Moisture-Wicking
- Dyed Fabric Main Body
- Contrasting Insets Down The Sides For Customization
- Exposed Interior "C" Logo Elastic Waistband For Adjustable Comfort
- Gusset To Enable Full Range Of Motion
- Flat-Lock Seams To Eliminate Chaffing



1 CHOOSE YOUR TEAM LOOK IN YOUR TEAM COLORS

Customize your ultimate track & field look.



2 CUSTOMIZE YOUR BRAID

Choose your braid by blending bold colors and patterns.



ASK ABOUT BRAIDS WITH A PATTERN!

\$5 upcharge per item for patterned braids.





ALLOY



CHAOS



DASH



EDGE



FIERCE



FLIGHT



HURDLE



RELAY



SOLID



TORQUE



WAVELENGTH

UF MESH RACERBACK TRACK SINGLET

U004TU

Adult: XS-3XL

U004TL

Ladies': XS-2XL

U004TY

Youth: XS-L

- Racerback For Full Range Of Motion
- Moisture-Wicking, Odor-Resistant
- Binding At Neckline And Armholes For Durability
- Mesh Back
- Mesh Insets On Side Panels And Front Shoulder Area For Ventilation
- Modesty Liner In Ladies And Youth
- Imported



LEGACY



QUEST

UF TRACK SINGLET

U001TU	Adult: XS-3XL
U001TL	Ladies': XS-2XL
U001TY	Youth: XS-L

- 100% Polyester
- Moisture-Wicking And Odor-Resistant
- Sleeveless Scoop Neck
- Full-Back For Added Coverage
- Double-Needle Hemmed Bottom
- Imported



EDGE



MIRAGE

UF TRACK SHORT

U001BU	Adult: XS-3XL
U001BL	Ladies': XS-2XL
U001BY	Youth: XS-L

- 100% Polyester
- Inseam: Adult 3" | Ladies' 3" | Youth 2.375" (YXS), 2.75" (YS), 3.125" (YM), 3.5" (YL)
- Moisture-Wicking And Odor-Resistant
- Encased Elastic Waistband With Drawstring For A Comfortable, Adjustable Fit
- Interior Brief



TERMINATOR



DASH

UF COMPRESSION SINGLET

U002TU	Adult: XS-3XL
U002TL	Ladies': XS-2XL
U002TY	Youth: S-XL

- SpiritFlex™ (88% Polyester/12% Spandex)
- Moisture-Wicking
- Sleeveless Scoop Neck
- Double-Needle Hemmed Bottom
- Racerback Styling
- Imported



PERIMETER



DOUBLE UP

UF COMPRESSION SHORT

3" U204BL/BG	Ladies': XS-2XL, Girl's: S-L
4" U003BL	Ladies': XS-2XL
7" U002BL	Ladies': XS-2XL
9" U002BU/BY	Adult: S-3XL, Youth: S-XL

- SpiritFlex™ (88% Polyester/12% Spandex)
- Encased Elastic Waistband For A Comfortable, Adjustable Fit

VOLLEYBALL







SOLID LONG SLEEVE VOLLEYBALL JERSEY

2035TL

Ladies': XS-2XL

2035TG

Girl's: S-L

- 92% Polyester/8% Spandex
- V-Neck For Non-Restrictive Movement
- Moisture-Wicking
- Self-Fabric Collar
- Raglan Long Sleeves Provide Greater Range Of Motion

Colors: Black, Navy, Royal, Red, Forest, Maroon, White



SOLID SHORT SLEEVE VOLLEYBALL JERSEY

2034TL

Ladies': XS-2XL

2034TG

Girl's: S-L

- 92% Polyester/8% Spandex
- V-Neck For Non-Restrictive Movement
- Moisture-Wicking
- Self-Fabric Collar
- Raglan Short Sleeves Provide Greater Range Of Motion

Colors: White



ONSET VOLLEYBALL JERSEY

2032TL

Ladies': XS-2XL

2032TG

Girl's: S-L

- 92% Polyester/8% Spandex
- V-Neck For Non-Restrictive Movement
- Moisture-Wicking
- Self-Fabric Collar
- Raglan Short Sleeves With Contrast Color Insets Provide Greater Range Of Motion
- Contrasting Side Panels

Colors: Black/White, Navy/White, Royal/White, Red/White



SIDE-OUT VOLLEYBALL JERSEY

2033TL

Ladies': XS-2XL

2033TG

Girl's: S-L

- 92% Polyester/8% Spandex
- V-Neck For Non-Restrictive Movement
- Moisture-Wicking
- Self-Fabric Collar
- Raglan Long Sleeves With Contrast Color Insets Provide Greater Range Of Motion
- Contrasting Side Panels

Colors: Black/White, Navy/White, Royal/White, Red/White, Purple/White, Forest/White, Maroon/White





DOUBLE DRY 3" COMPRESSION SHORT

I5057BL Ladies': XS-2XL

- Body: 88% Polyester/12% Spandex
- Liner: 100% Polyester
- Inseam: Ladies' 3"
- Moisture-Wicking
- Exposed Soft Elastic "C" Logo Waistband For A Comfortable, Adjustable Fit
- Gusset For Full Range Of Motion
- No Side Seams For Non-Restricted Movement

Colors: Athletic Royal, Athletic Navy, Scarlet, Black, Maroon, Dark Green



DOUBLE DRY 4" COMPRESSION SHORT

2002BL Ladies': XS-2XL
2002BG Girls': S-L

- Body: 88% Polyester/12% Spandex
- Liner: 100% Polyester
- Inseam: Ladies' 4" | Girls' 2.75" (YS), 3.125" (YM), 3.375" (YL)
- Moisture-Wicking
- Exposed Soft Elastic "C" Logo Waistband For A Comfortable, Adjustable Fit
- Gusset For Full Range Of Motion
- No Side Seams For Non-Restricted Movement

Colors: Royal, Maroon, Red, Forest, Navy, Purple, Black



DOUBLE DRY 5" COMPRESSION SHORT

I5034BL Ladies': XS-2XL

- Liner: 100% Polyester
- Body: 88% Polyester/12% Spandex
- Inseam: 5"
- Moisture-Wicking
- Exposed Soft Elastic "C" Logo Waistband For A Comfortable, Adjustable Fit
- Gusset For Full Range Of Motion
- No Side Seams For Non-Restricted Movement

Colors: Athletic Royal, Scarlet, Athletic Navy, Black



DOUBLE DRY 7" COMPRESSION SHORT

I5000BL Ladies': XS-2XL
I5000BY Youth: S-L
I5000BG Girls': S-L

- Liner: 100% Polyester
- Body: 88% Polyester/12% Spandex
- Inseam: Ladies' 7" (XS-XL), 7.25" (2XL) | Youth 6" (YS), 6.5" (YM), 7" (YL) | Girls' 3.625" (YS), 4" (YM), 4.25" (YL)
- Moisture-Wicking
- Encased Elastic Waistband For A Comfortable, Adjustable Fit
- One-Piece Gusset That Extends From Hem To Hem For Full Range Of Motion (Youth)
- Gusset For Full Range Of Motion (Ladies' And Girls')
- No Side Seams For Non-Restricted Movement

Colors: Royal, Scarlet, Navy, Black

CHAMPION MADE COMPRESSION SHORT I

3" • C001BL | Ladies': XS-3XL

3" • C001BG | Girl's: XXS-L

4" • C002BL | Ladies': XS-3XL

4" • C002BG | Girl's: XXS-L

5" • C003BU | Adult: S-4XL

5" • C003BL | Ladies': XS-3XL

5" • C003BY | Youth: XS-XL

5" • C003BG | Girl's: XXS-L

7" • C004BU | Adult: S-4XL

7" • C004BL | Ladies': XS-3XL

7" • C004BY | Youth: XS-XL

7" • C004BG | Girl's: XXS-XL

9" • C005BU | Adult: S-4XL

9" • C005BL | Ladies': XS-3XL

9" • C005BY | Youth: XS-XL

• SpiritFlex™ 88% Polyester/12% Spandex

• 3" Inseam: Ladies' 3" | Girls' 2" (YXXS-YM), 2.5" (YL)

• 4" Inseam: Ladies' 4" | Girls' 2.25" (YXXS-YXS), 3.75" (YM), 4.25" (YL)

• 5" Inseam: Mens' 5" | Youth 3.5" (YXS), 4" (YS), 4.75" (YM), 5.5" (YL), 6.25" (YXL) | Ladies' 5" | Girls' 2.75" (YXXS-YXS), 4" (YS), 4.75" (YM), 5.25" (YL)

• 7" Inseam: Mens' 7" | Youth 5.5" (YXS), 6" (YS), 6.75" (YM), 7.5" (YL), 7.75" (YXL) | Ladies' 7" | Girls' 3.5" (YXXS), 4.75" (YXS), 6" (YS), 6.75" (YM), 7.25" (YL)

• 9" Inseam: Mens' 9" | Youth 6.5" (YXS), 7" (YS), 7.75" (YM), 8.5" (YL), 8.75" (YXL) | Ladies' 9"

• Moisture-Wicking

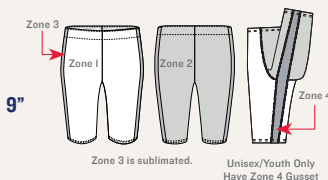
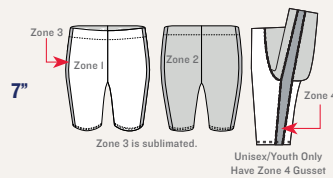
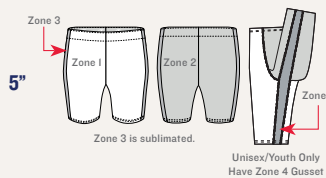
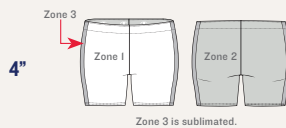
• Dyed Fabric Main Body

• Contrasting Insets Down The Sides For Customization

• Exposed Interior "C" Logo Elastic Waistband For Adjustable Comfort

• Gusset To Enable Full Range Of Motion

• Flat-Lock Seams To Eliminate Chaffing

CHOOSE YOUR TEAM LOOK
IN YOUR TEAM COLORS

Customize your ultimate volleyball look.



WHITE



BLACK



STEEL GREY



PURPLE



MAROON



RED



ORANGE



NAVY



ROYAL



COL. BLUE



FOREST



KELLY



ATH. GOLD



VEGAS GOLD



CARDINAL



CUSTOMIZE YOUR BRAID

Choose your braid by blending bold colors and patterns.



Braid 1



Braid 2



Braid 3



Braid 4



Braid 5



Braid 6



Braid 7



Braid 8



Braid 9



Braid 10



Braid 11



Braid 12

ASK ABOUT BRAIDS WITH A PATTERN!

\$5 upcharge per item for patterned braids.





ATTACKER



HYPER



PERIMETER



SPIKE

UF ELITE VOLLEYBALL JERSEY

U203TL

Ladies': XS-2XL

U203TG

Girl's: S-L

- Main Body: SpiritFlex Lite (88% Polyester, 12% Spandex)
- Inserts: Micro Mock Mesh (100% Polyester)
- Lower Arms: SpiritFlex™ (85% Polyester, 15% Spandex Knit)
- Moisture-Wicking And Odor-Resistant
- Self Fabric V-neck Collar That Fades Into Neckline For Non-Restrictive Movement
- Mesh Insets At Underarm And Lower Back For Targeted Ventilation
- Modified Raglan Sleeve For Ease Of Mobility
- Heavier Weight Fabric At Lower Arm For Added Shock Absorption
- Imported



CHAOS



MOTION

UF SHORT SLEEVE VOLLEYBALL JERSEY

U200TL

Ladies': XS-2XL

U200TG

Girl's: S-L

- SpiritFlex Lite™ (88% Polyester/12% Spandex)
- Short Raglan Sleeve
- V-Neck For Non-Restrictive Movement
- Self Fabric, 2-Ply Collar



EDGE



NIGHTFALL

UF LONG SLEEVE VOLLEYBALL JERSEY

U202TL

Ladies': XS-2XL

U202TG

Girl's: S-L

- SpiritFlex Lite™ (88% Polyester/12% Spandex)
- Long Raglan Sleeve
- V-Neck For Non-Restrictive Movement
- Self-Fabric, 2-Ply Collar



CIRCUIT



GALAXY



PRISM



REPLAY



SPACE DYE



SWIFT

UF SYNERGY SHORT

U102BL

Ladies': XS-2XL

U102BG

Girls': XXS-L

- SpiritFlex™ (88% Polyester/12% Spandex)
- Inseam: Ladies' 3" | Girls' 2.5"
- Curved Side Seams
- Exposed Soft Elastic Waistband For A Comfortable, Adjustable Fit



SUBLIME



PERIMETER

UF 3" COMPRESSION SHORT

U204BL

Ladies': XS-2XL

U204BG

Girls': S-L

- SpiritFlex™ (88% Polyester/12% Spandex)
- Inseam: Ladies' 3" | Girls' 2.75" (YS), 3.125" (YM), 3.375" (YL)
- Encased Elastic Waistband For A Comfortable, Adjustable Fit
- Double-Needle Hemmed Bottom
- No Side Seam For Non-Restricted Movement



HURDLE



WAVELENGTH

UF 4" COMPRESSION SHORT

U003BL

Ladies': XS-2XL

- SpiritFlex™ (88% Polyester/12% Spandex)
- Inseam: Ladies' 4"
- Moisture-Wicking
- Encased Elastic Waistband For A Comfortable, Adjustable Fit

WRESTLING





CHAOS



SETUP



SOLID



TAKEDOWN



TERMINATOR



TORQUE

UF WRESTLING SINGLET

U600TU

Adult: S-3XL

U600TY

Youth: S-XL

- 82% Polyester/18% Spandex
- Inseam: Adult 8" (S), 8.25" (M), 8.5" (L-XL), 8.75" (2XL-3XL) | Youth 5.75" (YS), 6.25" (YM), 6.75" (YL), 7.25" (YXL)
- Elastic Leg Opening With Silicone Grip Inside Of Leg
- Binding Around Armhole And Neck Opening
- Compression Style Fit



CHAOS



SETUP



SOLID



TAKEDOWN



TERMINATOR



TORQUE

UF WOVEN SPORT SHORT

U600BU

Adult: S-3XL

U600BY

Youth: S-XL

- Body: 100% Polyester
- Side Panels: SpiritFlex™ (88% Polyester/12% Spandex)
- Inseam: Mens' 9" | Youth 5" (YS), 6" (YM), 7" (YL), 8" (YXL)
- Encased Elastic Waistband With Faux Fly For A Comfortable Fit
- Stretch Side Panels For Comfort



SIZING

CHAMPION® MEN'S SIZING

	S	M	L	XL	2XL	3XL	4XL
CHEST	34 - 36	38 - 40	42 - 44	46 - 48	50 - 52	54 - 56	58 - 60
WAIST	28 - 30	32 - 34	36 - 38	40 - 42	44 - 46	48 - 50	52 - 54

CHAMPION® YOUTH SIZING

	YS (8)	YM (10-12)	YL (14-16)	YXL (18-20)
HEIGHT (INCHES)	50 - 51	55 - 58	62 - 64	67 - 68
WEIGHT	55.5 - 59	73.5 - 87	100.5 - 115	126.5 - 137
CHEST	27	28 - 29.5	31 - 32.5	34 - 35.5
WAIST	24.5	24.5 - 25.5	26.5 - 27.5	28.5 - 29.5

CHAMPION® WOMEN'S AND GIRLS' SIZING

	YM	YL	XS	S	M	L	XL	2XL
SIZE Numeric	7 - 8	10 - 12	0 - 2	4 - 6	8 - 10	12 - 14	16 - 18	20 - 22
BUST	26 - 27	28.5 - 30	32 - 33	34 - 35	36 - 37	38.5 - 40	41.5 - 43.5	45.5 - 47.5
WAIST	23.5 - 24.25	25 - 26	25 - 26	27 - 28	29 - 30	31.5 - 33.25	35 - 37.25	39.5 - 41.75
HIP	27.5 - 28.5	30 - 32	35 - 36	37 - 38	39 - 40	41.5 - 43	44.5 - 46.5	48.5 - 50.5

CHAMPION® SHOE & SOCK SIZING

	S/M	M/L
MEN'S Shoe Size	4 - 6	8 - 12
WOMEN'S Shoe Size	6 - 10	10 - 13

COLOR

Champion Athleticwear makes every effort to color match across the entire line. However, it is not possible to guarantee perfect color match due to the number of fabrics, textures, and dye lots in production.

HOW TO ORDER ULTRAFUSE SUBLIMATED STYLES

1. Choose your Sport & Style
 2. Choose your Design Pattern & Colors
 3. Choose your Decoration Placements and content. Including Font style and colors
- Call your sales rep or email us at CG-decorated@catalystbiz.com to place your order.

STOCK ART

We have thousands of templates available to customize and make unique to you. **NOTE:** Original Vector Art files (.ie or .eps) are required for production of team specific logos or mascots. If you cannot provide the original vector art, an additional fee of \$50 per hour will be charged to create that art.

CUSTOM ART

If you have a specific layout or design in mind, we can create that for you. Complex logos and artwork will incur an additional art charge of \$60. Original Vector Art files (.ie or .eps) are required for production. If you cannot provide the original vector art, additional charges will apply.

Our garments meet the NFHS Rules. However, all custom design choices are subject to customer approvals. Also, it is the customer's responsibility to ensure the design is legal for the league that it is intended for. Champion is not responsible for ensuring designs meet the league or school's specifications.

COLORS:

Scientifically, it is not possible to achieve a perfect color match from one dye lot to another. It is also not possible to achieve a perfect color match from one fabric type to another. Therefore, we will do our best to match the colors in your garments and decoration, but we cannot guarantee a perfect match.

PRODUCTION TIME

- Ships within 6-8 Weeks for Initial Order (from when art and credit have been approved)

* Art for approval will be sent to customer within 7 days after order is received by Champion.

Delays in approving may affect ship date.

** Note: Leadtimes may vary based on order volume, overall demand and capacity during peak periods.

RETURNS/SHORTAGES/CONCERNS:

Custom uniforms may not be returned under any circumstances if delivered properly. Claims for shortages or problems must be reported within 10 working days of merchandise receipt.

ORDER MODIFICATION OR CANCELLATIONS:

No changes can be made and orders cannot be cancelled once art and credit holds have been removed.

GUARANTEE:

The materials and workmanship of our garments are guaranteed when given fair treatment and used under normal conditions. Please refer to the Uniform Care Instructions for proper cleaning and storing of your custom uniforms. Champion will not be responsible for damage due to improper care and maintenance. Failure to follow our specified care instructions will void all guarantees.



To enhance the appearance and extend the life of your uniforms, we recommend that you follow these cleaning and storing procedures:

- Uniforms should always be laundered immediately after wearing. However, if this is not possible, rinse garments and hang individually on rust-proof hangers. (Moisture may cause color migration of acid dyes so we advise separating wet or damp uniforms.)
- Belts and any other contrasting color items should be washed separately from garment.
- It is always advisable to test wash a single uniform according to directions before washing an entire load.
- We recommend presoaking heavily soiled garments in cold water with a protein release agent. Follow the instructions recommended by the presoak manufacturer. Wash garments immediately following the presoak in normal wash cycle.
- Wash and rinse all garments in cold water with mild detergent. Remove promptly after wash cycle to avoid color migration.
- For optimum results, hang garments (especially those with spandex) to dry. If you cannot hang dry, machine dry on the lowest setting. Turn jerseys inside out before machine drying. Remove items from dryer immediately upon completion of cycle. (Excessive heat can cause fabric shrinkage, discoloration, and cracking and peeling of plastisol lettering inks.)
- Make sure uniforms are completely dry before storing. Store in a dry area to prevent mildew. Protect items from sunlight and fluorescent light to prevent yellowing.



DO NOT DRY CLEAN

DO NOT WASH IN HOT WATER

DO NOT USE CHLORINE BLEACH

DO NOT USE FABRIC SOFTENER

DO NOT WASH WHITES AND COLORS TOGETHER

DO NOT OVERLOAD THE WASHING MACHINE

DO NOT MACHINE DRY ON HIGH HEAT

**DO NOT LEAVE WET OR DAMP GARMENTS IN YOUR TRAVEL BAG,
IN A PILE WITH OTHER CLOTHING OR IN WASHING MACHINE**

Color Matching: Scientifically it is not possible to achieve a perfect color match from dye lot to dye lot, therefore we cannot guarantee a perfect match from order to order or fabric to fabric.



DECORATION OPTIONS



Screen Print

Screen Print

The process of printing a design on a product by forcing ink through a mesh screen. Traditionally this type of decoration is used on Tees, Tanks, Hoodies, and Sweatshirts.



Heat Transfer

Heat Transfer

Transfer material that is cut out and applied to a product using a heat press. Heat Transfer is typically used for uniform names, numbers, and graphics. However; due to its versatility, it can be used to decorate a wide range of products. Heat Transfer includes: Sport Grip, Fashion Film, Premium Glitter, Premium Flex, Rhinestones, And SequinDots®.



Embroidery

Embroidery

Decoration added to the garment through a needle and thread. Embroidery is usually used with left chest or full back decoration, and is a cost-effective way to customize a product.



Twill

Twill

Twill or applique is a process where letters, numbers, or logos are cut from material and then sewn onto a product. An adhesive backing tacks the material in place and the edges are sewn down with a zig-zag or satin stitch using a matching thread color.



UltraFuse
Sublimation

UltraFuse Sublimation

Dye sublimation is a two-step decoration process in which special ink is printed on transfer paper, and then is fed into a heat press along with the fabric where it permanently fuses the dye into the fibers of the fabric.

SMALL DESIGNS

Recommended Placements: Left Chest, Left Leg, Back Neck



T12-LG5
Two-color



T19-LC7
Two-color



T12-LG2
Two-color



T11-LC09
Two-color



T15-LC3
Two-color

BASEBALL



T11-LC02
Two-color



T11-LC06
One-color



T06-BS901
One-color

BASKETBALL



T14-LG23
Two-color



T11-LC01
Two-color



T14-LG9
Two-color

FOOTBALL



T11-LC16
One-color



T12-LG31
Two-color



T11-LC06
One-color

LACROSSE



T11-LC14
Two-color



T12-LG3
Two-color



T13-LC3
Two-color

SOFTBALL



T11-LC15
One-color



T19-LC12
Two-color



T13-LG31
Two-color

SOCCER



T08-LG601
One-color



T09-SC914
Two-color



T17-LC5
Two-color

TRACK



T13-LG1
Two-color



T13-LC17
Three-color



T13-LG36
Two-color

VOLLEYBALL



T11-LC07
Two-color



T15-LC5
One-color



T17-LC3
One-color

LARGE DESIGNS

Recommended Placements: Full Front, Full Back



T18-SP1
Two-color



T18-SP2
Two-color



T18-SP3
Two-color



T18-SP4
One-color



T19-CHI6
One-color

BASEBALL



T13-BT20
One-color



T16-TR2
Two-color



T17-BT5
Two-color

BASKETBALL



T11-BB2
Two-color



T15-BBI
Two-color



T16-CH52
Two-color

FOOTBALL



T13-FB5
Two-color



T14-BT32
Two-color



T14-FBI
Three-color

LACROSSE



T15-BTI
Two-color



T15-DN37
Two-color



T16-BDI
Two-color

SOFTBALL



T15-CH40
Two-color



T17-CHI7
Two-color



T17-CH46
One-color

SOCCER



T14-BT28
Two-color



T14-TR7
Two-color



T17-SRI
One-color

TRACK



T17-TR4
Two-color



T17-TR2
Two-color



T17-TR3
Two-color

VOLLEYBALL



T13-VB2
Two-color



T16-VB3
Two-color



T16-VB4
Two-color

SMALL DESIGNS

Recommended Placements: Left Leg, Left Chest, Back Neck



T11-FFLC5
One-color



T16-FFDN12
Two-color



T11-FFLC6
One-color



T12-SG11
Two-color



T19-SGLG1
Two-color

BASEBALL



T14-SG33
Two-color



T14-SGLG4
Two-color



T14-FFCHI5
Two-color

BASKETBALL



T14-SG34
Two-color



T14-SG32
Two-color



T17-SGLG06
Two-color

FOOTBALL



T11-FFLC12
Two-color



T15-FFLC1
Two-color



T12-SG13
Two-color

LACROSSE



T14-SG11
Two-color



T17-SGLC3
Two-color



T17-SGLC5
Two-color

SOFTBALL



T14-FFLC6
Two-color



T14-SGLG1
One-color



T15-SGLC1
Two-color

SOCCER



T11-FFLC8
One-color



T16-SGCH2
One-color



T17-SGSRI
Two-color

TRACK



T13-SGLG1
One-color



T12-SG22
Two-color



T13-FFLG5
One-color

VOLLEYBALL



T14-SG11
Two-color



T14-SG35
One-color



T14-SG36
Two-color

LARGE DESIGNS

Recommended Placements: Full Front, Full Back



T17-SGSP7
Two-color



T17-SGSP16
Two-color



T17-SGSP18
Two-color



T18-SGSP8
Two-color



T12-SG2
Two-color

BASEBALL



T12-SG1
Two-color



T13-SG1
Two-color



T17-SGGF1
Two-color

BASKETBALL



T12-SG15
Two-color



T17-SGCH4
Two-color



T13-SG3
Two-color

FOOTBALL



T17-SGSP9
Two-color



T17-SGSP21
Two-color



T17-SGTRI
Two-color

LACROSSE



T17-SGSP1
Two-color



T13-SG6
One-color



T15-SGCHI
Two-color

SOFTBALL



T15-SGSP3
Two-color



T16-SGCHI
Two-color



T18-SGSP5
Two-color

SOCCER



T13-SG7
Two-color



T14-SG4
Two-color



T14-SG5
Two-color

TRACK



T17-SGSP22
Two-color



T17-SGTR4
Two-color



T17-SGTR6
Two-color

VOLLEYBALL



T13-SGCH2
Two-color



T16-MXCH2
Two-color



T17-SGTR5
Two-color

SMALL DESIGNS

Recommended Placements: Left Chest, Left Leg, Back Neck



E1750



E16113



E0617



E1011



E1356

BASEBALL



E17108



E0409



E1314

BASKETBALL



E0403



E1010



E14145

FOOTBALL



E13179



E13128



E14218

LACROSSE



E1319



E1746



E04092

SOFTBALL



E1699

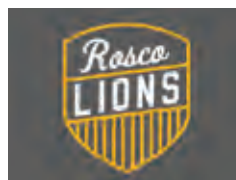


E14280



E14266

SOCCER



E15129



E13130

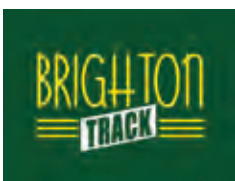


E13175

TRACK



E14215

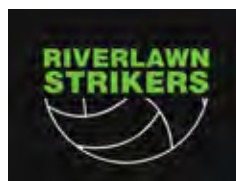


E14300



E1809

VOLLEYBALL



E16136



E16142



E1369

LARGE DESIGNS

Recommended Placements: Full Front, Full Back



E13246



E1571



E1605



E13257



E16104

BASEBALL



E0870



E1351



E2010

BASKETBALL



E13134

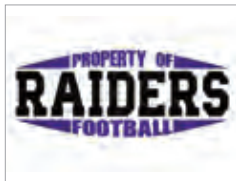


E1219



E13194

FOOTBALL



E0869



E13128



E0414

LACROSSE



E2022



E0681



E0868

SOFTBALL



E0411



E1237



E2016

SOCCER



E0413



E0865



E2018

TRACK



E2019



E2017



E1016

VOLLEYBALL



E1030



E0686



E0680

SMALL DESIGNS

Recommended Placements: Left Chest, Left Leg, Back Neck



EI4279



EI5159



EI5163



EI5166



EI7137

BASEBALL



EI768



EI7123



EI7125

BASKETBALL



EI770



EI785



EI787

FOOTBALL



EI3126



EI735



EI820

LACROSSE



EI759



EI7138



EI8134

SOFTBALL



EI709



EI731



EI767

SOCCER



EI777



EI790



EI7106

TRACK



EI7144



EI7145

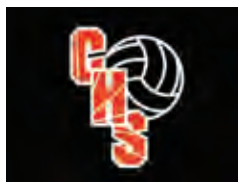


EI7146

VOLLEYBALL



EI4331



EI7121



EI7142

LARGE DESIGNS

Recommended Placements: Full Front, Full Back



E1600



E15176



E16100



E1053



E16101

BASEBALL



E1291



E17116



E14315

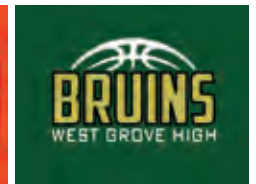
BASKETBALL



E1727



E13139



E1432

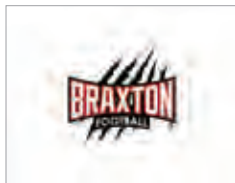
FOOTBALL



E1708



E1411



E1512

LACROSSE



E1104



E17129



E1600

SOFTBALL



E15148



E16150



E14254

SOCCER



E1557

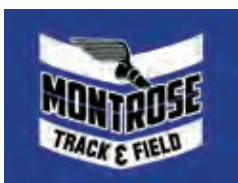


E1529



E1789

TRACK



E1559



E16123



E17144

VOLLEYBALL



E1352



E1523



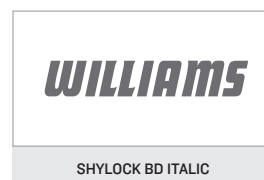
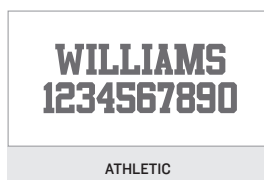
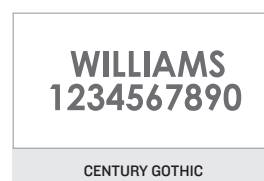
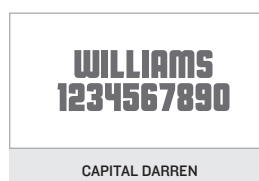
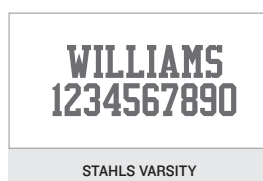
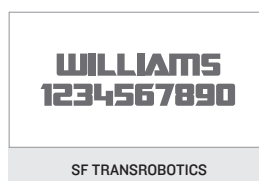
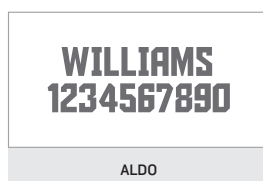
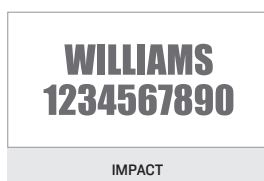
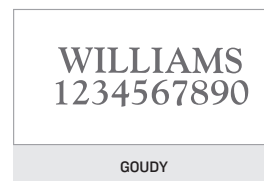
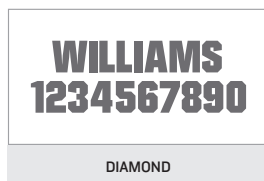
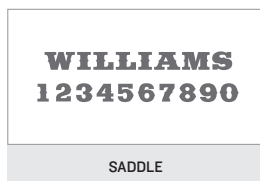
E1679

ORDERING & DECORATION | NAMES & NUMBERS

Sport Grip



Fashion Film



Sizes: 1", 2", 2.5", 3", 4", 6", 8", 10", 12"

More name and number options available online.

Styles:

Straight

Arch

Slant

COUGARS

COUGARS

COUGARS

Arch Lower

Arch Upper

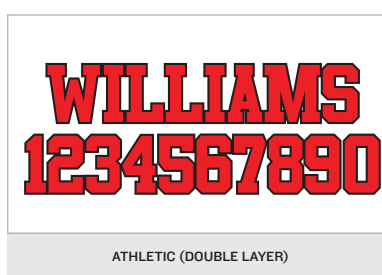
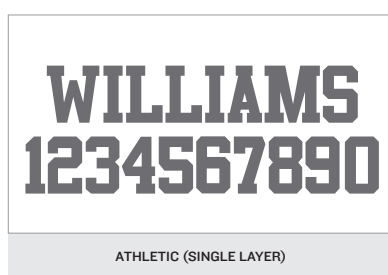
Bowtie

COUGARS

COUGARS

COUGARS

Twill



Sizes:
2", 4", 6", 8", 10"

Styles:
Straight

COUGARS

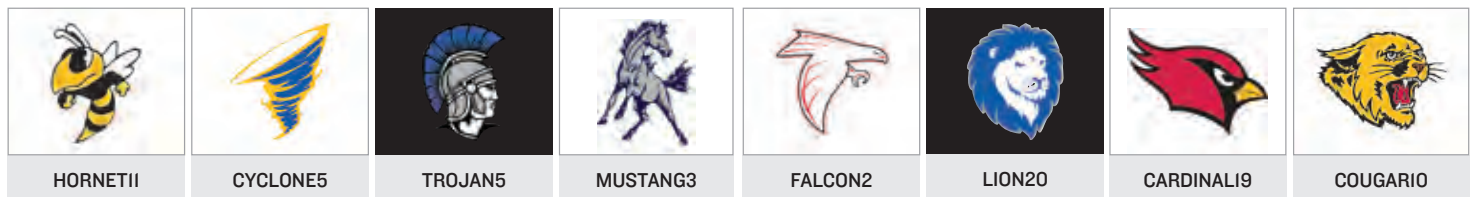
EMBROIDERY

More embroidery personalization options available online.



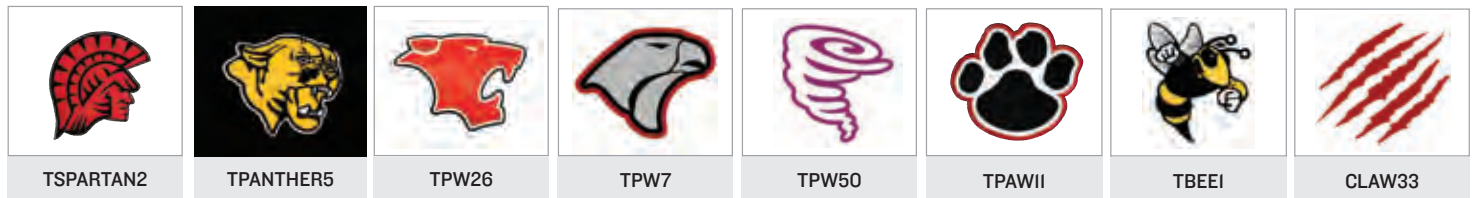
STANDARD MASCOTS

Recommended Placements: Left Chest, Left Leg, Back Neck



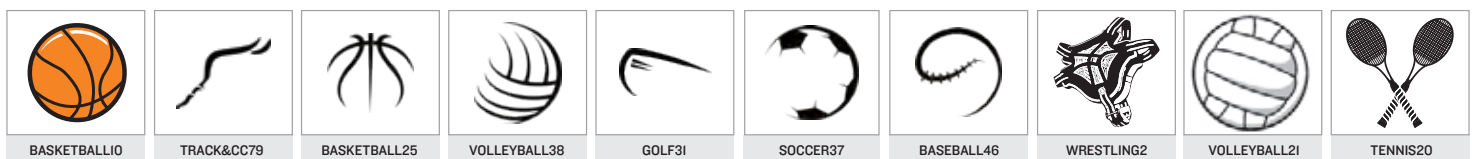
TWILL MASCOTS

Recommended Placements: Left Chest, Left Leg, Back Neck



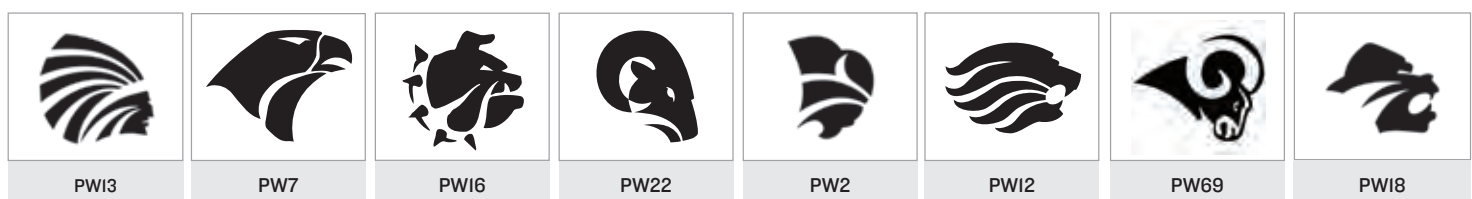
SPORTS ICONS

Recommended placement: Left Chest, Left Leg, Back Neck



POWERLINE MASCOTS

Recommended placement: Left Chest, Left Leg, Back Neck



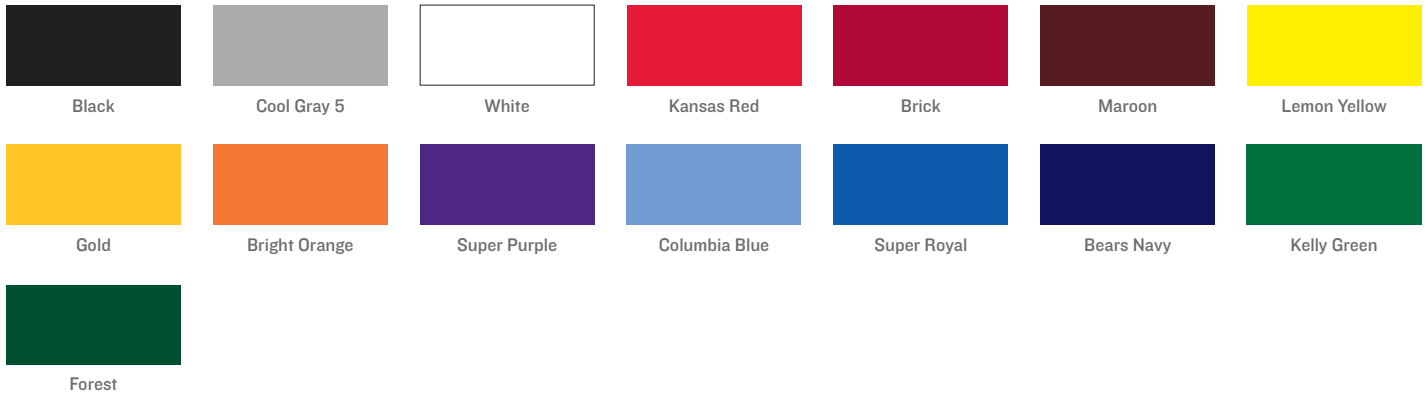
SCREEN PRINT COLORS

						
White	Cool Gray 5	Cool Gray II	Black	Dark Brown	Genesis Purple	Super Purple
						
Maroon	Strawberry	Bubblegum Pink	Andean Pink	Dolphin Orange	National Red	Lavender Mist
						
Texas Orange	Lemon Yellow	Light Gold	Sky Blue	Super Bright Blue	Super Royal	Brandywine
						
Bears Navy	Deep Aqua	Turquoise	Black Light Green	Kelly Green	Forest Green	Blue Jewel
						
Blaze Yellow	Metallic Purple	Metallic Black	Metallic Silver	Metallic Gold	Metallic Royal	Metallic Green
						
Fl. Red	Fl. Magenta	Fl. Pink	Fl. Yellow	Atomic Green	Jungle Green	Citrus
						
Hot Coral	Sea Green					

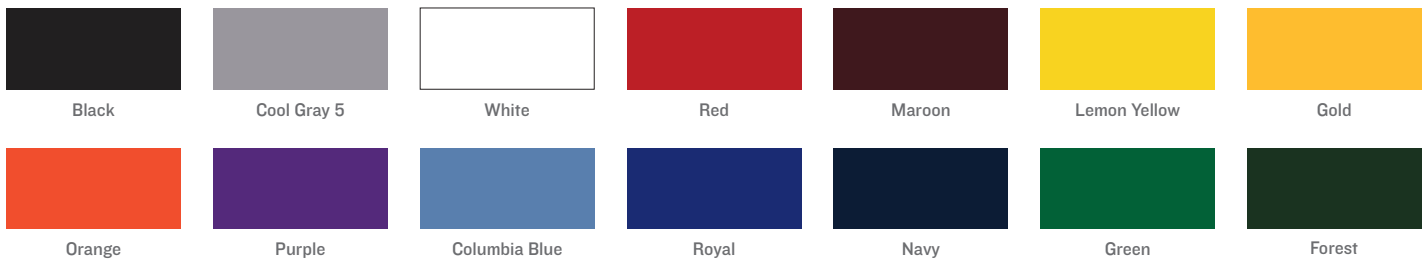
TWILL COLORS

						
Hot Pink	Lime	Black	Purple	Lilac	Forest	Kelly
						
Navy	Royal	Maroon	Cardinal	Orange	Maize	Texas Orange
						
Steel Grey	Teal	Columbia Blue	Red	Light Gold	Vegas Gold	White
						
Light Pink	Brown	M. White	M. Silver	M. Gold		

SPORT GRIP COLORS



PREMIUM FLEX COLORS



EMBROIDERY COLORS



ULTRAFUSE™

CONTACT OUR KNOWLEDGEABLE STYLE CONSULTANTS
TO CREATE A CUSTOM, COMPLIANT UNIFORM.

1

PICK YOUR PRODUCT AND DESIGN

Start with the product that's right for your team. Call a consultant to select your compliant uniform.



2

CHOOSE YOUR COLORS

Represent your team with your school colors. Choose from more than 40 options.



3

MAKE IT PERSONAL®

Add your team logo and number at no extra cost! We will work with you to ensure your art is compliant.





ENDLESS POSSIBILITIES

MULTIPLE STYLES TO FIT YOUR NEEDS

UltraFuse™ allows you to choose from dozens of designs to customize with your team colors and artwork at no extra cost.

ULTRAFUSE™

ULTRA PERFORMANCE • ULTRA COLOR • ULTRA YOU • ULTRA TEAM

ART IS INCLUDED AT NO EXTRA COST!

ULTRAFUSE™ MAX

Select your favorite uniform, warm-up, or training gear. Customize it with your choice of vivid colors and patterns from UltraFuse™ Max.

1

PICK YOUR PRODUCT Start with the product that's right for your team.



Track Uniforms



Volleyball Uniforms



Basketball Uniforms



Warm-Ups

CALL A REP FOR FULL SELECTION OF PRODUCTS

2

CHOOSE PATTERNS & COLORS Fill the zones with patterns or solid colors.



3

MAKE IT PERSONAL® Add your team logo or name at no additional cost.





ULTRAFUSE™ COLORS



Champion White



Champion Black



Champion Steel Grey



Champion Stone
Grey



Champion Graphite



Champion Brown



Champion
Maroon



Champion
Cardinal



Champion Red



Champion Blaze



Champion Texas
Orange



Champion
Orange



Champion Hot Coral



Champion Neon
Orange



Champion Citrus



Champion
Athletic Gold



Champion Yellow



Champion Light
Yellow



Champion
Caramel



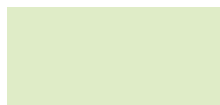
Champion
Vegas Gold



Champion Neon
Yellow



Champion Atomic
Green



Champion Honey
Dew



Champion Mint



Champion Lime



Champion Neon
Green



Champion Sea Green



Champion
Kelly



Champion
Jungle Green



Champion Army
Green



Champion Forest



Champion Navy



Champion Royal



Champion Neon Blue



Champion
Columbia Blue



Champion
Electric Blue



Champion
Teal



Champion
Turquoise



Champion Pale Blue



Champion
Lavender Mist



Champion
Lilac



Champion
Amethyst



Champion Purple



Champion Grape



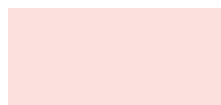
Champion WOW
Pink



Champion Neon Pink



Champion
Electric Pink



Champion Blush



Champion Dusty
Rose



Champion Beige



Champion Mocha

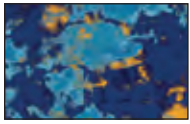


Champion Cargo
Olive

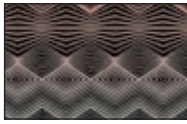


Champion French
Navy

ULTRAFUSE™ MAX PATTERNS



Tie-Dye



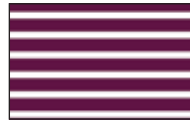
Optic



Geo Fusion



Memphis Retro



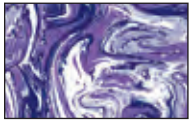
Stripes



Modern Camo



Mistify



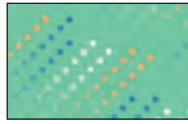
Marble



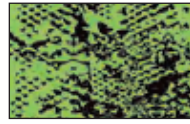
Web



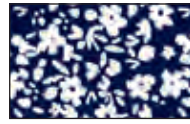
Space Dye



Rain



Snake Print



Floral Splash



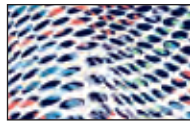
Fringe



Digital Camo



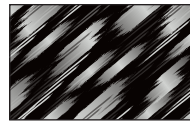
Kaleidoscope



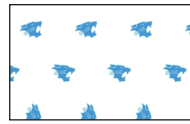
Color Surge



Optic Edge



Brushstroke



Mascot



Spirit Text



Mach5



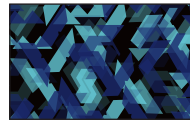
Diamond Plate



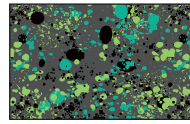
Swiss Dot



Gradient



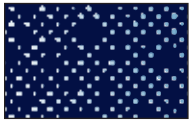
Geo



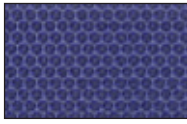
Splatter



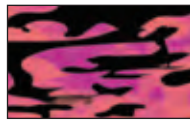
Mist



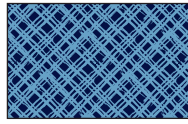
Galactic



Chain Reaction



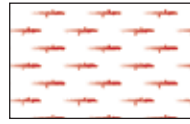
Soft Camo



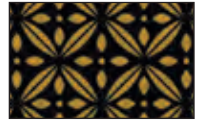
Latitude



Stellar



Champion Fade



Jazzy



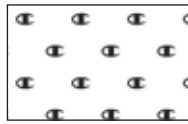
Solid



Stone Wash



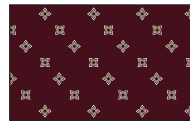
Tidal Wave



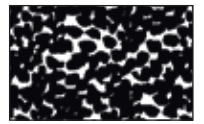
Mini C



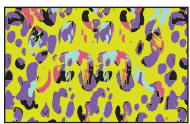
Confetti



Iconic



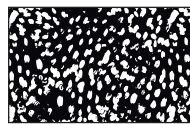
Spot



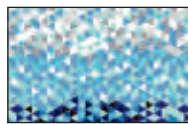
Party Animal



Tropicool



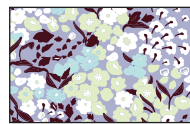
Wild Side



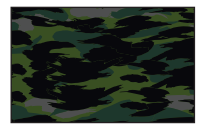
Crystal



Floral Brush



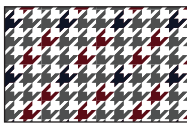
Botanical



Urban Camo



Frequency



Houndstooth



Groovy



Shutter



Paisley



Tropical Lush



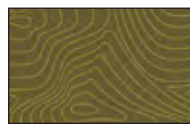
Coastal Vibes



Lost In Paradise



Palm Beach



Textured Nature



official dealer - distributeur officiel

Contact us for **TEAM** pricing

Communiquez avec nous pour le prix d'**ÉQUIPE**

info@vsp.net