



**#1 IN SERVICE  
#1 IN ASSORTMENT  
#1 IN PRICE**

CONTINUE TO STREAMLINE

- PROGRAMS
- PRODUCTS
- PRICING

# PAST PROBLEMS = OVER COMPLICATION

## 2022 SOLUTION

- Offer best terms for partnership up front
- Switching +240 accounts to B2B one time order
- One price for each account and one best discount when they pay
- +240 accounts move to booking only
- Streamlined game basketballs & footballs

## 2023 PLAN

- Continue to move forward with the 2022 plan with the priority to service accounts with a best-in-class experience
- Same program and offering with a few product additions

OPPORTUNITY = CONTINUE TO TRANSFORM, STREAMLINE AND SERVICE

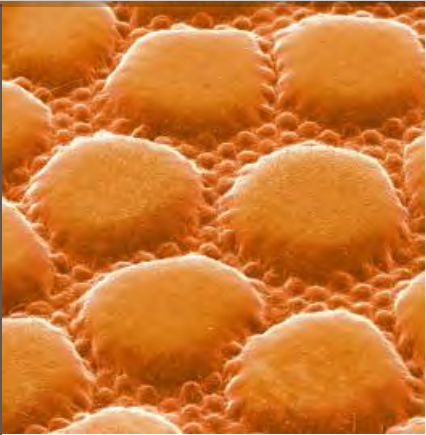
**VISION:**  
**GLOBAL LEADING PREMIUM  
SPORTING GOODS COMPANY**



**DEALER PRODUCT  
BASKETBALL**



GAME BASKETBALLS  
**NCAA EVO NXT**



**EXTENDED RANGE TECH.**

Optimally balanced, super soft core construction generates more spin with less effort at any range and a softer touch around the rim.

**SUPER SOFT CORE**

Extra cushioning allows your fingers to dig deeper into the surface for better control and a softer feel, helping every player find the shooters touch.

**NCAA OFFICIAL**

Play with the official ball of NCAA and March Madness

**Size 7 / 6**







GAME BASKETBALLS

**EVOLUTION**



**#1 INDOOR BALL**

The Evolution is the #1 indoor game basketball in America, on more courts than any other basketball. Featuring Premium Evo Microfiber

**SIGNATURE FEEL**

The soft feel is due it's Cushion Core Carcass, making the ball softer to the touch and easier to grip around the rim

**ULTIMATE CONTROL**

Composite pebbled channels create consistent surface texture that displace moisture and enhance grip for unparalleled control

**Size 7 / 6 / 5**

**CCAA / USPORTS**

GAME BASKETBALLS  
**NBA AUTHENTIC  
INDOOR  
GAME BALL**



**PURE FEEL MICROFIBER**

Greater softness provided better grip, enhanced feel and ball control

**EVER BOUNCE  
CONSTRUCTION**

Consistent bounce every time

**PERFORMANCE GAME  
BALL LINING**

Specialized bladder construction provides the highest quality air retention

**NBA PRO SEAMS**

New channel construction suited to player preference

**Size 7 / 6**



GAME BASKETBALLS

**3x3 GAME BALL**



**FIBA 3X3 OFFICIAL**

Approved to FIBA 3x3 specifications, official game ball of FIBA 3x3 Basketball

**WAVE TECH**

Triple Threat Tech. uses grooves in the ball's surface to maximize easy to find grip points

**ELEVATE GRIP**

Pebbled Channels give 100% surface coverage of pebbling for maximized grip points

**FIBA 3X3 SPEC**





# GAME BASKETBALLS

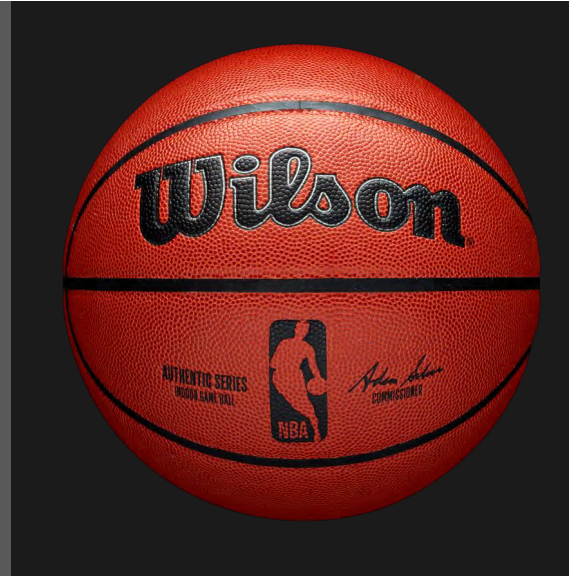
NCAA EVO NXT



EVOLUTION



JR. NBA GAME BALL



FIBA 3X3 GAME BALL



INDOOR | OUTDOOR  
**NBA AUTHENTIC**  
INDOOR |  
**OUTDOOR**



**PURE FEEL COVER**

Pro-level feel and durability

**EVER BOUNCE CONSTRUCTION**

Consistent bounce every time

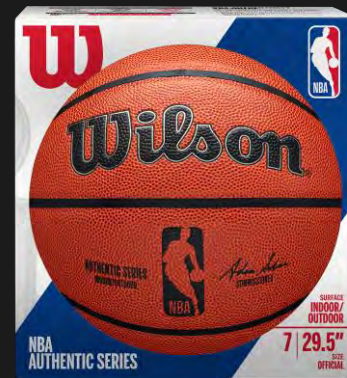
**AIR RETENTION**

Inflation retention lining creates longer-lasting air retention

**NBA PRO SEAMS**

New channel construction suited to player preference

**SIZES 7/6**





INDOOR | OUTDOOR  
**NBA TEAM  
ALLIANCE  
TORONTO  
RAPTORS**



**PURE FEEL COVER**

Pro-level feel and durability

**MATCHING LOGO COLORS**

Matching Wilson and team logo colors with NBA Team wordmark and primary logo

**AIR RETENTION**

Inflation retention lining creates longer-lasting air retention

**NBA PRO SEAMS**

New channel construction suited to player preference

**SIZES 7**



LEGEND SERIES  
**NCAA LEGEND**



**INNOVATIVE GRIP**

Deeper rubber channels constructed for improved grip that you can sink your fingertips into, delivering crisp passes and smooth shots

**SIGNATURE FEEL**

Soft touch composite cover for that quality feel that flows right off your fingers

**SEASON-LONG  
DURABILITY**

A premium core construction delivers consistent rebound and a soft feel every game

**SIZE 7/6/5**





# INDOOR | OUTDOOR

NBA INDOOR | OUTDOOR



NCAA LEGEND



NBA TEAM ALLIANCE



# OUTDOOR NBA AUTHENTIC OUTDOOR



## TACKSKIN COVER

New cushion layer offers ultimate grip in all weather conditions

## OUTDOOR DURABILITY

Designed for ultimate outdoor durability

## AIR RETENTION

Inflation retention lining creates longer-lasting air retention

## NBA PRO SEAMS

New channel construction suited to player preference

## SIZES 7

# OUTDOOR WNBA AUTHENTIC OUTDOOR



## TACKSKIN COVER

New cushion layer offers ultimate grip in all weather conditions

## OUTDOOR DURABILITY

Designed for ultimate outdoor durability

## AIR RETENTION

Inflation retention lining creates longer-lasting air retention

## FIRE & WHITE

Signature WNBA Fire & White colored panels

## SIZES 6





# OUTDOOR NBA TEAM TRIBUTE TORONTO RAPTORS



## PERFORMANCE COVER

Outdoor cover designed for grip on rough surfaces

## OUTDOOR DURABILITY

Designed for ultimate outdoor durability

## AIR RETENTION

Inflation retention lining creates longer-lasting air retention

## TEAM COLORS

Features alternating Toronto Raptors primary and secondary team colors and Official NBA branding

## SIZES 7

OUTDOOR  
NBA ICON  
SCOTTIE BARNES



**PERFORMANCE COVER**

Outdoor cover designed for grip on rough surfaces

**OUTDOOR DURABILITY**

Designed for ultimate outdoor durability

**AIR RETENTION**

Inflation retention lining creates longer-lasting air retention

**SCOTTIE BARNES**

Design contains Scottie Barnes likeness, silhouette, number and design

**SIZES 7**

OUTDOOR  
**NBA DRV**



**PERFORMANCE COVER**

Outdoor cover designed for grip on rough surfaces

**OUTDOOR DURABILITY**

Designed for ultimate outdoor durability

**AIR RETENTION**

Inflation retention lining creates longer-lasting air retention

**NBA PRO SEAMS**

New channel construction suited to player preference

**SIZES 7/6/5**





# OUTDOOR JR. NBA DRV FAMILY



## PERFORMANCE COVER

Outdoor cover designed for grip on rough surfaces

## OUTDOOR DURABILITY

Designed for ultimate outdoor durability

## AIR RETENTION

Inflation retention lining creates longer-lasting air retention

## JR. NBA FAMILY

Utilizes the Jr. NBA Family logo that contains the NBA Logoman and WNBA Logowoman

## SIZES 7/6/5



OUTDOOR  
**NCAA ELEVATE**



**ALL-COURT  
PERFORMANCE**

Durable all surface cover makes this ball suitable for indoor and outdoor play.

**EXTENDED DURABILITY**

A premium internal all-surface construction provides excellent long-term durability and bounce

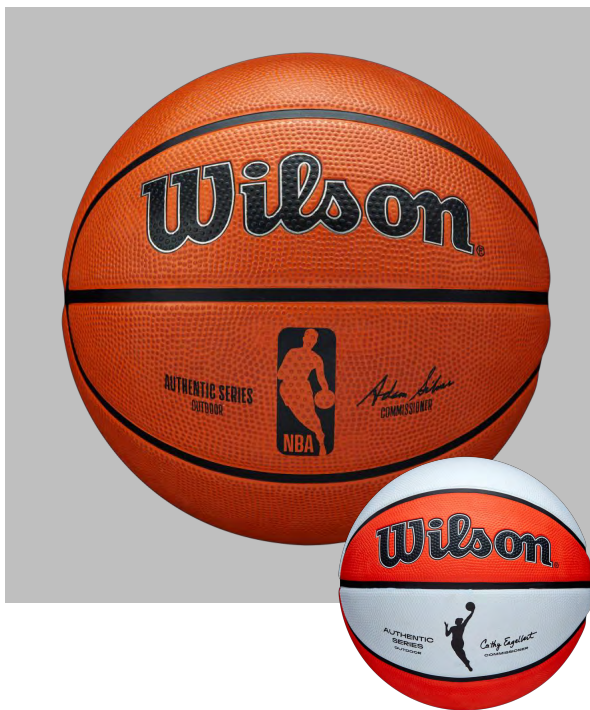
**AUTHENTIC BRANDING**

Marked with the official Wilson script logo and NCAA logo.

**SIZES 7/6/5**

# OUTDOOR

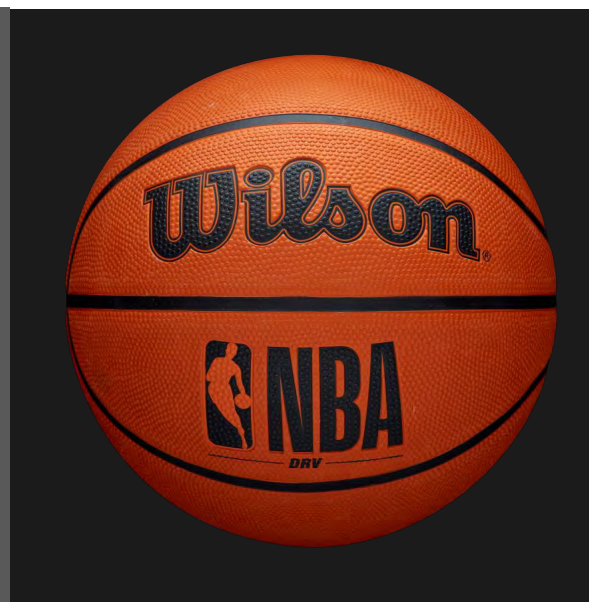
AUTHENTIC OUTDOOR



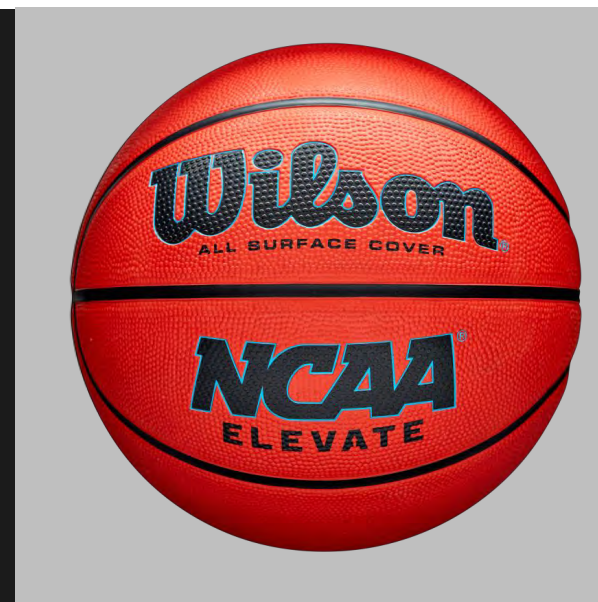
TEAM TRIBUTE



NBA DRV



NCAA ELEVATE





BASKETBALL BAGS

## NBA AUTHENTIC SERIES



### SPACIOUS STORAGE

Large main compartment that fits any size basketball

### PREMIUM MATERIAL

Coated fabric material for increases durability and resist water

### SHAPE & BUILD

Specifically engineered for maximum comfort while carrying a basketball along with adjustable Foam padded shoulder strap and backing

### TECH ADAPTED

Easy access phone and accessory zipper pocket located on the top of the bag

# BASKETBALL BAGS

## NBA DRV



### SPACIOUS STORAGE

Large main compartment that fits any size basketball



### COMFORT CARRY

Drawstring cord and padded shoulder straps for easier transport of a basketball



### WATER BOTTLE

Outside water bottle holder for easy transport



### DRV DESIGN

Signature NBA DRV colors and design

**Wilson®**

**DEALER CUSTOM  
BASKETBALL**



# GAME BALLS DIRECT PRINT CUSTOMIZATION



**45 Day Lead Time**  
**6 Ball Minimum**  
**Evolution / NCAA Evo NXT**

**Full Color Direct Print Logo's**

**Wilson®**

**DEALER PRODUCT  
FOOTBALL**







NFL SERIES

**NFL “THE DUKE”  
OFFICIAL GAME  
BALL**



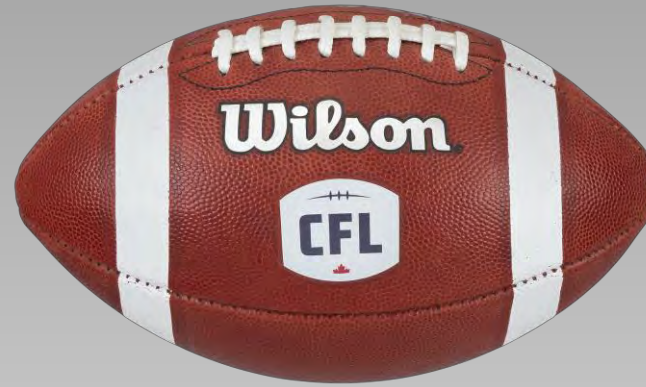
**NFL OFFICIAL GAME BALL**  
"The Duke" NFL Football is the official ball of the NFL, featuring the world famous Blue, Red, and Silver shield

**SINCE 1941**  
Wilson and the NFL have the longest official ball partnership in sports, on-field together since 1941

**HANDCRAFTED IN THE US**  
Made from 100% exclusive Horween leather by Wilson's skilled craftsmen and women in Ada, Ohio

# LEATHER FOOTBALLS

## **CFL OFFICIAL GAME BALL**



### **CFL OFFICIAL GAME BALL**

Official Game Ball of the Canadian Football League since 1995

### **AUTHENTIC WILSON**

The Wilson trademark "W" is pressed into every panel of Wilson CFL leather used to make official CFL game balls

### **HANDCRAFTED IN THE US**

Made from 100% exclusive Horween leather by Wilson's skilled craftsmen and women in Ada, Ohio







LEATHER  
FOOTBALL  
**GST LEATHER  
GAME BALL**



**MODERN DESIGN:**  
A New visual design combines signature GST performance with a New-look for a New generation of talent.

**LIGHT LEATHER FORMULA:**  
Wilson's Light Leather Formula is the softest football leather on the market, with a unique feel that's easier for your fingers to sink into for more control.

**PINTPOINT ACCURACY:**  
Patented sewn-on stripes are composite material instead of paint, and provide 82% more grip to aid release for more accurate throws.

**UNRIVALED CONTROL:**  
Patented Accurate Control Lacing (ACL), which is pebbled instead of smooth, provides 174% more grip in all conditions

**OUA / U-SPORTS**



# LEATHER GAME BALLS

NFL



CFL



GST





GAME BALL  
**GST COMPOSITE**



**W GRAPHICS:**  
Marked with official “W” logo branding that ties into the new GST Leather Game ball line

**UNRIVALED CONTROL:**  
Patented Accurate Control Lacing (ACL), which is pebbled instead of smooth, provides 174% more grip in all conditions.

**COVER MATERIAL:**  
The highest grade microfiber cover provides excellent durability and pebble definition for enhanced grip

**SEWN STRIPES:**  
Two Black Seam bordered Stripes of patented composite material, giving extra grip points



GAME BALL

# HYLITE

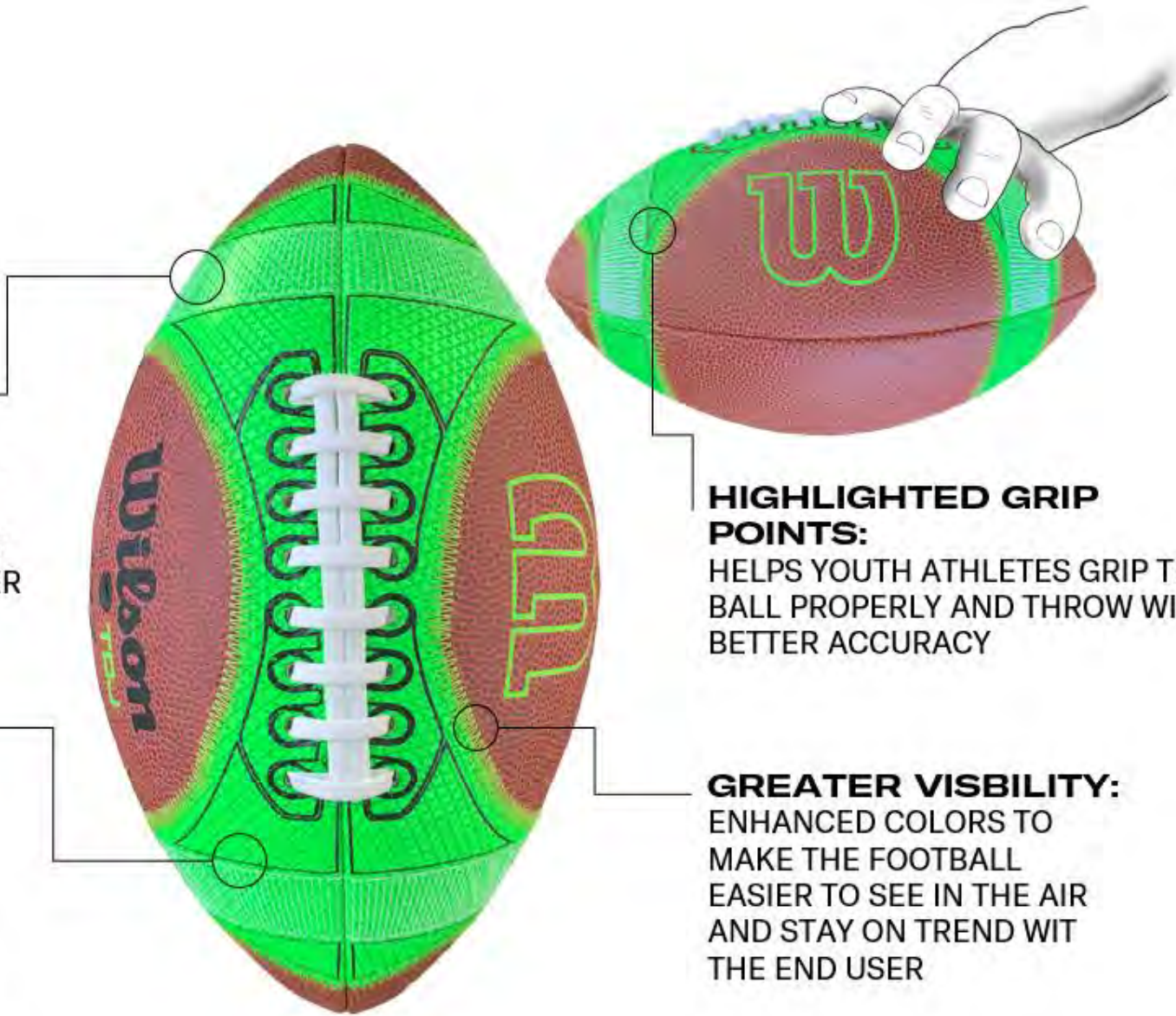
GAME BALL

**SOFTER FEEL:**

USING A LAYER OF SOFTER COMPOSITE WITH A BRIGHTER COLOR AND GRAPHICS TO ELIMINATE FEAR OF CATCHING AND EASE OF USE FOR SMALLER HANDS

**INSTRUCTIONAL TOOL:**

USING COLOR AND PINPOINTED GRAPHICS COACHES CAN USE THIS BALL TO INSTRUCT PROPER HAND PLACEMENT FOR THROWING AND CATCHING DURING PLAY



**HIGHLIGHTED GRIP POINTS:**

HELPS YOUTH ATHLETES GRIP THE BALL PROPERLY AND THROW WITH BETTER ACCURACY

**GREATER VISIBILITY:**

ENHANCED COLORS TO MAKE THE FOOTBALL EASIER TO SEE IN THE AIR AND STAY ON TREND WIT THE END USER

# GAME BALL NEW HYLITE GAME BALL



## **W BRANDING**

Iconic W branding representing innovation in the football category

## **HIGHLIGHTED GRIP POINTS:**

Helps young athletes grip the ball properly and throw with better accuracy.

## **GREATER VISIBILITY:**

Enhanced colors makes the footballs easier to see through the air

## **SOFTER FEEL:**

For better grip and easier catchability

**Yth / Jr / PW**



NFL SERIES

**NFL “THE DUKE”  
REPLICA**



**NEW LOGO**

Silver, Red, Blue NFL Shield to celebrate the next 101st season and beyond

**PERFORMANCE COVER**

Features a high-performance composite to match the original’s feel and excellence.

**SEWN CONSTRUCTION**

The durable composite cover allows for extended durability and all-weather performance.

**METALLIC COMPOSITE**

The Wilson Duke Metallic Edition decorates a classic with a stunning silver finish



# IGNITION SERIES

## IGNITION



### DURABLE PERFORMANCE

Intended for rec use, the durable composite cover allows for extended durability and all-weather performance

### DISTINCTIVE COLOR

Color options in both the traditional brown football but also royal blue colorway with Gold Accents

### NFL LACE

Dual lace developed for modern NFL Game to play like the pro's

### NFL OFFICIAL

Wilson is the official partner of all NFL balls

# CFL SERIES

## CFL REPLICA



### **CFL OFFICIAL**

Official Replica football of the CFL

### **PERFORMANCE COVER**

Features a high-performance composite to match the original's feel and excellence.

### **SEWN CONSTRUCTION**

The durable composite cover allows for extended durability and all-weather performance.

### **STAYS INFALTED**

A butyl rubber bladder provides excellent long term air retention to keep your ball from going flat

# CFL SERIES

## CFL MVP



### **VERSATILE**

A proper fit for fans of any age playing on any surface

### **BRANDED GRAPHICS**

Marked with the official CFL logo

### **CFL OFFICIAL**

Wilson is the official partner of all the CFL

**CLASSIC COLOR:** CFL leather red that informs a classic look and feel from the roots of Wilson's traditional football

FOOTBALL  
**FOOTBALL PREP**



**PREP KIT**



**GAME BALL  
BRUSH**



**8oz  
CONDITIONER**



**4oz TACK SPRAY**



**Wilson<sup>®</sup>**

**DEALER CUSTOM  
FOOTBALL**

## CHOOSE YOUR LOGO STYLE

①

### NEW METALLIC STAMP

Full color customization  
(40+ colors) available.



②

### LASER

Black line logo and/or  
black text only,  
no colors available



Custom: Stock GST + Logo (no decal)  
U-Sports and OUA will use GST Classic WTB1233

**Wilson®**

**DEALER PRODUCT  
VOLLEYBALL**





AVP SERIES  
**OPTX**  
**GAME BALL**



**SUPERIOR SPIN DETECTION**

VST™ uses color variance to allow easier spin detection and ball tracking in the dynamic and diverse environments of beach volleyball

**DURABLE CONSTRUCTION**

The same hand-crafted construction that the AVP volleyball is known for keeps a consistent shape and feel of the ball on every touch

**BUILT FOR THE BEACH**

Designed specifically for the beach game and it's players, re-imagining what a beach volleyball should look like

**AFFILIATION APPROVED**

AVP Official Game Ball, NCAA Official Game Ball, FIVB Approved for international competition

# GRAPHIC FOCUS: OPTX VST MINIMIZED



# THE NAME



Using one word, ARX, allows separation from the OPTX. It calls out that this ball is not only different than the OPTX but was made for that mid to lower level player athlete. It's their ball. OPTX stays premium while ARX continues the franchise.

---

ARX, meaning focal in Latin, keeps technology at the forefront of the game ball and continues the use of the letter "X" that pays tribute to the OPTX game ball but focuses on the boldness of the mid-level player.

AVP SERIES  
**ARX GAME  
BALL**



**HAND CRAFTED**

Superior hand-crafted construction that Wilson’s volleyball is known for keeps a consistent shape and feel with every touch

**SUPERIOR SPIN  
DETECTION**

VST uses color variance to allow easier spin detection, so you can read and react to where the game is going

**TIMELINE:**

Wilson.com/Player Seeding: July 2021

AVP League Play: Summer/Fall 2021

Retail Launch: January 2022





AVP SERIES  
**OPTX AVP**  
**REPLICA**



**ENHANCED BALL TRACKING:**

The vibrant color palette and Optic Flow graphics allow for better ball tracking in the dynamic and diverse environments of beach volleyball

**DURABLE CONSTRUCTION**

The same hand-crafted construction that Wilson's AVP volleyball is known for keeps a consistent shape and feel of the ball on every touch

**SUPERIOR SPIN DETECTION:**

VST™ uses color variance to allow easier spin detection, so you can read and react to where the game is going

**AVP OFFICIAL:**

Wilson is the official volleyball of the AVP Tour



# GAME BALL SERIES

**AVP OPTX**



**AVP ARX**



**AVP OPTX REPLICA**



# AVP SERIES

## AVP MOVEMENT



### BUILT FOR THE BEACH

Take the beach in style with this vibrant volleyball inspired by coastal culture

### 18-PANEL CONSTRUCTION

18-panel, machine-sewn construction helps the ball keep an optimal round shape, game after game

### ENHANCED AIR RETENTION

Butyl rubber bladder for extended air retention

### OFFICIAL SIZE AND WEIGHT



AVP SERIES

**AVP SOFT PLAY**



**SOFTER FEEL**  
Sponge-backed synthetic leather cover creates a super-soft feel on every touch

**ENHANCED DURABILITY**  
18-Panel, machine-sewn construction for durability that lasts for hours upon hours of play

**RECREATIONAL PLAY**  
The soft feel and great durability make this the perfect ball for playing in the backyard, park, or beach



# VOLLEYBALL CANADA

GAME BALL



REPLICA



**Wilson<sup>®</sup>**

**DEALER INDOOR**

# K1 SERIES

## K1 SILVER



### SOFT TOUCH

Composite Leather cover provides a softer feel for intense training sessions or for younger players looking for softer impacts.

### K1 PERFORMANCE

The K1 is designed to keep players from holding back, so that they can play to their potential with every touch.

### HARNESSES KINETIC ENERGY

The internal command lining enables players to evoke more power and velocity through the transfer of kinetic energy, enabling stronger kills.

# INDOOR SERIES

## PRO TOUR



### EXTENDED DURABILITY

A durable, wound carcass construction helps the ball keep an optimal round shape, match after match.

### INDOOR PERFORMANCE

Designed with an upgraded material construction ideal for indoor play.

### PERFECT TOUCH

The high-performance synthetic leather cover allows you to better the ball with every touch.



# INDOOR SERIES **STANDARD KNEE PADS**



## **CUSHION FIT**

Cushioned PU foam for shock absorption

## **MACHINE WASH**

Easily clean knee pads

## **ADVANCED PROTECTION**

Optimal patella protection; great for beginner players who are learning to dive correctly

**Wilson®**

**DEALER PRODUCT  
SOCCER**

MATCH BALL  
**NCAA VIVIDO**



**FUSED TECHNOLOGY**

20-panel fused construction; this hyper white material uses Visual Spin Detection to allow for better tracking with an EVA soft foam backing

**ENHANCED BALL TRACKING**

Inspired by Visual Spin Technology, this new color pattern uses high-contrast colors to optimize spin detection for easier visibility when in flight

**TOUCH & CONTROL**

Micro-Textured Cover offers better boot to ball touch and control

**VIVIDO**

Vivido translated to “vision”, which is the DNA of this ball – giving players better vision through the Visual Spin Detection

**NFHS, NCAA & FIFA  
APPROVED**

MATCH BALL  
**NCAA VEZA**



**ENHANCED STRIKING**

A unique 20-panel design optimizes geometric striking zones, allowing you to consistently hit controlled, precise strikes.

**ENHANCED BALL TRACKING**

Inspired by Visual Spin Technology, this new color pattern uses high-contrast colors to optimize spin detection for easier visibility when in flight

**ULTIMATE CONTROL**

The textured cover offers the best combination of durability and performance, providing better control with every touch.

**MOISTURE PROTECTION**

A fused panel cover construction helps minimize moisture absorption to keep the ball light and playable in all weather.

**NFHS APPROVED**



CLUB SERIES  
**NCAA VANQUISH**



**DURABLE CONSTRUCTION**

20-panel fused-panel construction, to keep moisture out and extend durability

**ENHANCED OPTICS**

Inspired by Visual Spin Technology, the high visibility, tech-graphics with color accents allowing the player to easily track the ball

**QUALITY FEEL**

Texture composite TPU cover for enhanced durability and great boot to ball feel

**MOISTURE PROTECTION**

A fused panel cover construction helps minimize moisture absorption to keep the ball light and playable in all weather.

**NFHS APPROVED**



# GAME BALL SERIES

## VIVIDO



Warm to cool gradient  
High contrast straight edges

## VEZA



Warm to cool gradient (less than Vivido)  
Medium contrast edges slightly broken

## VANQUISH



Mostly cool gradient  
Low contrast edges very broken

# REC SERIES

## NCAA VANTAGE



### **TOUCH & DURABILITY**

Synthetic leather cover offers great first touch and increased durability for endless hours of play

### **IMPROVED TOUCH**

EVA foam-lined panels create optimal energy return upon impact to improve first touch and close control when dribbling

### **VIBRANT COLOR**

Bright contrasting colors for any kind of play conditions

**Size 5 / 4 / 3**

# REC SERIES **PENTAGON**



## **CLASSIC LOOK**

A fresh and modern twist on the traditional black & white panel design of classic soccer balls

## **TOUCH & DURABILITY**

Synthetic leather cover offers great first touch and increased durability for endless hours of play

## **STAYS INFLATED**

Butyl rubber bladder is used on the interior of the soccer ball for excellent air and shape retention

**Size 5 / 4 / 3**





official dealer - distributeur officiel

Contact us for **TEAM** pricing

Communiquez avec nous pour le prix d'**ÉQUIPE**

**info@vsp.net**